

Descendants of
Ebenezer Luther (1797 - 1867)
and
Aurilla Mariette Wait (1801? - 1880)

Third Edition

*Kem Luther
4542 Rocky Point Road
Victoria, BC V9C 4E4
(250) 595-2474
kem.luther@gmail.com*

© Kem Luther, 2024

Contents

Preface to Third Edition	5
Acknowledgments	7
Introduction	9
First Generation	12
Second Generation	23
Third Generation	48
Fourth Generation.....	109

Preface to Third Edition

Genealogy has changed.

When I began to work on genealogical topics in the late 1980s, chasing down ancestors required constant correspondence, visiting county and state archives, and scrolling through miles of microfilm. We used the new personal computers, but only as tools to manage our local collections of ancestral data (remember Roots III?). Spreading the news about our research meant creating monographs and family studies. We deposited these papers in research libraries and sent them to other researchers. Sometimes we made them into books to gift and sell to family members.

With the internet became a thing in the 1990s, data repositories began to move online. At first, these online resources only supplemented traditional methods of genealogical research. Sometime in the early years of the new millennium, however, our own records began to migrate into the cloud. As this happened, the demand for printed volumes dropped. I experienced this change with my genealogy of the Ebenezer Luther and Aurilla Wait Luther family. I had created a spiral-bound book of my data and printed up copies. I would get regular requests for this book. Over the years, perhaps a hundred of these books were shipped out. Gradually, though, requests for the book stopped coming in. People began to ask about digital copies. I set up a web repository for my genealogical papers (now at <https://kemluther.com/notbooks/genealogy/>) and turned my research monographs into PDF files that could be downloaded.

In the last decade, it has become apparent that most people working on the histories of their families no longer think of these research monographs—publishing them and acquiring them—as the common coin of genealogy. They turn instead to the many online hosts of genealogical information, sites such as Ancestry, MyHeritage, FindmyPast, Geni, RootsWeb, and Findagrave. These sites allow them both to access primary data *and* organize their family trees.

For those of us who grew up with the old way of doing genealogy, adapting to these changes means moving the results of our research online. And not just in the form of digital copies of paper-based research. People want the data in a form that they can integrate with their own online research. Whether I will get around to doing this with all my genealogical studies is questionable. As I write this, I'm in my late seventies, and this hobby can make demands on only a small part of my diminishing time and energy. I thought, though, that I should at least make some small start. Out of the several families I have researched, I decided make my beachhead on this new continent with the Ebenezer Luther data.

I picked two places to transfer this research. On my public tree at Ancestry (<https://www.ancestry.ca/family-tree/tree/167514184/family?cfpid=362173180233>), you can find references to the online versions of the sources that I tapped into when I did my research on this family. Ancestry, though, lies behind a paywall, so I decided to provide access to the research through the crowdsourced and free WikiTree. The starting point for the WikiTree version of the research is the Ebenezer Luther entry. You can find it at <https://www.wikitree.com/wiki/Luther-2719>.

Moving the research data over to online portals encouraged me to rethink this print version. I have revised this monograph in four major ways. First, I corrected a problem in *coverage*. Although I called this study “Descendants of Ebenezer Luther (1797-1867) and Aurilla Mariette Wait (1801?-1880),” the title was not completely honest. I really only covered in detail the descendants that came through the son Henry Lousern Luther and the Luther siblings of Henry that immigrated to Nebraska. This problem is now fixed. I have provided on these pages a comprehensive look at *all* of the known children and grandchildren of Ebenezer and Aurilla, as well as synopses of the great-grandchildren. When you include the spouses and the parents of spouses of the descendants, this amounts to about 500 people. Ebenezer and Aurilla, I estimate, have about 3000 living descendants in 2024.

Second, I have restricted the *scope* of the study. I began my work by taking over a huge listing of family names and dates that had been maintained, over a period of perhaps 50 years, by family historians. My initial thought had been to make most of their data available to other researchers. I was able to accomplish this when my delivery vehicle was a privately published paper. Putting all of this data on the web, however, raised privacy issues. I decided to cut back on the coverage in this monograph. It now reviews only four generations, from Ebenezer and Aurilla down to their great grandchildren, all of whom are now dead. Most of the fifth generation (to which I belong) has now passed, but it seemed easier to omit this generation entirely than figure out who is and isn’t alive.

Third, I have changed the *level of documentation*. Over the years I added footnote after footnote to this monograph in order to supply links to sources. Since these sources and links can now be found in the Ancestry and WikiTree versions, I have removed many of the sourcing footnotes. Researchers who want to chase down my sources can do this—and will probably prefer to do this—in the web-based versions of the data. Taking the emphasis off of the sources has allowed me to rewrite the summaries with a focus on telling the story of the ancestors in this book rather than on how the story was put together.

Fourth, I have *dropped the index*. Chances are that anyone reading this is doing it on a digital copy. To find names, most people with digital copies use electronic searches rather than printed indices.

Acknowledgments

This genealogy would have been impossible without the help of others in the Ebenezer Luther line who have shared their time and efforts. The bulk of the standard genealogical data, although it derives from several sources, owes its preservation to the work of Helen Moody (née Helen McGill⁵, Emma Marie⁴, George Austin³, Henry Lousern², Ebenezer¹). She dedicated a good part of her adult life to the assembly of accurate and complete information about the Henry Luther branch of the family, extending the work started by her great-aunt, Bertha Calhoon. For many years, Helen's forty-page, double-spaced typescript copy of the family history has been the main source of information for persons wanting to know the facts of kith and kin. Much of the information was collected in the Luther Picnics that she helped to organize in the 1950s and 1960s. The details on these pages about parents,



One of the many Luther picnics in North Platte, Nebraska. Taken in the mid 1950s.

children, births, marriages, and deaths, especially in the third through the fifth generation, is in large part derived from both her typescript copy and from several hundred family group sheets that she sent to me in the spring of 1989.

Other correspondents who have made special contributions to extending the coverage of this genealogy are Carl McQuiety (Katie Jane³, Henry Lousern², Ebenezer¹), Wilbur Brown (Elmer O. Brown⁴, Franklin Walter³, Mary Ann², Ebenezer¹), F. Erma Fortner (née Erma Wilkins⁵, Elva Lula⁴, Franklin Walter³, Mary Ann², Ebenezer¹), Elva Gertrude Spiker (née Elva Kerr⁵, Elsie Mae⁴, Franklin Walter³, Mary Ann², Ebenezer¹), Clarisse Floyd

(married to the birth son of Betty Jean Hudspeth⁵, descending from Elnora Mae Barclay⁴, Ida Alice³, Henry Lousern², Ebenezer¹) and Roger Luther (Charles “Chuck” Henry⁴, Albert Henry³, Henry Lousern², Ebenezer¹).

Introduction

The work in hand blends of a pair of contributions to the understanding of the genealogical heritage of the Ebenezer Luther family. One part of it is a large body of documentary research; the other is a multigenerational assemblage of family data. The first of these two parts, my own research into Ebenezer and Aurilla's family, attempts to reconstruct, through official documents, the immigrations of this branch of the family from their Northeastern US homelands into the western states. It focuses on Ebenezer Luther, his wife Aurilla, and their immediate children. My work on the upper lines of the Ebenezer Luther line took place during a six-year period of intense research (1987-93). It has been followed by two decades of casual correction and expansion. The story of my search for Ebenezer and Aurilla Luther is recounted the book *Cottonwood Roots*. The first edition was published in 1993 by the University of Nebraska Press, and a second edition was reissued through Amazon Kindle. It is available at:

<https://www.amazon.ca/Cottonwood-Roots-Kem-Luther/dp/B08DSYSS9F>

The second contribution is a compilation of the known descendants of Ebenezer and Aurilla Luther. The original work of assembling the genealogical data on the family of Ebenezer and Aurilla (Wait) Luther was carried out by Bertha Calhoon (1882-1956, née Bertha Luther, Henry Lousern², Ebenezer¹). She wrote down all that was known about dates and places, and recorded the family stories that had survived. She laboriously copied this out by hand and sent it around to family members. Here is how she describes her work in a 1955 letter:¹

“About the family record. We have a good one, and reliable, taken from my mother's family Bible and from Walter Brown's 3 Bibles, his mother's, his 2 aunts', and his own. [My husband] Allie and I wrote letters and worked hard on it. We sent a copy to each one of my brothers and sisters and asked them to see



Bertha Calhoon in the 1930s

¹Letter to O. K. and Billie Luther.

that each of their children got a copy from them. Some appreciated it, some didn't seem to. We sent one to Emma to represent George's family. She made a copy for all her brothers and sisters and each of her own children and kept adding later additions of births and marriages. Pattie still had hers but never even showed it to her children. Pearl kept hers but I don't know if she shared it. Mary and Violet had theirs but they never shared it or added any to it. Leon and Ida--I don't know what they did. Cora was gone so we sent it to Irene. She made a copy for each of her brothers and sisters and has added to it also. Katie kept hers. I don't know about Walter's—it was about the time he passed away that we sent it around.... We never had them printed. I think we should have. Valery's husband typewrote my copy in a booklet, but I have scribbled in it so many births, marriages and deaths since that some of it is a mixup."

There was, at one point, what might be called an official copy of the Luther genealogical data: the one prepared by Bertha Calhoon. After that there were multiple copies and no single version had all the information. The letter just quoted shows how the various lines of transmission originated. Eventually a new official copy emerged from the chaos: the one in the possession of Helen Moody, recorded on family group sheets and as a typescript narrative. During the period of chaos, two attempts were made to publish some of the information about Ebenezer Luther's line as a genealogical narrative. One attempt was a fifteen-page, double-spaced, typed summary of family history that was executed by Pearl Baldwin. It uses Bertha Calhoon's information for the early family history and adds dates relating to Jesse Andrew Luther's family. In preparing the data for this publication, I deferred to the Baldwin information only for the data on Jesse Andrew Luther's line. For all other lines, I gave priority to the Helen Moody group sheets. The second attempt at publication was single-spaced, typed history from Roger Luther that includes several family photographs. His history uses Bertha Calhoon's information as a starting point for data on Ebenezer and Henry's family, but adds extra historical information and numerous anecdotes about his father and his grandfather. It also contains some original research that Roger did at Friend, Nebraska, and Warren County, Illinois. The biographical information on Albert Luther in this genealogy, and a few names and dates from Albert's line, comes from his narrative. Unless the source of the information is explicitly cited in this genealogy, it may be assumed to come from one of the four family sources described above (Helen Moody family group pages and the genealogies by Bertha Calhoon, Pearl Baldwin, and Roger Luther).

The NGSQ Register Plan Format has been used for the general format of the genealogical information. Each entry with a separate Arabic number represents both a marriage and a family. If a child in a family became a source for a new entry (i.e., the child married and produced children), then only the name is given in the list of children and an Arabic numeral to the left of the entry points to the entry in the next generation with that person's full information. If the child did not marry, or married and had no children, the full entry is present at the spot where the person is mentioned in his/her parent's family entry.

My own research work has been interleaved with the individual Register Plan entries in the first three generations. I have placed my comments in a sans-serif font to set it off from the standard format.

First Generation

1. Ebenezer¹ **Luther**. Born 3 Mar 1797 in New York. Died 4 Oct 1867 in Illinois.

The family histories kept by the descendants of Ebenezer and Aurilla Wait Luther have little to say about the ancestries of the couple. One tradition says that Ebenezer was of “Dutch and English parentage.” Aurilla in the received histories is said to be “a native of New York State.”

Where memories fail, records can pick up the story. In this case, however, the presence of Ebenezer and Aurilla in genealogical records falters at the same point that memories do. While we can sift through records and connect Aurilla to continuous lines of New England Waits, the immediate forebears of Ebenezer remain a mystery.

The mystery adheres only to Ebenezer’s parents and grandparents. The more distant ancestors of Ebenezer are known. New England Luthers in the seventeenth and eighteenth centuries almost all descend from an English² Captain John Luther who came to North America with the Puritans about 1637. The story of Captain John and his descendants is chronicled in the *Luther Family in America (LFIA)* by Leslie Luther and George A. Luther. The *LFIA* volume documents five thousand descendants who were born mostly between 1600 and 1850. In the early periods they resided in Massachusetts and Connecticut, but after the Revolutionary War, large groups of them spread west, many by way of Western New York.

² The story in the family that Ebenezer was of “Dutch and English parentage” (“Dutch” was often a term in the last century for “German”) does not necessarily point at one of the Luther lines, described in the next footnote, that came from Germany. The German line could be Ebenezer’s mother line. Or the German connection may simply reflect the long-standing belief held by persons in John Luther’s *LFIA* line that there were German origins somewhere in the distant past—a belief that now appears, based on DNA data, to have no foundation.

The *LFIA*, published in 2001, did not have much information on where Captain John Luther came from. The birth family of Captain John Luther was finally uncovered in 2020 by Larry Calvin Luther. John Jr. appears to be the son of John Sr. and Johan (Johanna, Joan) Northover Luter, who were married in Bridport, England, about 1600 and who had 8 children, Captain John being the oldest. Captain John married Elizabeth Addams in England in 1625 and they had 5 children. Only the youngest, Samuel (b. 1637) appears to have travelled to New England with his parents.

Even before the era of genetic genealogy, it was clear that Ebenezer belonged to the Luthers of the *LFIA*. His name and location both pointed in this direction. The name “Ebenezer” was widely used in this family—in one case, there were four successive generations with sons bearing that name. In addition, all of the upstate New York Luthers in



Ebenezer Luther's grave in McDonough County, Illinois

the decades after the Revolutionary War belonged to this group. The assumption based on name and location became a certainty when a large number of these Luthers claiming descent from Captain John joined a Y-chromosome project for Luthers at Family Tree DNA. Luthers with direct and documented male lines back to Ebenezer turned out to have a shared signature in their Y chromosome that could only have come from John Luther. The male DNA in Ebenezer's line, it turned out, matched male DNA sequences in Captain John Luther's line. This genetic connection was later supported by autosomal DNA studies. With any luck, further DNA testing among Captain John's descendants will allow Ebenezer's place within the *Luther Family in America* tree to be more closely determined. DNA studies tentatively point to

Ebenezer being a descendant of Captain John Luther through his son Samuel Luther Sr and grandson Samuel Luther Jr.³

The first written records documenting Ebenezer come from upstate New York. But did Ebenezer grow up there? What records we have that relate to this question come from Ebenezer's brother, John Luther. We only know about this brother because Ebenezer, as we will see below, inherited some land John was given as benefit from his service in the War of 1812.

According to John Luther's pension records, he was born in Massachusetts, but according to his enlistment papers records, he came from Norwich, Chenango County, New York. John enlisted in Captain Greenwood's 16th Infantry on 15 July 1812 at Norwich, New York. He was only 19 when he was discharged in 1814/1815, so he would have been born about 1795. Since Ebenezer was born in 1797, John would have been Ebenezer's older

³ See the attempts to use DNA testing to resolve Ebenezer's place within the Captain John Luther line in the study "The Search for Ebenezer Luther's Ancestral Lines" published at <https://kemmluther.com/notbooks/genealogy/>.

brother. John, say the enlistment papers, had dark hair, dark eyes, dark complexion, and was five feet eleven inches tall. His profession is described on his pension papers as “farmer.” On 21 November 1814, the surgeon of the regiment gave John a medical discharge because he had been wounded at Fort George on 24 August 1813. John was ultimately granted a pension on the basis of these undescribed injuries. The pension started, records show, in 1814.⁴ John was discharged at a camp near Buffalo, New York. For a few years he lived in Erie County, New York.⁵ His bounty land papers were sent to Clarence, New York, which is part of Erie County. John continued to draw his pension in New York until 1817. The pension was then transferred to Detroit, Michigan Territory. In 1824, John moved to Lafayette Parish in Louisiana because he “apprehended he was falling into consumption” and his pension was transferred to Louisiana. The pension papers show that he continued to draw the pension in Louisiana through 1838 and that he was then transferred to the District of Columbia. He appears in the 1840 Federal Census of the District. DC pension records say that he died on 20 December 1842. Chances are, if he did not have any heirs other than Ebenezer, that John did not marry or have children.

We might assume, then, that John and Ebenezer’s parents came from Massachusetts, and that they probably moved to Norwich, New York, when the boys were fairly young, perhaps even before Ebenezer was born in 1797, since Ebenezer claims to have been born in New York. In 2016, the Chenango County Historian did a search of the available Chenango records and found no evidence of John Luther’s presence there. Records do, however, indicate that other Luthers lived there. Two Luther families show up in Chenango County in the first couple of decades of the 19th century. These two families seem to have arrived there on or after 1806-1815, which makes them a little too late to be a source family for Ebenezer and John. There were, however, Luthers who arrived earlier. A Reuben Luther was assessed for Chenango taxes in 1799 and 1800. A Pauline Luther, who was born in 1805, died in 1821, and was buried in the North Norwich Cemetery, was listed as the daughter of a James and Polly Luther.

⁴ Pension information based on U. S Revolutionary War Pensioners, 1801-1815, 1818-1872, accessed through Ancestry.com. Also the National Archive’s Pension Application Files, War of 1812, Death or Disability” and United States Revolutionary War Pension Payment Ledgers, 1818-1872. He drew \$5.33 a month from 1814 to 1825, then \$4.00 a month from 1825 to 1838, when it was restored to \$5.33 a month. The District of Columbia records indicate a payment of \$8.00 a month at the end of his life.

⁵ There is a reference, in the index to the Erie County, New York, records, to a judgement in a case involving John Luther and Gilman Folsom. Folsom was a butcher in Buffalo. The county court convened in his house in 1816. However, the records of the actual case seem to be missing from the case files.

At some point, perhaps when the boys were in their teens, the family may have moved from Chenango County to Ontario County, New York, and settled in the area that would become Livingston County. A teenaged John may either have stayed on in Chenango, ultimately enlisting there when he was 17, while his parents and brother Ebenezer moved on to the area around Lima, New York. Or John may have moved with them and returned to Chenango to enlist in 1812. The move west was a popular one in the early 1800s--in the 40 years after Western New York was opened up for settlement in 1790, nearly a million people moved in and through the region. Turnpikes were built to facilitate travel. Moving 150 miles from Chenango County to Livingston County might have taken the family only a few days.

Ebenezer Luther married Aurilla Mariette **Wait**, in the 1820s. Born 10 Apr 1801 (?) in New York. Died 28 May 1880 in Saline County, Nebraska.

Aurilla's maiden name was "Wait." She was part of an extended family of Waits who came from Lyme, Connecticut, to the Genesee country of central New York about 1800.⁶ One of the Connecticut Waits who made the trip to New York was named Loen (or Lorin/Loren). Loen had a son Martin, born about 1775, who came to the Genesee with him. Martin married Sarah Bailey and they had a large family. By putting together census, land and will records the following children can be identified: Thomas, Lorin, David, Rachel, Nathaniel, Joseph, possibly Martin Jr, a daughter who married a Phelps, and one unknown daughter born in the 1800/1804 period. This latter daughter, though not named in any records, would have been Aurilla. Autosomal DNA matches between her descendants and descendants of the other children of Martin and Sarah add to the certainty that this is her family.

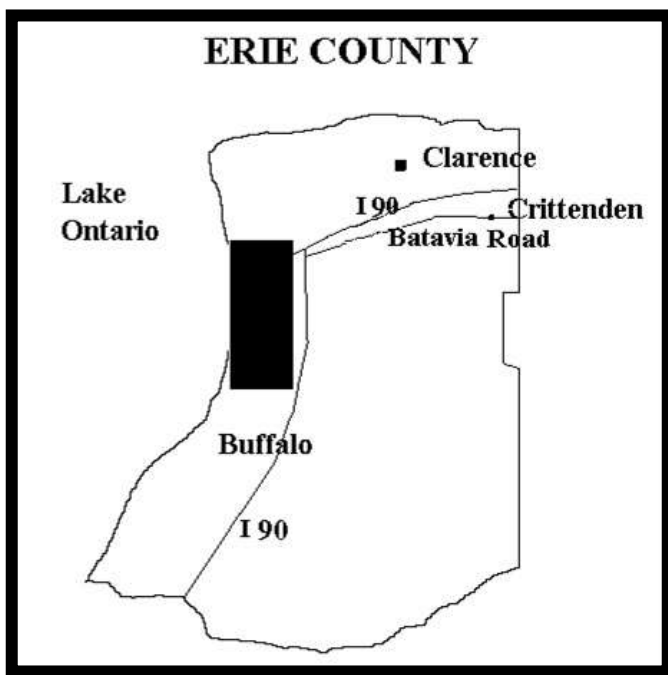
Loen, Martin, and their families settled near Lima, New York, in what is now Livingston County. Loen died about 1825. In the early 1830s, Martin, Sarah, and their children (many of them now adults) began to sell their land around Lima and in the late 1830s started purchasing land around Alden and Newstead Townships in Erie County. These Waits lived in Erie County for more than 20 years. After 1859, they began to sell their lands. Some of Martin Wait's family moved to Illinois and Michigan.

Aurilla would have been born and raised in Livingston County, and Ebenezer probably met her there. The couple would have married in the 1820s—their first child was born in 1829. (Although the marriage is documented in genealogical collections, it is not clear

⁶ Further discussion of this family can be found in my genealogical summary "Ancestry of Aurilla Mariette Wait (1801?-1880)."

whether this citation comes from an actual record produced at the time or whether this was a later inference from subsequent records.) Our first chance to see them as a married couple would have been the 1830 census, but Ebenezer is not recorded there as head of a household. Ebenezer and Aurilla may have been living in with Aurilla's father. The ages of people in Martin and Sarah's 1830 Livingston County census entry suggest this.

But what became of Ebenezer and John's parents in the years when John was fighting in the War of 1812 and recovering from his wound and Ebenezer was starting his family with Aurilla? The only known reference to a Luther in the immediate vicinity of Lima, Livingston County, in the relevant years is a newspaper reference to a "Mrs. Sarah Luther" of Lima marrying, early in 1810, a Thomas Hereman of Avon. The way her title is given indicates that she was probably a widow. If this Sarah was Ebenezer and John's mother, then perhaps their father had died. A few months after the 1810 wedding, the newly-married couple is enumerated on the 1810 census. The census information shows that both Thomas and Sarah were born between 1765 and 1784. There is an 1820 census reference that may indicate that Thomas was a widower living with a son Thomas, so perhaps Sarah died before 1820. John Luther's departure for Michigan in 1817 may be an indication that she had died.

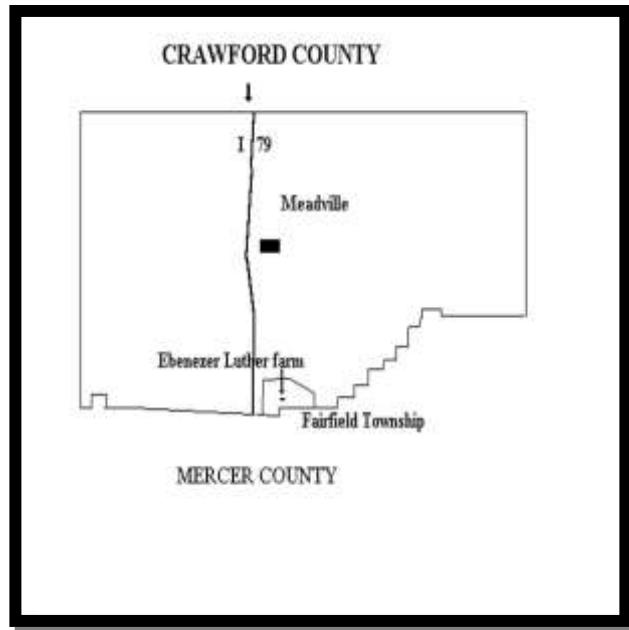


Erie County, New York

It is possible that in these two 1810 references to a Sarah Luther we have all that we will ever learn about Ebenezer's immediate family—an unnamed father and a mother named Sarah, both of whom die in the first two decades of the nineteenth century. A small point in favor of this guess is that Ebenezer called a daughter of his Sarah. (Sarah, however, was one of the three most common names in New England families of this period, so this is a *very* small point.) Counting against this guess is that John and Ebenezer, both young teens in 1810, do not appear in Sarah and Thomas's household on the census. Both of them, however, then aged 13 and 15, were old enough to have been independently employed as farm workers

on other farms, which would have made them almost invisible on the 1810 census.

The first solid sighting of Ebenezer and Aurilla happens in Erie County, New York. The 1840 federal census-takers found them living in Erie County's Alden Township. With them are the first six of their eight children, all of whom, we learn from later records, were born in New York. Alden Township is on today's Route 20, about 20 miles east of Buffalo. The place where Ebenezer's family was living was a little north of the highway, near the village of Crittenden. The census only gives the age ranges of family members, but the ages mostly correspond to what would be expected from later records of birthdates.



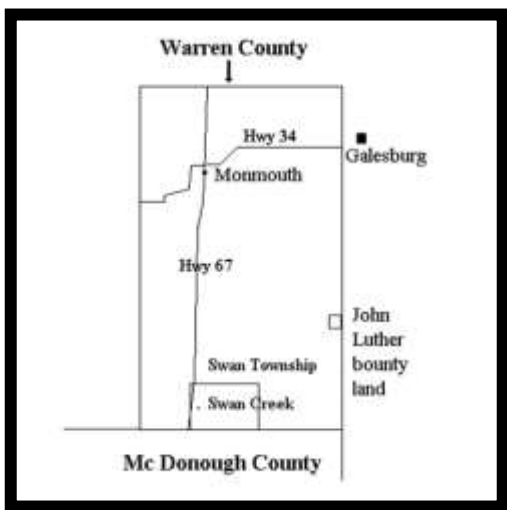
Crawford County, Pennsylvania

Though there are no land records that would allow the Alden Township family home to be pinpointed—Ebenezer does not seem to have owned the farm where his family was living—it is still possible to get an approximate idea where they were in the township by looking at the other persons enumerated on the same census page with them and looking up their associated land records. This trick fixes Ebenezer and Aurilla somewhere in the vicinity of section 15 of Alden Township. Lorin Wait Jr, Aurilla's brother, owned land in section 15, along the Batavia Road, even though he was not in the census for Alden Township. The natural assumption, then, would be that Ebenezer and Aurilla were living on Lorin's land in 1840. They may have moved to from Livingston County to Erie County in 1837, when Lorin purchased the land.

From Erie County, Ebenezer and Aurilla moved their family to Crawford County, Pennsylvania. The exact date of the move is uncertain. A date of 1847 for the move to Pennsylvania would correspond both with the sale of Lorin Wait's New York land and the first appearance of Ebenezer in the Crawford County, Pennsylvania, tax records. Family histories, however, say that their son Henry was five at the time of the move, which would point to 1842 or 1843. Their last child, Hannah, was born in Pennsylvania in 1845, suggesting the move was in that year or before. Ebenezer and Aurilla, then, may have lived in Erie County, New York, for only about six years, from 1837 to 1843.

While in Crawford County, two of Ebenezer and Aurilla's daughters married and started their own families. There are land records on file in Crawford County for Ebenezer and at least one of his children, and four of his children (but not Ebenezer and Aurilla) have been found in the 1850 Pennsylvania Federal Census. One of the Crawford County land records for Ebenezer is a deed from William Andrews to Ebenezer Luther, dated 6 September 1852 and recorded on 13 June 1855. It confers sixteen acres of land in Fairfield Township to Ebenezer for a price of \$100. The land borders on the Mercer County line. Tax lists from Fairfield Township show that Ebenezer began paying land taxes from 1847 on, so he may have been living in the area, perhaps on the piece of land he eventually owned, some eight years before he made the purchase. The land records in Pennsylvania also contain the first mention of Aurilla as the name of Ebenezer's wife.

After living in Crawford County for about 15 years, on 25 August 1859 Ebenezer and Aurilla sold the Crawford County land in preparation for a move to the West. Two of the daughters, the married Samantha and the unmarried (and probably sickly) Emily, decided to remain in Crawford County. The rest of the children, including the married Caroline and her family, made the long trip to Illinois in late 1859 or early 1860.



Warren County, Illinois

It is tempting to think that there was some connection between Ebenezer and his family choosing Warren County, Illinois, as a destination and the fact that John's bounty land was in the same county. If there is, it wasn't for the purpose of settling on John's land. The land was sold by proxy *before* Ebenezer and his family arrived, in April of 1859, while Ebenezer and Aurilla were still in Pennsylvania. On the proxy sale deed, Ebenezer describes himself as being "the only brother and heir at law" of John Luther and therefore legally qualified to sell the land that John had taken title to on 5 January 1818 as a bounty claim arising from his service in the War of 1812. John's land was in the southeast quarter of section 12, Range 1W, Township 9W, in Berwick Township. Ebenezer, when

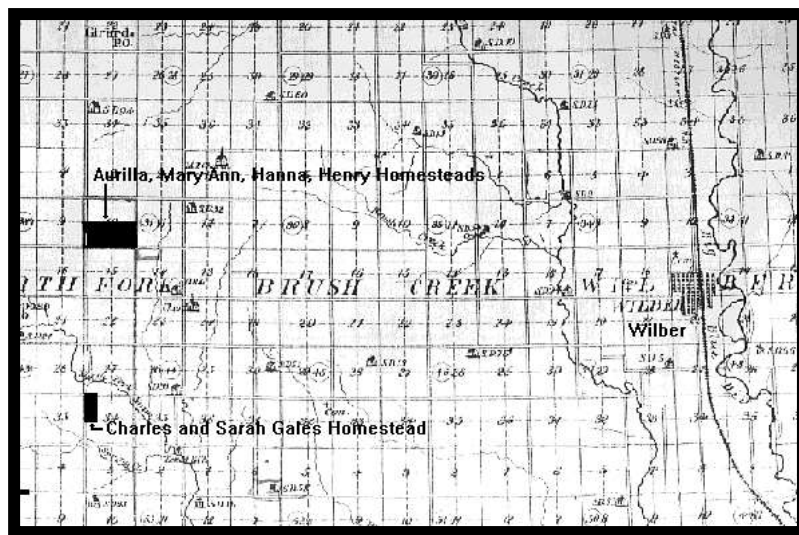
he moved to Illinois later in the year, lived on a rented farm about 10 miles away from John's bounty land. The sale of John's land seems to have provided enough funds for the family to make the move, but not enough for them to buy land to settle on.

There are several citations of Ebenezer and Aurilla in the Warren County records. They and some of their children were enumerated in the county on the 22 June 1860 federal census. Ebenezer is described in the census as a farmer with a personal estate of \$320. He was not able to read or write. Both he and Aurilla were said to have been born in New York State. They lived next to Hezekiah Simmons, the local magistrate who performed the marriages of some of Ebenezer and Aurilla's children.

Unlike Aurilla, Ebenezer did not make it to Nebraska with his children and their families. He died in 1867. His grave is in the northern part of McDonough County, Illinois, in the Camp Creek Cemetery, Section WC. The Cemetery is located five miles south of Macomb, Illinois. Ebenezer and Aurilla lived just to the north, in the neighboring Warren County.

Aurilla survived Ebenezer by more than ten years. After her husband's death, Aurilla travelled with some of her children to Kansas (1868 or 1869) and then in 1871 to Saline County, Nebraska. On the 1870 census, she is living in Brown County, Kansas, with her daughter Hannah and son-in-law Jesse James. She probably continued living with Hannah after moving to Nebraska.

In Saline County, Aurilla took out a homestead in the half-section with her children's homesteads. She sold it to Jesse James, her son-in-law, in 1880.



Part of Saline County, Nebraska, from the 1885 *Official State Atlas of Nebraska* (Philadelphia: Everts and Kirk), p. 121, with the homestead lands of Aurilla and her children marked.

Aurilla's death is recorded in the 1880 Saline County mortality schedules. Her age at death is reported as 80, but it should have been 79, if family records are correct. Both her

parents, according to the schedules, were born in New York, but his is also incorrect—her father Martin was born in Connecticut. Although Aurilla is said in the family histories to have been buried in the local cemetery with others of her family, there is currently no stone marking her exact gravesite.

Children:

2 i. Caroline.².

ii. Emily. Born 18 Feb 1830 in New York. Died Aug 1862 in Crawford County, Pennsylvania.

Emily, the family histories say, lived in Pennsylvania all of her life. She did not marry. She was born in New York.

She would have moved with parents to Pennsylvania about 1847, when she was still in her teens. In Crawford County, Pennsylvania, there is a deed dated 4 February 1858 in which Emily Luther purchases five acres in Fairfield Township from James H. Calvin. (This is probably the same James Calvin on whose farm her younger brother Henry was living in 1850—see the discussion on Henry below.) This transaction may have been her family's attempt to provide her with some resources before their move to Illinois in 1859. The year after they left, Emily is tallied in the federal census for Fairfield Township under the name "Emma Luther." She is living with an older couple, John and Jane Luper.

Emily apparently died in August 1862. Her probate is mentioned in the Crawford County Probate records. The register docket says that her brother-in-law, Byrum Webster, began to act as legal administrator of her estate on 1 September 1862 and that J.H. Calvin and a Mr. Beatty provided surety for the bond. The inventory for the estate, which is missing from the Crawford County records, was filed on 25 September 1862.

3 iii. Samantha Louise.

- iv. Sarah Ann. Born 4 Nov 1835, in New York. Died 4 Aug 1906, in Hastings, Nebraska. She married, first, Charles **Gales**, 28 Feb 1860, in Swan Creek, Warren County, Illinois. She married, second, Oliver W. **Smith**, 25 Feb 1881, in Saline County, Nebraska. She married, third, Bradley L. **Prime**, circa 1891.

Sarah Ann was born in New York. She moved to Pennsylvania with her parents as a girl, perhaps in 1847. In the 1850 Federal Census, the fourteen-year-old Sarah and her brother James were living on a farm in Mercer County, Pennsylvania, that was owned by James and Elizabeth Simpson. Ebenezer and Aurilla are not found on the 1850 census—perhaps they were traveling and left some of their children behind.

Although the family history lists no marriage for Sarah Ann before her Illinois marriage to Charles Gales, there is an 1854 marriage for a Sarah Luther to John Dunn of Sugar Grove, Pennsylvania, on 5 October 1854, that may in fact be her first marriage. If it is her marriage, however, the family kept it hidden. She is referred to as “Miss Luther” rather than “Mrs. Dunn” at her marriage to Charles Gales. (Since a reasonable doubt exists that this is the same Sarah Luther, her marriages have been numbered from the Charles Gales marriage.)

Sarah moved to Illinois with her parents when she was about 25. In Illinois she married Charles Gales, a German immigrant from Württemberg, on the same day that her brother Henry married Elizabeth Cline, possibly in a double ceremony. The wedding was performed by Hezekiah Simmons. In the 1860 census, she and her new husband (who was 26) were living on the farm of Samuel and Caroline Luton (see the discussion of Caroline Luther below for further details). Gales is listed as farm laborer with only \$20 in personal estate. Gales, the census says, was born in Germany.

Sarah and Charles ended up in Saline County, Nebraska, with her mother and most of her siblings. The couple appear not to have made the short stopover in Kansas, however—on the 1870 census they are still in Illinois. Sarah and Charles took homestead land in Saline County on 20 February 1877 in Section 34, Township 6, Range 2, about three miles from the parcels of land taken by the other Luthers.

Gales died in 1880, when Sarah was only 44. His tombstone still stands in the Saline County cemetery where the Luthers are buried. It appears that Sarah and Charles had no children. Sarah and Charles show up on the 1880 Federal Census for Saline County, living in Wilber Village, but Charles is sick with consumption. He died soon after the census, at the

age of 47. His probate record from 1882, as well as his tombstone, notes his death date as 2 August 1880. Charles's only property was the lot in Wilber.

Sarah married Oliver W. Smith on 25 February 1881, at Wilber. He was 60, born in Ohio, and she was 45. He died on 8 Nov 1906. Ten years after her second marriage, she married her third husband, Bradley L. Prime, on 29 Jun 1892. He had served under Col. Howland, Company "C" of the Ohio Regiment, Union Army. Prime was admitted to the Old Soldiers' Home in Grand Island, Nebraska, a few months later, on October 12, 1892, from Wilber, in Saline County.

Sarah lived alone in Wilber for about 3 years. On 2 December 1895, Sarah was admitted to the County Home in Milford, Nebraska. On 8 June 1900 Sarah was moved to the Old Soldiers' Home in Milford, Nebraska. She only stayed there a couple of months before being transferred to the Old Soldiers' Home in Grand Island. It was not a reunion with her third husband, however—Bradley Prime had died on 2 January 1899 and Sarah was admitted on 27 June 1900. On 25 April 1902, Sarah was discharged from the home and transferred to the Lincoln Asylum, now called the Lincoln Regional Center. Sarah remained at the Lincoln Asylum for about 18 months. On 20 November 1903 she was sent to the Hospital for the Insane at Hastings, now called the Hastings Regional Center. Sarah is reported to have died there on 4 August 1906 of dysentery and to have been buried in the hospital cemetery. She was diagnosed as having "melancholia," an old term for depression.

- 4 v. Henry Lousern.
- 5 vi. James.
- 6 vii. Mary Ann.
- 7 viii. Hannah L.

Second Generation

2 Caroline² **Luther** (Ebenezer¹). Born 15 Apr 1828/9 in New York. Died about 1864 in Illinois.

The oldest daughter of Ebenezer and Aurilla, Caroline, has been the most difficult child of Ebenezer and Aurilla to track down. The difficulty stems, in part, from small misdirections in the family histories. Caroline married, they say, but the name of her husband—and only the last name is given—is not clear. It looks like “Lupor” in Bertha Calhoon’s handwritten version and is spelled “Luper” and “Lufer” in other versions of the history. Caroline, the histories go on to say, was born in 1824, “had two children” and “married and remained in the state of Illinois.”

Some of this is true, but not all of it. The starting place to find real documentary evidence of what happened to Caroline is 1860 census of Warren County, Illinois. The 1830 census entry for Ebenezer, if it existed—he appears to have been missed in the census—might have given some hint that Caroline had been born. The 1840 census, which did include him, tells us that Ebenezer and Aurilla’s oldest daughter was born in the 1826-1830 period. Caroline, like her parents, appears to be absent from the 1850 census. But in 1860 we hit the genealogical jackpot. A Caroline and Samuel Luton and children are recorded in the same township, Swan Township of Warren County, Illinois, where the Luthers were living.

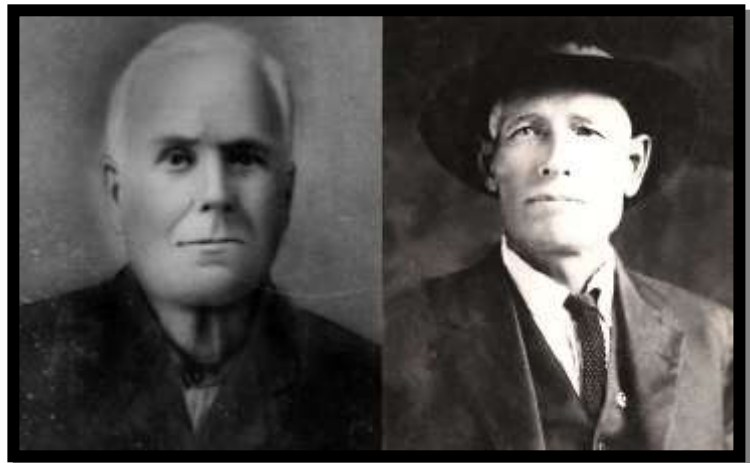
While no piece of documentation tells us explicitly that this Caroline Luton is Caroline Luther, the circumstantial evidence is compelling. Here are the lines of evidence:

- (1) The family history, confused about the name of Caroline’s husband, agree that Caroline married a man with a two-syllable name that begins with “Lu-.” Luton fits.
- (2) In the same household with Caroline and Samuel Luton in the 1860 census are Sarah A. Gales and Charles Gales. This would be Caroline’s sister, Sarah Ann, and Caroline’s brother-in-law. Sarah had married Charles Gales in February of 1860.
- (3) The Caroline Luton on the 1860 census is the right age (born in 1828-29) and from the right place (New York). The family histories say that she was born in 1824, but this appears to be an error. The 1840 census suggests a later birth date for the oldest daughter, and the family birth sequence (the next child was born in 1830) also hints at a later date. The handwritten numbers four and nine, we might note, are easily interchanged.

- (4) Samuel Luton, says the census, is from Pennsylvania. Evidence suggests that he is from Mercer County, Pennsylvania, and from a place that less than a mile from the Crawford County farm where Ebenezer and Aurilla lived. This provides a plausible context for Samuel Luton meeting Caroline Luther. If Ebenezer arrived in Crawford County in 1845 with a sixteen-year-old daughter in tow, she and Samuel could have married in early 1846 and the first of their children born later that year.
- (5) The Caroline and Samuel in the 1860 census have children, just as the family histories say. They have more than the two mentioned in the histories, however. The 1860 census knows of five children, and Luton family histories say there were seven. I suspect that the confusion lies in the two that were born in Illinois after the other Luthers left for Kansas. What the family histories perhaps meant to report was that Caroline “had two *more* children.”

- (6) The youngest child of Caroline on the census, David Ebenezer Luton, has been given the unusual name of Caroline’s father.

- (7) A picture of David Ebenezer Luton shows a distinct resemblance to the pictures of his uncle, Henry Luther.



Henry Luther (left) and David Ebenezer Luton

- (8) Caroline, as we will see in a moment, appears to have died about 1864, while the Luthers were still in Illinois. It is curious that the Luther family traditions did not record this explicitly, but it does explain why Caroline and Samuel, having followed the Luthers to Illinois, did not continue on to Kansas and Nebraska. And also why the Luther family failed to keep in touch with Caroline and her family.
- (9) Ancestry DNA tests show that descendants of Ebenezer Luther (the author, in particular) are related to living descendants of Caroline Luton at 4th cousin level. There are no other shared ancestry lines that could account for the genetic connection with the Luton cousins except the Luther line.

Caroline married Samuel **Luton**, circa 1846, probably in Mercer or Crawford County, Pennsylvania. Born circa 1826, in Pennsylvania. Died 7 Aug 1883 in Topeka, Kansas.
Children:

On the 1850 census for Crawford County, Pennsylvania, the family of the 9-year-old Elizabeth Cline, who would later marry Caroline's brother Henry Luther, was living next to a different Samuel Luton (b. 1822 in Pennsylvania, married an Agnes). Elizabeth's father Abraham, listed as a "laborer," may in fact have worked for this Luton. If this Luton is somehow related to Caroline's husband Samuel Luton, this may explain how the Lutons, Luthers, and the Clines came to know each other.

Samuel Luton, Caroline's husband, served in the Civil War. He was registered in the 8th Illinois Cavalry, the same group that James Luther served with. Samuel served from 4 Nov 1861 to 18 Sep 1862 and was discharged with a disability.⁷ Samuel married Mary Carter (born Mary Lane, daughter of Eliphalet Gilman Lane and Betsey Berry), a widow in her early thirties, on 18 December 1865, in Vinton, Iowa, a town about 150 miles from where he and Caroline had lived in Warren County, Illinois. Mary had two children under six at the time of this marriage: Sarah Carter (born 1859) and Rufus Carter (born 1860). Samuel and Mary had one child together, Lettie/Lily Mae (born 1871). The Lutons were in Lawrence, Kansas, in 1868 (where Samuel was a teamster) and in Ottawa, Kansas, in 1880 (where Samuel had resumed farming). Samuel died in 1883 and Mary Lane Carter Luton died 7 Nov 1909 in Holland, Michigan.

We don't know what happened to Caroline after the 1860 census. The most likely scenario is that she died, possibly in 1864, at or around the birth of her last child. Samuel's second wife assumed the mothering role for at least the two youngest children—the 1870 census for Osage County, Kansas, shows a blended family living on a farm, with James Ezra (age 10) and Eva (age 6) living with Samuel and Mary and Mary's daughter Sarah.⁸

- i. Joseph W.³ Born circa 1846, in Mercer County, Pennsylvania

⁷ A Luton researcher, Robert Eales, sent to me a summary of Samuel Luton with a quotation from Samuel's discharge papers: "While in service and in line of duty at Camp California near Alexandria, Virginia, in December 1861, from severe hardships and exposures to which he was subjected diarrhea was super induced and brought on and continued and became chronic. Also, near Washington D.C. on or about November 1861 while on drill, his horse slipped in a hole and fell and in fallings badly crippled him in the shoulders, arms, and legs, and otherwise badly injuring him."

⁸ The youngest child of Samuel and Caroline, Eva, appears to be on the 1880 census. The fifteen-year old "Eva Lutton" is listed as a stepdaughter (a loose term in the nineteenth century) in the family of an L. B. and Martha Richardson of Keokuk, Iowa. The second youngest, James Ezra Luton, is also on the 1880 census, newly married to an Ann E. from New Jersey. The newly married Henry F. is on the 1870 census for Iowa's Keokuk County.

Joseph appears on the 1860 census for Swan Township, Warren, Illinois, with his parents and siblings. He is 14 years old. At some point in the Civil War, which began the next year, Joseph enrolled in the 58th Regiment of the Illinois Infantry. After this, Joseph disappears from the records. Perhaps he died in the war or soon after?

- 8 ii. Henry F.
- iii. Rebecca A. Born circa 1853, in Mercer County, Pennsylvania.

Rebecca A. Luton appears on the 1860 census for Swan Township, Warren, Illinois, with her parents and siblings. She is 7 years old. After this, Rebecca disappears from the records. Perhaps she died young?

- iv. John J. Born circa 1855, in Mercer County, Pennsylvania

John J. Luton appears on the 1860 census for Swan Township, Warren, Illinois, with his parents and siblings. He is 5 years old. After this, John disappears from the records. Perhaps he died young?

- 9 iii. David Ebenezer.
- 10 vi. James Ezra.
- vii. Eva. Born circa 1864, in Warren County, Illinois. Eva married, first, Charles H. **Rockey**, son of James A. **Rockey** and Margaretta Elizabeth **Hoen/Hohn**, on 10 June 1889 in Jackson, Missouri. Born 1865. Died 25 Sep 1895 in Kansas City, Missouri. Eva married, second, Wilson T. **Jones** on 29 Oct 1900 in Jackson, Missouri. Born 1868. Died 1909.

Eva Esther Luton was born in 1864 in Warren, Illinois. She was last child of Samuel Luton and Caroline Luther. Possibly Caroline died at or near the time of Eva's birth. The first place Eva appears on an official record is the 1870 census. The six-year-old Eva is living in Osage City, Osage County, Kansas, with her father, stepmother, older brother, and older stepsister.⁹

⁹ Eva may have been doubly enumerated on the 1870 census. We find a five-year old Eva in the family of L.B. and Martha Richardson in the 1870 English River, Keokuk, Iowa census. Eva is not listed with a last name in this census, and her birthplace is wrong, but we can see that this is probably her by the 1880 census, where Eve is enumerated in the same family but this time given the last name "Lutton" and said to be a "stepdaughter." The two enumerations were 3 weeks apart (July 2 in Kansas, July 21 in Iowa). The two locations about over 300 miles apart, but they were linked by the US rail system in the 1870s, so it is possible that Eva traveled between Kansas and Iowa in the summer of 1870.

The indication that Eva is a "stepdaughter" to the head of the household is interesting. The term "stepdaughter" could be used quite loosely, but if literally applied, it would indicate that Eva had a blood relationship to Martha Richardson that she did not have to L.B. Richardson. Lucien B. Richardson, we learn

The next place we see Eva is nine years later, at her first marriage. The marriage ended in 1895, when a tragic accident took the life of Charles. The *Kansas City Daily Journal* (Vol XXXVIII, No 106, p3, c2, Thur 26 Sep 1895) describes his death: "Charles Rockey, of No 155 ½ North Second street, Kansas City, Kansas, boarded a Metropolitan cable train opposite the Union depot yesterday forenoon to ride uptown. He sat on the side next to the parallel track. Before the train had gone fifty yards, a baggage wagon ran over a dog and attracted the attention of the passengers on the cable train. Rockey was hanging to the side of the car he was on and was looking down the street when a westbound cable train struck him on the back of the head, knocking him from the car and fracturing his skull at the base of the brain. He was picked up unconscious and bleeding. Dr. Morrow, the cable road's surgeon, was called, but the police ambulance arrived at about the same time and the injured man was taken to the All Saints' Hospital, where he died at 3 o'clock. Rockey was a trackman in the employ of the Metropolitan Street Railway Company" (spelling and punctuation corrected).

Eva was listed in a directory in 1899 in Kansas City, Missouri, United States. Eva died in 1909. She is buried in Blue Springs Cemetery, Blue Springs, Jackson County, Missouri, and her stone has a death date of 1909. She appears to have had no children.

from other records, had an earlier marriage. Martha was a later wife. On the index for Iowa marriages that shows Lucien and Martha marrying on 6 Oct 1868, her name is given as "Martha Sutton." A script capital "L," however, is frequently misread as capital "S"—she could have been "Martha Lutton" and related somehow to Samuel and Caroline Luton. And close enough to them socially for them to take in their motherless daughter. All this, however, is speculative. For now, it is perhaps best to assume that only the Eva in the family of her father and stepmother in 1870 Kansas is the daughter of Caroline Luther Luton.

3 Samantha Louise² **Luther** (Ebenezer¹). Born 28 Feb 1833 in New York.

Samantha Luther was the third child of Ebenezer Luther and Aurilla Mariette Wait. She was born in New York State. Her birth overlaps with the period when her parents were living in Alden Township of Erie County, near the village of Crittenden, so this is probably where she was born, though no documents prove it.

Samantha would have been in her teens when the family moved to Fairfield Township, Crawford County, Pennsylvania. In her mid-twenties, Samantha married Byrum Webster. He was 32 years older than she was, and he had already raised a family of four in the years between 1825 and 1841.

She married Byrum **Webster** in 1856 in Fairfield Township, Crawford County, Pennsylvania. Born 2 Aug 1802 in Cuba, Cuba Township, Allegany County, New York. Children:

- 11 i. Asher³.
- ii. Sarah Jane. Born 17 May 1860 in Fairfield Township, Crawford County, Pennsylvania. Died Jul 1862 in Fairfield Township, Crawford County, Pennsylvania.
- 12 iii. Henry Byrum.
- 13 iv. Mary Jane.
- v. Hannah Louise. Born 13 Jan 1867 in Pennsylvania. Died 27 May 1951 in Saegertown, Crawford County, Pennsylvania. She married, first, Rueben H. **Swogger**, son of William **Swogger** and Eliza Jane **Mitchell**, on 22 Dec 1887, and divorced after 1910. Born 12 Feb 1858 in Mercer County, Pennsylvania. Died 28 Dec 1943 in Fairfield Township, Crawford County, Pennsylvania. She married, second, George Washington **Peterson**, son of Lewis K. **Peterson** and Sabina **Williams**, on 3 Apr 1916. She married, third, **Charles Keene**, son of Walter **Keene** and Elizabeth (Lizzie) **Lewis**, after 1940. Born 24 May 1885. Died 12 Mar 1943 in Meadville, Crawford County, Pennsylvania.
- 14 vi. Clarissa Aurora.

The question of when and where Byrum and Samantha married is not easy to answer. The LDS IGI at one time recorded the marriage as happening on 13 Feb 1859 in Chautauqua County, New York, the place where Byrum had been living during his first marriage. This datum has been picked up by many researchers, but it may be incorrect. Samantha gave birth to her first child, Asher Webster, in 1857, two years before this date. And we are not

certain when Byrum Webster's first wife, Hulda Ann Berry, died,¹⁰ and where Samantha met Byrum. It is easier, however, to think of Byrum and Samantha hooking up if Byrum and Hulda Ann had moved from Chautauqua County, New York (the place where the couple had married in the 1820s and had lived until at least until 1850) to Crawford County, Pennsylvania (where Samantha lived). Two facts lead us in this direction. (1) The 1850 decade was when Byrum and Hulda's recently married third child, Lydia Webster, left Chautauqua County, New York, and moved to Fairfield Township, Crawford County, Pennsylvania. Lydia's first child, who was born in 1855, was born in Pennsylvania rather than New York. (2) Crawford County, Pennsylvania, tax lists show Byrum Webster as a landowner in Fairfield Township from 1853 on. All told, then, the most likely scenario around Samantha's first marriage seems to be that Byrum and Hulda Ann Webster moved to Crawford County, Pennsylvania, in the early 1850s and that Hulda Ann died there, perhaps around 1855. Byrum would have then married the much-younger Samantha, perhaps in 1856, since they had their first child in 1857.

On 28 Jun 1860, Byrum and Samantha are counted in the 1860 federal census for Fairfield Township, Crawford County, Pennsylvania. They are living two houses away from Byrum daughter Lydia and her family. Byrum owns \$1300 real estate and \$250 personal property. Two children, Asher and Sarah Jane, have been born.

There are land records on file in Crawford County show Byrum and Samantha buying and selling land between 1863 and 1888. In the federal census of 1870, the daughter Sarah Jane is missing—she died at age two. Children have been coming along about ever two or three years. On the 1880 census, the 23-year-old Asher is listed as head of the house. Byrum describes himself as a shoemaker. (Over the years of his life, he alternates in the census reports between “farmer” and “shoemaker.”) The daughter Mary Jane is not at home in 1880—although just 16, she had already left for Wisconsin with the family of Byron Payne, the man she would marry the next year. Presumably the 1890 census, if it had survived, would show Byrum and Samantha still alive. Byrum, however, would die the next year, in 1891. In 1892, Samantha would marry again, this time to a Rober P. Burger. How long Samantha lived after this second marriage is unknown. She has not been located on the 1900 or any later census, so she may have died in the 1890s.

¹⁰ There is a gravestone in Peterson Cemetery at Cochranon, Crawford County, Pennsylvania, near the grave of Byrum Webster, that may mark Hulda's last resting place. The gravestone is marked "H. W." It contains no legible date (if it ever had one).

4 Henry Lousern² **Luther** (Ebenezer¹). Born 4 Mar 1837 in Erie County, New York. Died 30 Mar 1911 in Custer County, Nebraska.

Henry, the fifth child and first boy born to Ebenezer and Aurilla, is the father of most of the people in this genealogy with the surname “Luther.” The family history places his birth in Erie County, New York, which corresponds well with the itinerary of his pilgrim parents in the 1830s. Their journey took them, when Henry was about eight, to the northern tier Pennsylvania. There is a probable sighting of Henry in 1850 in West Fallowfield Township, Crawford County, Pennsylvania—the 1850 Federal Census lists a 14-year old Henry Luther living on the farm of a J.R. and Sarah Calvin.

Henry’s family remained in Crawford County through the 1850s. During this time, two of his older sisters married and left home. Henry also met his future wife, Elizabeth Cline, in Crawford County, but they did not marry there. The Luthers moved in late 1859 or early 1860 to Warren County, Illinois. Elizabeth went with them, and in early 1860, he and Elizabeth were married by Hezekiah Simmons, a neighbor and the supervisor of Swan Township. On the same day Simmons united Henry’s sister, Sarah Ann, to Charles Gales, so it may have been a double wedding.

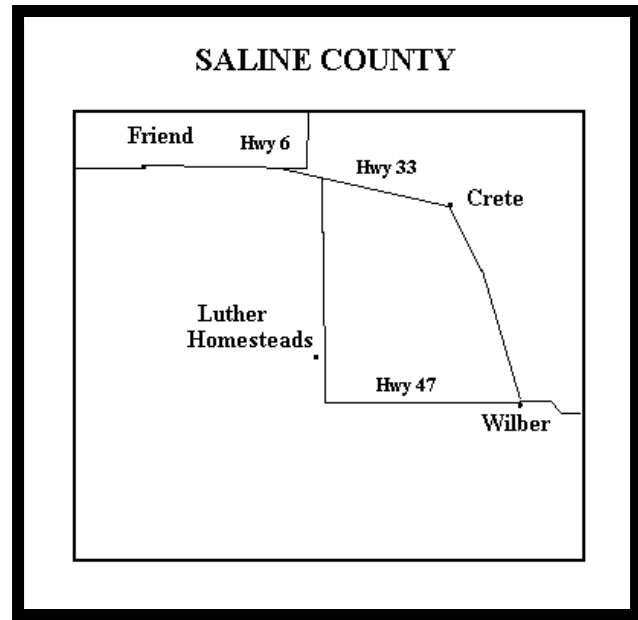
Henry appears on the Civil War militia roles for Swan Creek in 1861 and 1862. While in Illinois, the family attended (say the family histories) a Free Will Baptist Church.

After the death of Ebenezer in 1867, Aurilla and most of the Luther children, including Henry and Elizabeth, moved on to Brown County, Kansas. We find Henry and Elizabeth there in the 1870 federal census, along with their children George (nine), James (eight), Mary (six), Albert (four), Jesse (two) and Arthur (six months). All the children listed in the 1870 census except Arthur had been born in Illinois. A year this census, Henry and his family moved north to Saline County, Nebraska, to a farm located halfway



Henry and Elizabeth Luther.

between the towns of Friend and Wilber. In 1872, Henry's children begin to attend school in Saline County's newly-formed District 32. Their names and ages appear year by year on the school records, with one critical exception: in 1875 and 1876 the school records do not show any children of Henry or his relatives. It is hard to avoid the impression that the whole family moved somewhere for a period of two years—a break in their Saline residency that no family stories have recorded. In 1877, when the Henry Luther family reappears in the school records, the families of Luthers that made the trek west begin to take out patents on the land they had homesteaded. Henry's land is in Section 10, Township 6, Range 3 (marked on the map on the section above on Aurilla). Aurilla and her three children Henry, Mary Ann and Hanna, took 80-acre homesteads on adjoining lots, making a full half-section for the Luther clan. When he filled out the papers finalizing his homestead claim in 1876, Henry said that he has built a sod house on the land, dug a well, and put 55 acres under cultivation. Henry and Elizabeth's family appears in the North Fork Precinct of Saline County in the 1880 federal census. Ten of their eventual fourteen children were part of the enumerated household.



Saline County, Nebraska

Henry and Elizabeth joined the Church of God soon after the move to Saline County. The *History of the State of Nebraska*, published in 1882, describes this church: "Work in the interests of Christianity was begun by [the Church of God] in Crete in 1872 by the Rev. R.H. Button. the early services were held in railroad cars, depots, private residences, schoolhouses, and such places as they could get for this purpose. The body organized in January 1873 in which the Rev. E. D. Aller was closely identified, he being a sort of forerunner for the denomination in preparing for the organization of church bodies. The church was built in the fall of 1872, and E.D. Aller was the pastor. The church at that time contained twenty members, but for the scarcity of means to carry it on the church fell back and is now practically a defunct institution." One suspects that the large Henry Luther family leaving in 1884 may have finished it off. The church building appears to have been located about five miles south of where the Luthers were situated.

Land records in Saline County show Henry Luther purchasing an additional 80 acres from Daniel Q.K. and Susannah H. Smith on 22 September 1880 for \$250 and selling the same land on 24 December 1883 to Joseph Sobotka for \$900. Henry sold his homestead land the next year (1884) and moved to Custer County.

Several members of Henry's extended family, including two of Henry and Elizabeth's children, died in Saline County, and it appears that what is now the North Fork Cemetery was established on or near the place on their land where the Luthers were buried. The cemetery was neglected for many years and some early stones may have been lost.



The 1888 Butcher photograph of the Luthers: (l. to r.) Henry, Katie, Leon, Elizabeth, Walter, Bertha, Arthur, Cora, Martha, Mrs. Loyd's daughter (Mrs. Loyd in background), Ida, and George.

Thirteen years after arriving in Saline County, Henry and his family moved to Custer County, Nebraska. Here Henry took homestead land in Algernon Township, south and west of Mason City. The 1885 Nebraska state census lists Henry and Elizabeth and their children. Only Walter and Katie had not been born. There is information about their agricultural situation in this census. They had 160 acres of land, of which eighteen acres was under tillage. They had four horses, two mules, four pigs, and fifteen chickens. The previous year they had grown forty bushels of corn on five acres, and their chickens had produced 350 eggs.

The Solomon Butcher photograph of the Luthers shows them on this homestead about three years later. Judging by the age of the baby Walter in Elizabeth's lap, the picture was probably taken in late winter or early spring of 1888, and the place is almost certainly the Algernon homestead. (No building or homesite is on the quarter-section today that might mark its location, however.) The persons in the photograph have been a matter of some speculation. A copy of the picture with their daughter Bertha's handwriting on the back says that the pictured persons in left-to-right order are Henry, Katie, Leon, Elizabeth, Walter, Bertha, Arthur, Cora, Martha, Mrs. Loyd's daughter, Ida and George. Mrs. Loyd is standing in the background. At the time of this picture, George was already married to Nancy Alice Moore and they had two small children, but Nancy and the children are not in the picture. Who is in the photograph or portrait held by Henry is anyone's guess, but it



The Henry Luther family, perhaps in Custer County, around 189. Left to right: Leon, Henry, Jess, Walter, Katie (below), Cora, Albert, Elizabeth, Bertha, George, Arthur.

could be Jess and Al's double wedding picture from South Dakota. If so, then the only living member of the family not in the picture would be James, who was 24 and probably away from home. We could imagine him being represented by the empty chair.

After only four years in Custer County, the family moved to South Dakota, near Oelrichs, following the lead of some of their children. The homestead land in Custer County was sold to a Joseph R. Runyan on 21 December 1889 for \$1100, but there was a \$600 mortgage on the property that had to be taken into account. If the 1890 census had not been lost, it would show Henry and Elizabeth and their family living in South Dakota.

Two more years found them back in Custer County, where they bought land and stayed for another four years. Another family portrait was taken in these years, perhaps in 1893 or 1894. About 1895, most of the Henry Luther clan moved to Blue Rapids, Kansas, where some of the family worked in the gypsum mines. The 1900 federal census for Blue Rapids, Kansas, shows Henry, now age 63, and Elizabeth (called Lizzie in the census, age 57) and their children Leon (29), Bertha (17) and Katie (14). They lived in Kansas for eight years, returning to Custer county early in the new century. Four years after returning to Custer County, say the family histories, Henry and Elizabeth gave up housekeeping and moved in with their children.

Henry married Elizabeth **Cline**, 24 Feb 1860, in Swan Creek, Warren County, Illinois. Born 14 May 1843 in Mississippi. Died 8 Jun 1926. Children:

- 15 i. George Austin³.
- 16 ii. James Harvey.
- iii. Mary Josephine. Born 16 Jun 1864, in McDonough County, Illinois. Died 27 Oct 1883, in Saline County, Nebraska.
- 17 iv. Albert Henry.
- 18 v. Jesse Andrew.
- 19 vi. Arthur Franklin.
- 20 vii. Leon Ellsworth.
- 21 viii. Ida Alice.
- 22 ix. Martha Rosetta.
- x. Edward Byron. Born 20 Aug 1879, in Saline County, Nebraska. Died 8 Aug 1880, in Saline County, Nebraska.¹¹
- 23 xi. Cora Louisa.
- 24 xii. Bertha Elizabeth.
- 25 xiii. Katie Jane.
- 26 xiv. William Walter.

Edward Byron Luther
gravestone in Saline County, NE



¹¹Date on gravestone. Family history says Aug 16.



Elizabeth Cline Luther, about 1915.

The family history says that Elizabeth was “born in Ohio, second daughter in a family of four girls,” and that she “passed her girlhood days in Pennsylvania” and “came with the Luther family to Illinois.”

The birthplace of Elizabeth is a problem. The 1870 and 1900 censuses say Pennsylvania but the 1880 and 1885 censuses agree with the family records that it was Ohio. In the 1860 Illinois federal census, Elizabeth is said to have been born in Germany. As we will see below, identifying Elizabeth with an 1850 census entry leads us to the conclusion that she was born, not in Pennsylvania, Ohio, or Germany, but in Mississippi! The 1885 census testifies that her

parents were from Germany, and it is certain that she came from a German family, whether or not she was actually born in Germany. Family members tell of her being able to sing lullabies in German in her declining years.



Elizabeth Cline Luther, probably in her fifties.

The 1850 census record from Crawford County, Pennsylvania, tells us more. As noted above, Ebenezer and Aurilla Luther, along with their son Henry and the other children in their family, sojourned about 13 years in this county. If Henry courted Elizabeth while in Pennsylvania in his late teens or early twenties, Elizabeth’s family must have been living in this area. We find, in fact, that there is a Cline family in the neighborhood. Abraham Cline is age 45, and a laborer. His wife Lucy is 40. Both are from Germany. They have four daughters: Elizabeth, age nine, Catherine, age seven, Mary Ann, age five, and an infant Hannah. All of the daughters except the infant were born in Mississippi. This *must* be Elizabeth’s family. There are two small discrepancies, though. In the census record, Elizabeth is the first daughter, not the second, as the family history

claims. The other, as noted above, is that Elizabeth and two of her sisters were born in Mississippi. The Mississippi birthplaces are in fact quite plausible. Many Germans came in through the southern states in the period just before the Civil War.

We can even construct a plausible scenario how Elizabeth and Henry might have met. The Clines were living next to a Samuel and Agnes Luton in 1850. The Luton's family was growing quickly. When twins were born to them in 1850, they ended up five children under six years old. Possibly Elizabeth helped this next-door family with childcare in the early 1850s. As it happens, Henry's sister Caroline had married, in 1846, another Samuel Luton who was likely a cousin of the one living next to the Clines. This Luton connection might have brought Henry and Elizabeth in close contact with each other.

Carl McQuiety, the son of Elizabeth's daughter Katie, inherited his mother's picture of the aunt after whom Katie was named. This is presumably the Catherine Cline, age seven, on the 1850 census. There is also a picture of Katie Cline's husband, Jake (last name, unfortunately, unknown). A story that has descended in the family tells how two of Elizabeth's sisters (which two is uncertain) came through Blue Rapids, Kansas, on the train during Elizabeth's stay in Kansas, enquired about her, but were not able to locate her before the train had to leave and so missed seeing her. Sad to say, it is possible that Elizabeth never saw another member of her natal family after leaving Pennsylvania at the age of sixteen.



Elizabeth's sister Catherine Cline

A brief synopsis of Elizabeth's life after marriage is given above, in the section under Henry Luther. She lived in Crawford County, Pennsylvania (1843-59), Warren County, Illinois (1859-69), Brown County, Kansas (1869-71), Saline County, Nebraska (1871-84), Custer County, Nebraska (1884-88), Oelrichs, South Dakota (1888-91), Custer County, Nebraska, again (1891-1895), Marshall County (Blue Rapids), Kansas (1895-1902), and finally Custer County for a third time (1902-6), before giving up housekeeping.

Henry died in 1911, but Elizabeth lived on for another fifteen years. During that period Elizabeth met and married a man named Richard Haight. She met him in Canada, while

staying with her son Walter. Richard and Elizabeth returned to the U.S., but Haight wanted to live in Canada, and Elizabeth wanted to stay in the U.S., so they separated. Elizabeth used the name "Luther" for the rest of her life. She died at the home of her daughter Bertha and was buried alongside Henry in the Broken Bow, Nebraska, cemetery.

5 James² **Luther** (Ebenezer¹). Born 4 May 1838 in Erie County, New York. Died 14 Aug 1894 in Hastings, Nebraska.



James Luther, from a Civil War tintype.
The only known picture of James.

Ebenezer and Aurilla and their children moved from New York to Fairfield County, Pennsylvania, about 1845, when James was seven. In 1850, James Luther and his sister Sarah Ann (listed as ages 11 and age 14, respectively) are enumerated in the federal census for Mercer County, Pennsylvania. They are in Salem Township, which is only a few miles from where their parents lived in Crawford County the late 1840s, staying on the farm of a James and Elizabeth Simpson. They may have been either boarding or working.

James made the trek from Pennsylvania to Nebraska with the majority of Ebenezer and Aurilla's children. At the first stop along the way, Illinois, the family stayed for 10 years. While in Illinois, James became a Civil War soldier, enlisting in Company "G," Regiment 8, Illinois Cavalry, and serving two enlistments over four years. Before his enlistment, James shows up in the 1860 census for Warren County, Illinois, living with his parents in Swan Township. In 1861 he was enumerated on the militia roles for Warren County.

James's military records are available at the U.S. National Archives. On these records, he is said to have "blue eyes, light hair, dark complexion," and to be "five feet nine inches high." He enlisted first in Macomb, Illinois, on 14 September 1861 and was mustered in at Camp Kane. For his second enlistment, he was mustered on 30 November 1863 at Ely's Ford (or at Culpepper), Virginia. His military records mention a few highlights: in February 1862, he was hospitalized for sickness at the General Hospital in Alexandria, Virginia; in March 1863, he was assigned to the regimental mule train; on 21 June 1863, he was slightly wounded in action at Upperville, Virginia; in July 1864, he was sick and staying at Camp Relief; and in September 1864, he was absent on detached service at Port Tobacco County, Maryland. A story in the family says that James was captured and imprisoned during the war, but no mention of this is found in his records. There is also a story also that his wound was a saber cut to the head and that it produced fits of insanity later in life and led to him being

confined to an asylum for the last few years. Again, no mention of this in the military records.

After James was discharged from the military, he returned to Illinois and married. The family histories provide little information about James's wife and family—all they tell us is that he married a woman named Suzy and that he had two boys and one girl. As we will see, James and Suzy had two girls and a boy.

He married Susan **Hart**. Children:

- i. John³. Born circa 1867.
- ii. Eliza Jane. Born Jun 1870. Died before 1911 in Hall County, Nebraska. She married Otto **Waechter**, son of William **Waechter** and Amahlie **Ninmans** of Auma, Germany, 10 Dec 1887, in Custer County, Nebraska.
- 27 iii. Virginia.

While it seems reasonable that James and Suzy came to Kansas and then Nebraska with James's mother and siblings, the 1870 Kansas census record for James and his family says that the three-year-old John was *born* in Kansas. If correct, this suggests that James and Suzy may have scouted ahead of the larger Luther migration from Illinois to Kansas. That migration included, besides James and Suzy, James's mother Aurilla and James's four siblings, Henry Luther, Sarah Ann Luther (Gales), Mary Ann Luther (Brown), and Hannah L. Luther (James). The place where James and Suzy and their family were living in Kansas was at least 15 miles from where Henry Luther and the Browns were in 1870.

The son John, born in 1867, would have moved to Saline County with James and Suzy in 1871 or 1872. In the school attendance lists for Wilbur, Saline County, John Luther occurs on the 1873 list (when he was said to be five years old) and the 1874 list (when he was six). None of the children of James and Suzy are on the Wilber school lists for 1875 and 1876, but they reappear in 1877, when John is 10.

After this, the family began to break up, with James entering custodial care in a mental asylum and Suzy presumably dying. With the dissolution of the home, John and his sister Liza Jane are boarded with other families. At the time of the 1880 census, when John was 12, he was with an older Austrian couple. In the 1885 state census, he is a 17-year old farmhand for a younger Bohemian couple. This is as far as the records take us. Whether John died young or moved away is not clear. Nor is it known whether he had a wife or children.

The second child, Eliza Jane, was born about June 1870 in Capioma Township, Nemaha County, Kansas. In the 1870 federal census, she is said to be one month old in July of that year. She moved to Saline County, Nebraska, with her parents when she was about two. Her name first appears on the Wilber school lists in 1877, when she was said to be seven.

With the breakup of the home, Liza was boarded with other families. At the time of the 1880 census of Saline County, when Eliza was nine, she was staying with the same family that boarded the schoolteacher. Perhaps the teacher had some role in finding Liza a place to stay.

Seven years later, the 17-year-old Eliza married Otto Waechter, a naturalized German immigrant. The marriage records say that Eliza and Otto were united at a ceremony in Otto's house on 10 Dec 1887. According to his 1906 passport application, Otto had immigrated from Baden-Württemberg in 1871. (His parents, though, were from Auma, Germany, which is in Thüringen).

The marriage must not have worked out. Within 13 years, Otto would describe himself as "single" (the 1900 federal and the 1905 Iowa state censuses), and, 23 years after the marriage, as "widowed" (on the 1910 federal census for Iowa). Whether Otto was truly widowed in 1910 is not certain. The estate of a Liza Waechter was probated by a lawyer in Grand Island in late 1911, according to a notice placed in the *Grand Island Independent*. The probate may have resulted from Otto's effort to claim some part of the estate of his estranged/divorced wife after her death, or from her family's effort to make sure that Otto did not inherit. Since Liza is not on the 1910 Nebraska census, she may have died just before the summer of 1910.

One curiosity about the children of James and Suzy is why they were not taken in by one of James's siblings in Saline County. Mary Brown, for example, assumed the care of Hannah's daughter Minnie when Hannah died.

Suzy is said in the family histories to be buried in the North Fork Cemetery at Wilber, Nebraska. If she is, there is no stone on her gravesite. The cemetery records, which start in 1883, do not list Suzy, so she may have died before 1883.

James is buried in the G.A.R. cemetery at Hastings, Nebraska. The 1880 federal census shows him living at the Lincoln Hospital for the Insane. He was 41, married, suffering from "mania," and the onset of his condition came at age 38. Official records from the State of Nebraska say that he was committed to what is now the Lincoln Regional Center in January of 1886—perhaps a later committal or a transfer, since we know from census records that

he was in the Lincoln Region Center in 1880—and to the Hastings Regional Center in November of 1889. The diagnosis was “chronic mania.” Five years later, he died of Bright’s disease at Hastings Regional Center.

6 Mary Ann² **Luther** (Ebenezer¹). Born 3 May 1840, in Erie County, New York. Died 6 Sep 1901 in Nemaha County, Kansas.

Mary Ann was the last of Ebenezer and Aurilla's children to be born in Erie County, New York. Her childhood memories would have mostly been about her time in Crawford County, Pennsylvania.

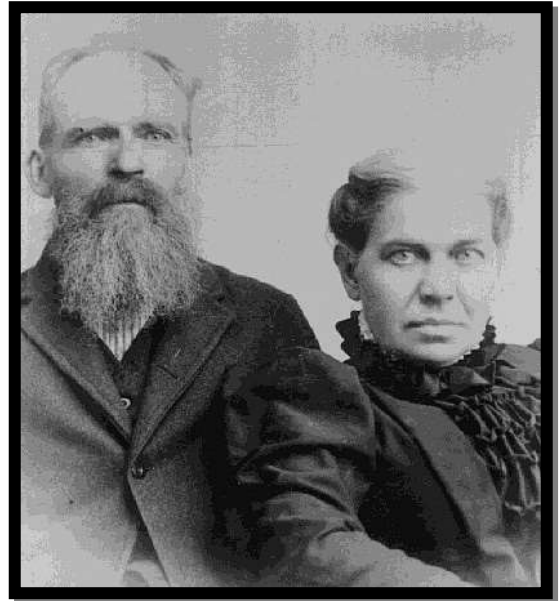
She married Orlando **Brown**, son of Benjamin **Brown** and Armina Anna **Cotton**, 26 Jun 1856, in Pennsylvania. Born 25 Sep 1837, in Potter County, Pennsylvania. Died 12 Jan 1919 in Sabetha, Kansas. He married again to Mary Elizabeth **Gamble** in 1905. Children:

28 i. Franklin Walter³.

Mary's husband Orlando was born in Pennsylvania, but his parents were both from New York. They appear to have moved to Pennsylvania in the mid-1830s, first to Potter County, where Orlando was born, then to Erie County, where they appear on the 1850 census. On this census, Orlando, age 12, and his parents were living in Wayne Township, Erie County, Pennsylvania.

It is not clear how the 18-year-old Orlando Brown, a resident of Erie County, would have encountered Mary Ann Luther of Crawford County. The two counties are contiguous, but Mary Ann and her family were living in a part of Crawford County that was at least 30 miles from anywhere in Erie County.

Orlando and Mary Ann's son, Franklin Walter Brown, was born in Mercer County, Pennsylvania, on 24 May 1857, about a year after the couple's marriage, so it appears that the young couple had chosen to make their home near Mary Ann's parents. At this point, they disappear from official records until 1870, when Orlando and Mary Ann show up in Kansas with the other Luthers and journey with them to Nebraska. Where was the couple in the turbulent 1860s? The Luther left Pennsylvania in 1859 and headed to Illinois, but there is no evidence that Orlando and Mary Jane were part



Orlando and Mary Ann Brown

of this group migration. Elva Spiker, the granddaughter of Franklin Walter Brown, compiled histories of the Browns in the 1990s. In these summaries, she mentions two pre-Kansas locations for Orlando and Mary Ann that may tell us what they were doing in the 1860s. One location she mentions is Wheeling, West Virginia, which until 1863 was part of Pennsylvania. The other is Michigan. Possibly Orlando and Mary Ann moved to Wheeling when most of the Luthers left Crawford County, Pennsylvania, in 1859. Orlando's parents appear to have moved from Erie County, Pennsylvania, to Croton Township, Newaygo County, Michigan in the 1860s, probably before 1867. Orlando and Mary Jane may have made this move with them.

It would be reasonable to think that Orlando and Mary Ann staged their move to Kansas by joining the Luthers, however briefly, in Illinois—Warren County, Illinois, lies along the wagon and train travel routes from Michigan to Kansas. But there is no evidence for an Illinois pause. In any case, Orlando and Mary Ann arrive in Kansas before the 1870 federal census—possibly quite a while before, since Mary Ann's sister Sarah Ann was there as early as 1867.

When the Luther families left Kansas and moved to Saline County, Nebraska, in 1871 to take up homestead grants, Orlando and Mary Ann went with them. The patent that Orlando filed for their Saline County land—their tract was next to that of Mary Ann's brother Henry—says that they arrived at their homestead land on 4 June 1871.

Orlando and Mary Ann are on the 1880 Federal Census for Saline County, Nebraska:

Name	Sex	Race	Age	Status	Relation	Occupation	Birth Place
Orlando Brown	M	White	42	Married	Head	Farmer	Pennsylvania
Mary Brown	F	White	40	Married	Wife	Keeping House	New York
Walter Brown	M	White	23	Single	Son	Farmer	Pennsylvania
Minnie Brown	F	White	6	Single	Niece		Nebraska

For the first few years that they were in Saline County, Orlando and Mary Ann's son Walter appears as a teenage student on the school records. After 1879, May (Minnie) James, daughter of Mary Ann's sister Hannah, also shows up in the school records with Orlando and Mary Ann listed as parents. Minnie, after 1881, is called "Minnie Brown" in the records.

In 1884, Henry Luther's family left Saline and moved to Custer County to take up new homestead land. Orlando and Mary Brown and the rest of the Luthers remained in Saline. The Brown family is enumerated there in the Nebraska state census for 1885. Minnie is now called an “adopted daughter.”

Orlando and Mary Ann left Saline County in 1895, having lived there almost 25 years. They sold their land in 1894, and the next year they returned to Kansas and settled in Rock Creek Township of Nemaha County, in the vicinity of Sabetha, Kansas. Just after their move, they appear on the 1895 Kansas state census. Their son Walter moved to Kansas with them and he and his family lived next door. In the household with Orlando and Mary Ann is a Leon Luther. This is Mary Ann’s nephew, the son of Henry Luther. Crops in Nebraska were failing in the mid 1890s and Henry Luther and many of his children were moving to Kansas—most of them temporarily—to find jobs in the gypsum mines.

The last census where we see Orlando and Mary Ann together is the 1900 federal census for Nemaha County, Kansas. Mary Ann died on 6 September 1901, aged 61. Her burial site is unknown.

On 2 Feb 1905, Orlando remarried to Mary Elizabeth Gamble, a widow with grown children. Orlando died on 12 Jan 1919, age 83. He is buried in the Sabetha Cemetery in Nemaha County, Kansas. Mary E. died three years later, on 8 Feb 1922, and was also buried in the Sabetha Cemetery.

7 Hannah L.² **Luther** (Ebenezer¹). Born 12 Oct 1845 in Pennsylvania. Died 28 Dec 1875 in Saline County, Nebraska.¹²

Hannah was the final child born to Ebenezer and Aurilla Wait Luther and the only child to have been born after their move to Pennsylvania. When her family arrived in Illinois in 1859, she would have been about 14. The 1860 federal census, compiled in the year after their move, says that she was then 15. Just eighteen months after this census, Hannah married at age 16.

She married Jesse Herber **James**, son of Elijah **James** and Leutitia **Bennett**, on 5 Jan 1862. Born 10 Nov 1839 in Kentucky. Died 5 Feb 1911 in Seward County, Nebraska. Jesse later married Lydia A. **Smith** and Anna Mary **Buck**. Children of Hannah and Jesse:

- 29 i. William Ellworth³.
- 30 ii. Herbert Byron.
- 31 iii. Letitia A.
- 32 iv. Minnie Bell.

James was 22 at the time of the marriage. According to a descendant of one of James's half brothers, Jesse H. James's father, Elijah James, was born between 1790 and 1794. After raising a family with an earlier wife, Elijah married Jesse's mother, Lutisha Bennett, on 19 Apr 1837 in Kentucky. Elijah James died in 1844, and Lutisha Bennett James then married Richard Ray. Jesse's half siblings (from an unknown mother) are Washington James (born 1819), Isaac James (born 1821), Amos James (born 1823), Rolland James (born about 1825), Mary L. (Polly Ann) James (born 1827), Ann Elizabeth James (born 1831), and Henrietta James (born 1832). Rolland James, who married Jane Cayton, was appointed guardian of Ann Elizabeth and Henrietta James after Elijah's death.

We first see Jesse in official records on the 1850 census for Edmonson, Kentucky. He is 11 and living with his mother and stepfather and stepbrother. Doug James notes that the 1851 tax list for Edmonson County, Kentucky, includes Isaac James, Jesse's older half brother, and says under Isaac's name 'James agent for H.L. James.' On the 1856 list, Isaac is called 'Do agent for J.H. James.' Jesse, it seems, had inherited some land from his father.

¹² Hannah's birthdate in the family histories is 12 Nov 1845. By computing from her death date and lifespan on her tombstone (30 years, 2 months, 16 days), she would have been born on 12 Oct. There are also problems with her death date. The accepted date, 28 Dec 1875, is from the tombstone. The family histories say 13 Jan 1873.

In 1859, Jesse moved to Illinois. He was enumerated on the farm of fellow-Kentuckian Andrew J. Cayton as a farm laborer in the 1860 census. Jesse is on the Swan Township militia roles for both 1861 and 1862.

After Hannah and Jesse were married in 1862, they seem to have taken up residence in Scotland Township, McDonough County. Ebenezer died in 1867, and most of his children and their families began to move west. Their first stop was Brown County, Kansas. Jesse and Hannah were there by 1868 or 1869. (Their son Herbert was born in Kansas in April of 1869, so they must have arrived before then.) On the 1870 federal census they listed the value of their real and personal estate at less than a thousand dollars, a figure much lower than the financial status of the families around them. Hannah's mother Aurilla is living with them.

In 1871, Jesse and Hannah and most of Hannah's siblings moved from Kansas to Saline County, Nebraska, to take advantage of offers of homestead land. Jesse took out a patent on 80 acres of land near the homesteads of his Luther inlaws. He did not prove up on the land until 1877, but the patent papers say that he had lived on the land since 23 March 1871.

Hanna, according to her tombstone, died on 28 Dec 1875 in Saline, Nebraska, aged 30, and was buried in Saline County's North Fork Cemetery. She left behind a family of four children under 11. The youngest child was taken in by Hannah's sister, Mary Ann Brown. The other children continued to live with their father. Their grandmother Aurilla perhaps provided some maternal care during the last few years of her life. The James children are poorly represented in the Saline school records after 1878, perhaps reflecting the unsettled conditions in their home.

Jesse H. James remarried to the widow Lydia ("Liddie") A. Smith on 5 July 1877 in Beaver Crossing, Nebraska. Liddie already had children. We see a blended family on the 1880 census. In 1880, Jesse bought out the 80 acres of his mother-in-law Aurilla Luther's homestead. He sold the whole quarter-section four years later. By the time of the 1885



Hannah Luther's grave in Saline County, Nebraska. Since this photo was taken, the stone has been toppled and broken.

Nebraska state census, James and Liddie had moved to Seward County, Nebraska. Only Lydia's daughter was still at home with them.

According to Jesse's obituary, Liddie died in 1894 and Jesse married for a third time on 5 Jul 1897 to Anna Mary Buck Smith. When James was 60, the 1900 federal census noted that two of Jesse's Smith stepchildren were living with James and Mary in the Seward County property that they were renting. The last official sighting of Jesse James, on the 1910 census, came just a year before he died. At that time, he was still living with Anna Mary on a rental property. They were operating it a boarding house. Jesse died on 5 Feb 1911 and was buried in the Beaver Crossing Cemetery.



Jessie James and his and Hannah's family. Taken about 1890, probably in Saline County, Nebraska, not long after the three James siblings had married. Minnie Bell, who was 17 and unmarried in 1890, is missing from the family group, even though she was probably in Saline County at this time. Her absence may reflect a social distance from the rest of the family—Minnie had grown up the family of her aunt Mary Ann.

Third Generation

8 Henry F.³ **Luton** (Caroline², Ebenezer¹). Born circa 1848, in Mercer County, Pennsylvania. Died 18 Oct 1879 in Oskaloosa, Mahaska County, Iowa.

Henry F. Luton was the second child of Samuel Luton and Caroline Luther.

He was born in Mercer County, Pennsylvania, but in the second half of the 1850s his family transferred to Illinois. The 1860 census finds him there, age 11, living with his parents and his siblings. His aunt Sarah Gales and Sarah's husband Charles were also in the household.

Henry would have been about 17 when his mother died. Henry's father moved to Iowa in 1865, married a widow with children, and blended their families. Henry himself may also have moved to Iowa—he married there in 1869.

He married Priscilla **Harris**, daughter of James **Harris** and Fanny **Little**, on 18 Oct 1869 in Oskaloosa, Mahaska County, Iowa. Born 1843. Died 11 Dec 1916 in San Bernardino, California. Children:

- 33 i. Esther Luton⁴.
- 34 ii. Nelson Harrison.
- iii. Oliver Wendell **Luton** (Henry F.³, Caroline², Ebenezer¹). Born 19 Apr 1874 in Oskaloosa Township, Mahaska County, Iowa. Died 19 Sep 1927 in San Bernardino, California. He married Alice Bernice **Christian**. Born about 1879 in Chicago, Illinois.
- 35 iv. Frank Mahaska.
- 36 v. Henry Elmer.

The next year, 1870, Henry and Priscilla are found by federal census-takers. The two of them are living in Washington Township of Keokuk County, Iowa. Over the next decade, Henry and Priscilla would have five children in quick succession. Family records report that Henry died on 18 October 1879 in Oskaloosa, Mahaska County, Iowa, at age 30. This would have been just a few months after the birth of his last child. No official records support this death date, but it is plausible. The Iowa state census of 1885, just six years later, show Priscilla designated as a widow, head of a household with four children. Bessie Luton, the youngest child in the 1885 census listing, however, is just two years old at this census, which would not be compatible with an 1879 death for Henry—unless the child is not his.

Priscilla died on 11 Dec 1916 in San Bernadino, California.

9 David Ebenezer³ **Luton** (Caroline², Ebenezer¹). Born 3 Aug 1857 in Mercer County, Pennsylvania. Died 7 Jul 1929 in Claremore, Rogers County, Oklahoma.

David was the last of Samuel and Caroline's children to be born in Pennsylvania. He was given the first name of Caroline's father (Ebenezer) as a middle name.

Soon after David's birth, his family moved to Illinois. Our first hint of David's existence is on the 1860 federal census of Swan Creek, Warren County, Illinois, when he is three. David's mother Caroline probably died before he was eight. In 1865, David's father remarried to an Iowa widow with children and soon moved to Kansas. Presumably David made the move to Kansas with his family. At the time of the 1870 census, however, the 13-year-old David was no longer living with his father and stepmother. Instead, he was a few miles away, staying with the Robert and Amelia Wood family, in Greenwood Township, Franklin County, Kansas. Five years later, at the time of the 1875 Kansas state census, the 18-year old David was living about twenty miles away from his parents, with the Hugh and Mary McEvoy family in Anderson, Reader County, Kansas.

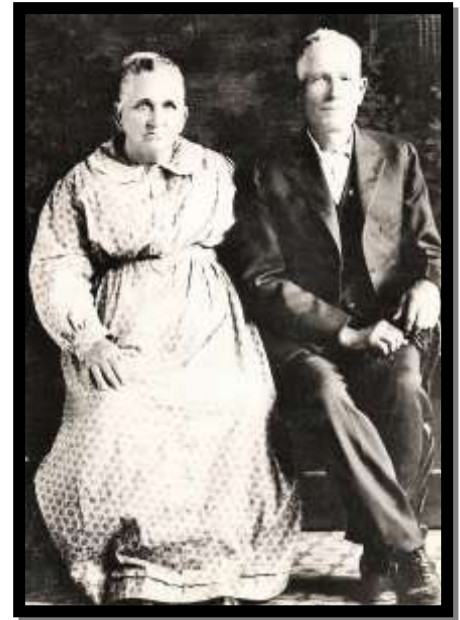
Somewhere around 1881, David married and started his family.

He married Rebecca Lavina **Coker**, daughter of Dempsey Fields **Coker** and Elizabeth Jane **Marler**, in 1881 and on 12 Oct 1883. Born 16 Sep 1859 in Arkansas. Died 29 Oct 1928 in Rogers County, Oklahoma.

- 37 i. Lewis Charles⁴.
- 38 ii. William Emory.
- iii. Samuel Fields. Born 13 Feb 1887 in Indian Territory, Oklahoma. Died 5 Mar 1903 in Claremore, Rogers County, Oklahoma.
- 39 iv. Dempsey Albert.
- 40 v. Ruth Ana.
- 41 vi. Joseph Madison.
- vii. Elmer. Born 31 Aug 1896. Died 19 Sep 1897. Died as infant.
- viii. George. Born 21 Nov 1898. Died 29 Aug 1899. Died as infant.
- ix. Jesse Albert. Born 16 Jul 1900 in Indian Territory, Oklahoma. Died Nov 1971 in Moorcroft, Crook County, Wyoming. He married Ethyl R. **Workman**. Born about 1918.

Rebecca, though born in Arkansas, moved with her family to the Cherokee Nation part of Oklahoma territory. Rebecca's father, one-eighth Cherokee, made several trips of varying lengths between Arkansas and Oklahoma. Rebecca says that she made a permanent move to Oklahoma at the age of six. A 1901 book on the Indian Territory of Oklahoma says this about her father:

"Reverend Dempsey Fields Coker was a native of Arkansas. He served the South as a Confederate soldier during the Civil War and in 1869 came to the Cooweescoowee district in the Cherokee nation, locating on the Verdigris river about five miles from the present home of his son Lewis (Lewis Cass Coker). There he resided for several years, after which he located near Claremore, his death occurring at his home four miles east of that place in 1881. He was a Baptist minister and his influence for good was most widely felt. He laboured untiringly for the uplifting of the people among whom he lived and his Christian precepts and example was a potent influence. He also served as prosecuting attorney for the Cooweescoowee district for two years and was afterward a member of the Cherokee national council. His wife, who bore the maiden name of Eliza Marler, was a white woman and died in Arkansas before the family came to the territory. She represented an old family of Tennessee."¹³



David Ebenezer Luton and his wife
Rebecca Coker.

How David met the young Rebecca is unknown. Perhaps David moved to Oklahoma in the late 1870s. David and Rebecca took up residence on lands of the Cherokee Nation. They began their family in 1881. In 1893, David was listed on the census rolls for the Oklahoma and Indian Territory. He was living in Cooweescoowee District of the Cherokee Nation.

The 1890 census of the Cherokee nation records David (age 32), Rebecca (age 29), and the first four of their children, Lewis, Willie, Samuel, and Dempsey. They are on a farm in the Cooweescoowee District of the Oklahoma and Indian Territory. The farm has 2 dwellings and 2 outbuildings. Of its 50 acres, 31 were under cultivation. On a census of the Oklahoma and Indian Territory authorized in 1896 (but perhaps completed later), David is listed as a white, adopted member of the Cherokee nation.

¹³Online at <https://babel.hathitrust.org/cgi/pt?id=wu.89063251656&view=1up&seq=7>

David and his family were counted in the 1900 census. They were living in the Cherokee Nation, Indian Territory, in Oklahoma. Six living children were listed on the rolls—only the youngest son was not yet born. In October of the same year, David and Rebecca and their family were listed on the Cherokee Roll of the Cherokee Nation. As in 1890 and 1893, they were living in Cooweescoowee District. They had seven living children in this list, the oldest 19 (Lewis), the youngest just three months (Jesse). They also had a granddaughter in the household, Alice R., one year old, the daughter of their oldest child Lewis and his wife Ida. Rebecca on these rolls says that she is one-sixteenth Cherokee. Rebecca and David were interviewed by government representatives at this time in order to establish the right of the family to be enrolled in the Cherokee nation. Rebecca says in the interview that she came to Oklahoma when she was six, from Arkansas, and that she has been “married twice, but to the same man.” The first time, she says, was 1881. The second time was 12 Oct 1883. Rebecca names her seven children for the interviewer, but she also adds that she had two children just before her most recent child, Jesse, that did not live. It appears from the documentation related to this case that David's application for enrolment in the Cherokee nation by adoption was eventually rejected because he and Rebecca were not married before the enrolment of 1880.

For the 1910 census, David and Rebecca's family were probably living in the same place, though it was now known as Township 4 of Delaware County, Oklahoma. Only two children remained at home. Before the 1920 census, David and Rebecca and their youngest son moved into Claremore in Rogers County, Oklahoma.

Rebecca died on 29 Oct 1926 and David died on 7 Jul 1929 in Claremore, ages 67 and 71.

10 James Ezra³ **Luton** (Caroline², Ebenezer¹). Born circa 1860 in Warren County, Illinois. Died 18 May 1945 in Mesa, Maricopa County, Arizona.

James Ezra was the first of Samuel and Caroline's children born after their move from Mercer County, Pennsylvania, to Warren County, Illinois. Before James was six, his mother would die and his father would remarry. The first place James appears on any official record is the 1870 census, which shows James, age 10, and his six-year old sister Eva Esther living in Franklin, Kansas, with the newly blended family.

Ten years later, at age 19, James entered into his only marriage.

He married Annie E. Robbins on 7 May 1880 in Franklin, Kansas. Born about 1858 in New Jersey. Died before 1900 in Kansas.

- i. Lillie May⁴. Born 1893 in Kansas. Died 6 Aug 1928 in Mesa, Maricopa County, Arizona.

Barely a month after the marriage, the new couple are enumerated in the 1880 census. James is a farm laborer. Their only child (to live to adulthood, at least), their daughter Lillie May Luton, would be born 13 years later. Before the decade of the 1890s was out, Annie would die. The 40-year-old widower, calling himself a “day laborer” on the 1900 census for Concordia, Kansas, did not have his six-year-old daughter with him—she may have been staying with relatives. But by the 1910 census, Lillie, now 16, has joined him, and they have moved to Bent County, Colorado. The last census that shows Lillie living with James is the 1920 census. The father and daughter have moved into Montrose, Colorado. James and Lillie then make one last move, to Mesa, Maricopa County, Arizona. This change may have been for Lillie's health. She died of tuberculosis on 6 Aug 1928, apparently without ever marrying.

On the 1930 census, James is alone. The census-takers encounter him for the last time ten years later, in 1940, when James is 79.¹⁴ James died five years after this, at age 84. He was living alone—the death certificate had to be filled out by looking through his papers for

¹⁴ There is someone named “Henry Standage,” a 40-year-old house painter, living with James in 1940. He is labelled as a “Son,” but this is probably a clerical error. James Ezra, by the way, shows quite a bit of confusion over the years about where his mother was born, as we might expect of a boy who lost his mother at such a young age and grew up with a stepmother. He never gives the census enumerators the correct venue, New York. After 1920, he settled on “Maine” as the location.

information. According to the certificate, James had been suffering from some form of senile dementia for the last 10 years. He was buried in the City of Mesa Cemetery.

11 Asher³ **Webster** (Samantha², Ebenezer¹). Born 4 May 1857 in Crawford County, Pennsylvania. Died 12 Apr 1948 in Rockland, Venango County, Pennsylvania.

Asher was the first child of Byrum Webster and Samantha Louise Luther. We can track his growth on the censuses of 1860, 1870, and 1880. He was living with his parents on their farm in Fairfield Township, Crawford County, Pennsylvania. In these years, Asher acquired five siblings. As the oldest son, he probably took on responsibilities early. The 23-year-old Asher appears to have replaced his aging, 77-year-old father on the 1880 census as head of the house. This is perhaps because Asher was the one actually running the farm on which they lived. (He is listed on the census as a “farmer.” His father is called a “shoemaker.”)

He married Amanda Claretta **Smith**, daughter of William S. **Smith** and Susanna **Bressler**, on 7 Jul 1881. Born 10 Jan 1864 in Indiana. Died 20 May 1951 in Rockland Township, Venango County, Pennsylvania. Children:

- 42 i. Blanche Alice⁴.
- 43 ii. Harriet M. (Hattie).
- 44 ii. Maude M.
- 45 iii. Vance F.
- 46 iv. Mary Etta.
- 47 v. Nora Irene.
- 48 vi. Clara L.
- 49 vii. Ruth Ann.
- 50 viii. Dorothy Grace.
- 51 ix. Margaret Virginia.
- 52 x. Bernice Isabella.

The next year after the 1880 census, Asher married the woman who would be his lifelong companion, Amanda Claretta Smith. Mandy, who was just 17 when they were married, was seven years younger than Asher.

Presumably Amanda joined Asher on the Fairfield Township farm for the rest of the 1880s. The death of Asher’s father in 1891 and the remarriage of his mother Samantha the next year may have prompted Asher and Amanda to move in the early 1890s. When the 1900 census came around, Asher and Amanda had taken up residence on a farm about 30 miles away. It was in Richland Township of Venango, the county just to the southeast of Crawford. We can see on the census that eight of their 11 children have been born.

At the time of the 1910 census, Asher and Amanda’s large family was complete. The youngest, Bernice, was three years old. Remarkably, 10 of the 11 children of Asher and

Amanda were girls. Asher was now 52 and Amanda was 45. Their only son, Vance, was 20 years old and still at home, as were the six youngest daughters. The daughter between Vance and the girls, Mary Etta, had married and left home in April, just before the census.

Name	Sex	Race	Age	Status	Relation	Occupation	Birth Place
Asher Webster	M	White	52	Married	Head		Pennsylvania
Amanda C Webster	F	White	45	Married	Wife		Indiana
Vance F Webster	M	White	20	Single	Son		Pennsylvania
Nora I Webster	F	White	15	Single	Daughter		Pennsylvania
Clara L Webster	F	White	13	Single	Daughter		Pennsylvania
Ruth A Webster	F	White	10	Single	Daughter		Pennsylvania
Dorothy G Webster	F	White	7	Single	Daughter		Pennsylvania
Margaret V Webster	F	White	5	Single	Daughter		Pennsylvania
Bernice I Webster	F	White	3	Single	Daughter		Pennsylvania

The next decade was one of marriages and grandchildren for the Websters. By the time that the 1920 census was recorded, only the three youngest girls were left at home. Sometime before the next census in 1930, Asher and Amanda, with all or almost all of the children out of the home, moved a few miles away, to Rockland Township in Venango County. They were probably downsizing. The new property was still called a farm, however, and Asher and Amanda were owners, not renters. Over the next decade, with Asher entering his 80s and Amanda her 70s, they probably need some kind of assistance. A ten-year old granddaughter was living with them at the time of the 1940 census.

Asher died on 12 April 1948 in Rockland, Venango, Pennsylvania, after a couple of years of illness. He was 90. At the time of his death, he and Amanda had 36 grandchildren and 42 great-grandchildren. After Asher's death, Amanda went to live with her daughter Harriet, where we on the 1950 census. On 20 May 1951, Amanda died, three years after Asher. Both were buried in Sunset Hill Memorial Gardens, Cranberry, Venango County, Pennsylvania.

12 Henry Byrum **Webster** (Samantha², Ebenezer¹). Born 21 Oct 1861 in Crawford, Pennsylvania. Died 24 May 1954 in Meadville, Crawford County, Pennsylvania.

Henry, the second son¹⁵ of Bryum and Samantha, was just as prolific and long-lived as his brother Asher. In the 1870 census, the eight-year-old Henry was living with his parents in Fairfield Township, Crawford County, Pennsylvania. Ten years later, at the time of the 1880 census, Henry was still on the same farm. He was working on the farm. His older brother Asher was listed as the main farmer and the head of the family. Both parents and the two youngest sisters were also living with them. Presumably Henry continued working on the Crawford County farm through the 1880s, at least until his marriage.

He married Agnes Viola Stallsmith, the daughter of Isaac Stallsmith and Eva Elizabeth Ross, on 10 Nov 1891. Born 14 Mar 1875 in Mercer County, Pennsylvania. Died 1926 in Crawford County, Pennsylvania. Children:

- 53 iii. Ethel May⁴.
- 54 iv. George Washington.
- 55 iii. Nellie Lauree.
- iv. Jason Earl. Born 18 Aug 1897 in Mercer County, Pennsylvania. Died Feb 1979 in Hadley, Mercer County, Pennsylvania. He married Mildred D. **Riley**, daughter of Albert B. **Riley** and Dora Bell **Rhoades**, before 1930. Born 15 May 1903. Died Apr 1985 in Mercer, Pennsylvania.
- 56 v. Samuel Ealon.
- vi. Joseph Clinton. Born 19 Oct 1901 in Deer Creek Township, Mercer County, Pennsylvania. Died 25 Aug 1993 in Fredonia, Mercer County, Pennsylvania. He married Mabel H. **Willett**, daughter of William **Willett** and Maryette **Randolph**, on 21 Sep 1925 in Cuyahoga, Ohio. Born about 1888 in Cherry Valley, Ohio. Died 15 Mar 1984 in Shaker Heights, Cuyahoga, Ohio.
- 57 vii. Mary Grace.
- 58 viii. Frank Burton.
- ix. Twin Boy 1 Webster. Born 1908. Died 1908.
- x. Twin Boy 2 Webster. Born 1908. Died 1908.
- xi. Infant Webster. Born 1912. Died 1912.
- 59 xii. Merle Leon Webster.

At the time of their marriage, Viola (as she was usually known) was 16 and Henry was almost 30. After their marriage, Henry and Viola moved to Mercer County,

¹⁵ But third child—a daughter, Sarah Jane, had been born between Asher and Henry, but she died when she was only two.

Pennsylvania, where Agnes had grown up. Agnes's mother had died in the 1880s and her father died in 1897. In 1900, Henry and Viola were living in New Vernon Township, Mercer County. Their family now included five children.

By the time of the 1910 census, the family had moved to Sandy Creek Township of Mercer County and were living on or near the Stallsmith property. Seven children were in the household. Twin boys had been born in 1908, but they had died at birth. Another child died on the day it was born in 1912. For the 1920 census they were still in Sandy Creek Township. All of their 12 children had been born. The girls Ethel May and Nellie Lauree had married in the 1910s and left home, but all of the others (except the three who died as infants) were still in the home.

Name	Sex	Race	Age	Status	Relation	Occupation	Birth Place
Henry Webster	M	White	58	Married	Head		Pennsylvania
Agnes A Webster	F	White	44	Married	Wife		Pennsylvania
George Webster	M	White	25	Single	Son		Pennsylvania
Jay E Webster	M	White	22	Single			Pennsylvania
Samuel Webster	M	White	20	Single			Pennsylvania
Joseph Webster	M	White	18	Single			Pennsylvania
Grace N Webster	F	White	16	Single			Pennsylvania
Frank Webster	M	White	13	Single			Pennsylvania
Merl Webster	M	White	5	Single			Pennsylvania

Viola died in 1926, age 51. She was buried in Peterson Cemetery, Cochranon, Crawford County, Pennsylvania.[8]

In the 1930 census, the widowed Henry, now 68 years old, still had Merl, his youngest child at home. Henry was living alone on the Sandy Creek Township farm at the time of the 1940 census. At the 1950 census, Henry was 88 and blind. Living with him were lodgers who were probably looking after him. Henry died on 24 May 1954 in Meadville, Crawford County, aged 92. He was interred alongside Viola in Peterson Cemetery.

13 Mary Jane **Webster** (Samantha², Ebenezer¹). Born 17 Aug 1863 in Fairfield, Crawford County, Pennsylvania. Died 18 Jun 1904 in Preston Township, Adams County, Wisconsin.

Mary Jane, the oldest of the three daughters of Byrum Webster and Samantha Louise Luther who lived to adulthood, was supposedly born 17 Aug 1863. No known record, however, seems to have the exact day and month that she was born. The birthdate is perhaps derived from Webster records or a family Bible.

Mary Jane first shows up in official records in 1870, at the federal census for Fairfield Township, Crawford County, Pennsylvania. She is six years old and living with her family. At the next census, 10 years later, we would have expected the 16-year-old Mary Jane to have still been with her family. Instead, she appears in the federal census for Preston, Adams County, Wisconsin. She is living as a boarder with the Payne family, whose son Bryon she would marry the next year. Before 1880, Bryon and his family had been living in Crawford County. Chances are that Mary Jane became engaged to Byron when she was under the marriageable age of 16 and, because the Paynes were moving to Wisconsin, Mary had to travel with them so that she could be married as soon as it was legal.¹⁶

She married Byron **Payne**, the son of Alonzo Wells **Payne** and Phoebe Keziah **Pierce**, on 1 Jun 1881 in Adams County, Wisconsin. Born 20 May 1854 in Groton, Tompkins County, New York. Died 1921 in Adams County, Wisconsin. Children:

- 60 i. Frank Martin⁴.
- 61 ii. Melvin Alonzo.
- 62 iii. Blanche May.
- iv. Merton Earl. Born 7 Mar 1899 in Preston, Adams County, Wisconsin. Died after 1920.

Mary Jane was 16 and Byron was 27 at the time of their marriage. After this, the new family disappears from official records for 19 years. When we find them next, at the 1900 census, Mary Jane is 37 and all her children have been born. She and Bryon were living in Preston & Big Flats township, Adams County, Wisconsin. Bryon's father had died, and his mother was living with them. In the 1905 Wisconsin state census, the son oldest son, Frank Martin, has moved out of the house. He had married in 1903 and set up housekeeping with his wife Frances Phoebe and her children from a previous marriage. Frank and Frances were

¹⁶ Twenty years earlier, Mary Cline had done a similar thing with the family of Mary Jane's uncle Henry Luther—Mary had moved to Illinois with her future husband's family while waiting to reach a marriageable age.

living in the next county to the east (in Plainfield Township, Waushara, County, Wisconsin), about 15 miles away from his parents. At the last census where we see Bryon and Mary Jane together, the one five years later in 1910, all of the children except for the youngest, Merton Earl, are out of the home.

Mary died in 1915, age 51. She is buried in Mount Repose Cemetery, Friendship, Adams County, Wisconsin. In the 1920 census, the youngest son is still living with the widower Byron. Byron died the next year, age 69. He was buried beside Mary Jane.

14 Clarissa Aurora **Webster** (Samantha², Ebenezer¹). Born 17 Jun 1871 in Fairfield, Crawford County, Pennsylvania. Died 19 Aug 1949 in Meadville, Crawford County, Pennsylvania.

Clarissa was the last child of Byrum Webster and Samantha Louise Luther. In the 1880 census, the eight-year-old Clarissa was living with her family in Fairfield Township, Crawford County, Pennsylvania. When Clarissa was 20, she wed the son of a farmer in the same township who was seven years older than she was.

She married George W **Grove**, son of Daniel **Grove** and Barbara **Augustine**, on 1 Oct 1891 in Crawford County, Pennsylvania. Born 20 Jun 1864 in Fairfield Township, Crawford County, Pennsylvania. Died in 1910 in Fairfield Township, Crawford County. Children:

- 63 i. Alta Bernice⁴.
- 64 ii. George Lee.
- 65 iii. Mary Elizabeth.
- 66 iv. Evelyn May.

George and Clarissa would have a steady succession of children during the decade after their marriage. They purchased farmland. A Meadville Newspaper, *The Evening Republican*, reported in 1896 that George Grove had almost completed his farmhouse and was ready to move in. By the time of the 1900 census, Clara and George were living on their own (but mortgaged) farm. The 1910 census shows all four children still living at home.

The family would soon begin to break up. George died in 1910, according to the date on his tombstone in the Trinity Reform Zion Cemetery in Custards, Fairfield Township, Crawford County.¹⁷ The oldest three of the four children would marry and start their own families in the 1910s. At the time of the 1920 census, Clara was still on the home place and managing the farm, which was now mortgage-free. Only her youngest daughter was still with her. But in 1930, Clara was no longer on the farm. She was a housekeeper for J.P. Hanes, a farmer who lived in the same township.

Clara's whereabouts in 1940 are unknown. She died on 19 Aug 1949 in Meadville, Crawford County, aged 78, and was buried in Roselawn Memorial Gardens in that city.

¹⁷ The death of George is mistakenly reported on many Ancestry.com trees as 30 Mar 1910, but this cannot be—George was alive when his family were enumerated for the 1910 census on 16 Apr 1910.

15 George Austin³ **Luther** (Henry Lousern², Ebenezer¹). Born 23 Mar 1861, in Warren County, Illinois. Died 30 Aug 1928, in St. Paul, Nebraska.

George, the oldest of Henry and Elizabeth Luther's children, would have been the only one of the siblings to have significant memories of the Luther stay in Illinois and of his grandfather Ebenezer. About the time he turned nine, he moved with his parents, some of his parents' siblings, his grandmother, and George's five younger brothers and sisters from Illinois to Brown County, Kansas.

Within about 18 months, the Henry Luthers, along with Henry's mother, moved to a homestead in Saline County, Nebraska, to a farm halfway between the towns of Friend and Wilber. We find George there on the 1880 census, age 19.



From left to right, George Luther, Willie, Earl, Mahulda and Nancy Moore Luther

He married Nancy Alice **Moore**, daughter of Columbus **Moore** and Mahulda **Mullett**, 3 Feb 1883.¹⁸ Born 21 Apr 1868, in Waterloo, Ohio. Died 30 Jul 1914, in Broken Bow, Nebraska.

Children:

- 67 i. Mahulda⁴.
- 68 ii. William Austin.
- 69 iii. Earl.
- 70 iv. Emma Marie.
- 71 v. Jennie Alice
- 72 vi. Eva Ruth.

¹⁸ Date based on marriage certificate in Saline County, Nebraska.

George and Nancy, say the family histories, were married at her stepfather's house by Joe Dickson, Justice of the Peace. The parents, following an old custom, gave an infare/infair dinner after the wedding.

George appears in 1888 in the Solomon Butcher picture. Nancy is not present. Later that year, Henry and Elizabeth and the children move to South Dakota for two years. There is no evidence that George and Nancy were part of this move.

About 1894, a bad drought gripped Nebraska, and the Henry Luther family, along with George and Nancy and their children (now numbering three) moved to Brown County, Kansas, so that the men could find work in the new gypsum mines opening up there. In 1895, George and Nancy appear on the Kansas state census.



George and Nancy Luther

George and Nancy return to Nebraska before Henry and Elizabeth and their family. Their oldest daughter, Mahulda, had married in Kansas and died a few days after giving birth to her first child. In the 1900 census, George and Nancy are living in Douglas Grove, Custer County, Nebraska, in a rural area between Comstock and Weissert. All of their children except Ruth have been born. In 1910, George and Nancy were residing near Ansley, Nebraska. Only the last three children—Emma, Jennie, and Ruth—were still at home.

Nancy died on 30 Jul 1914 in Broken Bow, Nebraska, age 46. At the time of the 1920 census, George was living with his son Earl in North Platte, Nebraska. In later years George suffered from rheumatism. He died on 30 Aug 1928 in St. Paul, Nebraska. He was buried in the cemetery in Broken Bow, Nebraska.

George and Nancy Luther and family about 1904



From left to right: Helen McGill (later Moody), Emma Luther McGill, George Luther, and his mother Elizabeth

16 James Harvey. Born 7 Dec 1862, in Warren County, Illinois. Died 9 Sep 1940, in Broken Bow, Nebraska.

James was born in 1862 in Warren County, Illinois. He remained a lifelong bachelor and had no children.

James moved to Brown County, Kansas, with his parents just before the 1870 census. A year and a half later James moved with his parents to Saline County, Nebraska, to a farm located halfway between the towns of Friend and Wilber. On the 1880 census, he is 12 years old.

James traveled to Ft. Laramie, Wyoming, and enlisted on 11 April 1888 in the US army. He served in the 7th Regiment of Infantry, Company F. At the time of his enlistment, he put his residence down as Wilbur, Nebraska. He was described as having brown hair, blue eyes, ruddy complexion, 5 ft 6 in tall. He was honorably discharged on Oct 15 of the same year.



James Luther gravestone

In 1910, age 47 and still single, James was renting a farm near Westerville, about 15 miles east of Broken Bow, in Myrtle Township.

James was admitted to a veteran's hospital in Hot Springs, South Dakota, on 30 Aug 1928. He stayed there 9 months. His ailments were listed as a deviated septum, teeth cavities, gum disease, an umbilical hernia, enlarged prostate, and feet bunions.

One memory of James passed down in the family that James would, in last half of his life, show up and stay for extended periods with his siblings. He brought with him, when he traveled, a broom-making machine. He used it to make brooms, and he would sell the brooms for enough to keep him fed.

On the 1940 census, James was living in Broken Bow, next to his nephew Omer Luther. He said on the census that in 1935 he had been living in Mason City.

James died on 9 Sep 1940 and was buried in the Broken Bow, Nebraska cemetery. The government paid for a military headstone. His obituary notes that he was a member of the Church of God and regularly attended Sunday school and church.

17 Albert Henry³ **Luther** (Henry Lousem², Ebenezer¹). Born 4 Mar 1866 in Warren County, Illinois. Died 6 Oct 1943 in Broken Bow, Nebraska.

Albert moved to Custer County with his father's family in 1884. During the summer of 1887, Albert and his younger brother Jesse took jobs outside of Custer County. They were together all that summer and into the fall. It was during this summer that Albert and Jesse met the two Davis sisters, who they were later to wed. When the two brothers asked the father of the Davis sisters, Charles Davis, for permission to marry, they were refused. Although Polly, who eventually married Albert, was eighteen, Anna, who was to marry Jesse, was only fourteen. As the story goes, Jesse and Al were to drive some of the Davis's stock from Wilber to Custer County and Charles and his family (including the two sisters) were to take the train. As the train was leaving the station, the two girls were standing on the rear platform. Al and Jesse were hidden behind a building, mounted on horses. The boys rode up alongside the train and attempted to take the girls from the train. Polly made it, but Anne was grabbed by her father before she could escape. The boys and Polly brought the stock to Custer County. Henry and Elizabeth and their family, already in Custer County, were making preparations for the move to South Dakota. Somehow Al and Jesse convinced the father of the two sisters to allow the girls to go to South Dakota with the Luthers. There they were married to the two boys in a double ceremony.

Albert and Polly lived near Oelrichs, South Dakota, until the spring of 1891, when they moved back to Custer County. They moved to Blue Rapids, Kansas, in 1894, and returned to Custer County in the fall of 1897 in a covered wagon. It was so cold that Polly kept a stove



Albert Luther, about age 30

burning in the wagon while Albert drove the team. Somewhere between the Nebraska towns of Hazard and Litchfield the wagon hit a rut and the burning stove fell over, igniting both Polly's dress and the blankets of the four-month old Ernest Ellsworth. Albert put out the fire with his coat and the wagon covering. Both Polly and the baby were badly burned. Albert drove to Litchfield, where a Catholic convent took in the baby and mother and cared for their burns. Polly and young Ernest recovered after some months, but the boy had an ear burned completely off and his face was scarred. Polly was also scarred, but the burned areas were covered by clothes, so the burns were not so easily noticed. Albert, who had gone on to Dry Valley in Custer County, returned for his family as soon as they were able to travel.

In 1901, Polly and Al moved from Dry Valley to Weissert, Nebraska, and lived there on a farm for seven years. In 1908 they moved to Broken Bow, Nebraska, where they lived for the remainder of their lives. Albert operated several different grocery stores. He also ran a dray service for a short period of time and tried his hand at the trucking business during the early 1930s. Albert had become a member of the Church of God while living with his parents in Saline County, Nebraska, and he continued with the church for the rest of his life. From 1910 to about 1918 he preached for the Church of God. Albert always rented vacant lots for gardens, and raised large amounts of vegetables throughout his life, even while living in a town.

He married Polly Eva **Davis**, daughter of Charles **Davis** and Sarah **Wayne**, on 3 Feb 1888 in Oelrich, South Dakota. Born 29 Sep 1870 in Wisconsin. After Albert died, Polly married S.E. **Lewis** of Broken Bow, Nebraska, on 26 June 1950. Polly died on 5 Oct 1954, in Broken Bow, Nebraska. Children:

- 73 i. Lucy Eva⁴.
- 74 ii. Edna Ellen.
- 75 iii. Golda Mae.
- 76 iv. Ernest Ellsworth.
- v. Ethel Alice. Born 26 Jul 1899, in Dry Valley, Nebraska. She married, first, Bub **Levin**, 12 Sep 1935, in Omaha, Nebraska, USA. She married, second, Bud **Seben** in Sioux City, Nebraska.
- 77 vi. Anna Bell.
- vii. Palis Paul. Born 9 Dec 1903, in Weissert, Nebraska. Died 9 Nov 1904, in Weissert, Nebraska.
- 78 viii. Charles "Chuck" Henry.
- ix. Lela Alberta. Born 3 Mar 1910, in Broken Bow, Nebraska. Died 28 Mar 1912, in Weissert, Nebraska.

18. Jesse Andrew³ **Luther** (Henry Lousern², Ebenezer¹). Born 16 Dec 1867 in McDonough County, Illinois. Died 5 Nov 1961 in Ainsworth, Nebraska.

At the age of two, Jesse moved from Illinois to Brown County, Kansas with his parents, just before the 1870 census. A year and a half later Jesse moved again with his parents to Saline County, Nebraska, to a farm located halfway between the towns of Friend and Wilber. He appears in the school records in Saline County and on the 1880 census. He transferred to Custer County, along with his father's family, in 1884.¹⁹



The story of how Jesse and his older brother Al met and married two of the Davis sisters is told in the entry for Albert in this summary.

Captain Jesse Luther of the Salvation Army, wife Anna Belle, and his family about 1903, the year before Anna died.

He married Anna Bell **Davis**, daughter of Charles **Davis** and Sarah **Wayne**, on 3 Feb 1888 in Oelrich, South Dakota. Born 2 Jan 1874 in Wisconsin. Died 12 Aug 1904 in Weissert, Nebraska. Children:

- i. Infant Son⁴. Born 13 Apr 1890, in Olerich, South Dakota. Died 13 Apr 1890, in Olerich, South Dakota.
- 79 ii. Pearl May.
- 80 iii. Ethel Grace.
- iv. Emma. Born 1894. Died young?
- 81 v. Jessie Lea.
- vi. Palace Ray. Born 10 Apr 1898, in Blue Rapids, Kansas. Died 12 Apr 1898, in Blue Rapids, Kansas.
- 82 vii. Anna Rosetta.

¹⁹ Data in this entry on Jesse is from the family history and from the various censuses in which Jesse appears. Exact citations of the census data can be found on the author's Ancestry.com family tree and on WikiTree (at <https://www.wikitree.com/wiki/Luther-2712>)

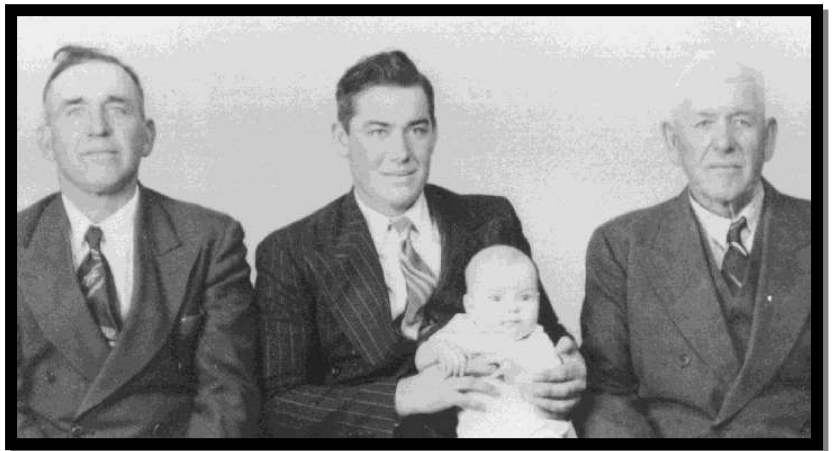
After their marriage, Jesse and Anna Belle lived near Oelrichs, South Dakota, until the spring of 1891, when they moved back to Custer County. The parents' family and Jesse and Anna moved to Blue Rapids, Kansas, in 1894, seeking work in the gypsum mines because a drought had made farming difficult. Jesse and Anna are found in Blue Rapids, Kansas, on the 1895 state census with their three children, all age three and under. Jesse is said to be a "day laborer." By 1900, a fourth child has been Born but Jesse and Anna still have three children—one of them (Emma) is missing, probably deceased.

In the years between 1900 and 1904, the family history says, Jesse worked with the Salvation Army, serving as minister to many congregations. Five years later, on the 1905 Kansas state census, Anna is missing. She died in 1904, only a year after her youngest daughter was born. Jesse and his four children are still in Kansas, but they have relocated a hundred miles south, to Marion, Kansas.

The 1910 census finds the family back in Nebraska, near Westerville. Living with Jesse in his house is a 27-year-old woman, Stella Harvey, and her 6-year-old son. Called a "servant" in the census, she was presumably a housekeeper hired to look after the children. Jesse is renting a farm, but the family history says that he was in the freighting business in these years.

In 1913, Jesse took out a Kincaid homestead claim in Cherry County. At some point, however, he returned to Custer County. Jesse and the children who were still at home stayed in Custer County until after 1935,

when they move back to Goose Creek in Cherry County. On the 1930 and 1940 censuses, Jesse is living with his son, Jesse Lea Luther. In 1943, Jesse moved to Ainsworth, Nebraska, where he remained for the rest of his life. He died on 4 Nov 1961 and was buried in Ainsworth Cemetery, Ainsworth, Nebraska. He was a member of the Mission Baptist Church in Cherry County, Nebraska, at the time of his death.



Four generation picture: Lee, Harold, Wesley (?) and Jess Luther, from left to right.

19 Arthur Franklin³ **Luther** (Henry Lousern², Ebenezer¹). Born 9 Feb 1870 in Brown County, Kansas. Died 1 Jul 1951 in Broken Bow, Nebraska.

Arthur was the only one of Henry and Elizabeth's children to be born in Kansas. He came into the world during their brief stay in Brown County, between the family's sojourn in Illinois and the later move to Saline County, Nebraska. Arthur grew up on the farm in Saline County, Nebraska, and moved with his parents, as a lad of fourteen, to Custer County, Nebraska.

When he was twenty, Arthur married Ella Etta, one of two daughters that the Civil War Veteran John W. Ruckle had brought to Custer County in the 1880s. Arthur's first son, Omer Kem (generally known later in life as O. K.), was born in a sod house near Mason City, Nebraska, in 1890. In the month that O.K. was born Nebraska was in political turmoil. The crops had failed and farmers were blaming the railroads and Eastern money for robbing them of fair profit on their labor. The Populists, a new party representing farm interests, had fielded a large slate of county and state candidates in the elections that fall. When word reached Custer County that Omer Madison Kem, running for Congress from the district including Custer County, had been elected as the first Populist state representative, the town square in Broken Bow was the scene of bonfires, parades and wild celebrations. A few days later Ella Ruckle Luther gave birth to her first son, and, caught up in the excitement of political change, Arthur and Ella named their first child Omer Kem after the new representative. O.K. Luther was not alone in this curious distinction, and throughout his life Omer continued to hear of other O.K.s born in Nebraska's decade of populism.



Arthur and Ella Luther and the infant Omer Kem. About 1891.

The farmers' hopes for a Populist national government were soon turned to disappointment, however, and the fortunes of Arthur's new family also took a turn for the

worse. When O. K. was only two years old, his mother Ella, Ella's second child, Ella's sister and her father--the whole Ruckle family--died in a tragic bout of dysentery. O. K. and his father moved in with his grandfather's family.

A drought in Nebraska in 1894 forced Arthur and his father's family to relocate to Kansas to find work in the gypsum mines. Arthur remarried in Kansas in 1896 to Mary Jane Phelps, and began a new and larger family. He and Mary Jane moved back to Nebraska in 1897.

The next major move was in 1911, when several of the Luthers took advantage of the Kincaid Act to obtain homestead lands along Goose Creek in the Nebraska Sandhills. Arthur eventually owned several sections of Sandhill land and grazed over 500 sheep. Arthur, Mary Jane, and their family lived in three different places in the Sandhills. In 1916 Arthur and



Mary Jane returned again to Custer County. At first they lived on the Sigman land that their son O.K. had inherited from the Ruckles. Later they purchased and lived on what was known as the Harmon Place. On this land was a large, established orchard occupying five acres on each side of the road. The Arthur Luthers built a cement block house here, now torn down. Arthur lost this place in the depression. After the 1937 sale he had \$1100, which he used to buy a farm on Highway 2 known as the Darnell Place. This place he farmed initially with horses, having sold all of his machinery when he lost the Harmon Place.

About 1950, following an accident in which his pelvis was broken, Arthur came to live with his son O.K. He was diagnosed with colon cancer not long after this and died in a bedroom on O.K.'s ranch west of Broken Bow. Mary Jane

Arthur and Mary Jane Luther, with children Ella, Leon, and Violet, and Omer Kem, Arthur's son.

continued to live with Violet and Cliff, at first on the farm, and later in Broken Bow. She died in Violet and Cliff's house in Broken Bow.

He married, first, Ella Etta **Ruckle**, daughter of John W. **Ruckle** and Irena **Harriman**, on 15 Jun 1890 in Custer County, Nebraska. Born 27 Aug 1874 in Blue Earth County, Minnesota. Died 8 Sep 1892 in Mason City, Nebraska.

Children:

- 83 i. Omer Kem⁴.
- ii. Earsey. Born 28 Feb 1892, in Mason City, Nebraska. Died 12 Oct 1892, in Mason City, Nebraska.

He married, second, Mary Jane **Phelps**, daughter of George Washington "Yankee" **Phelps** and Mahanna **Reed**, on 16 Dec 1895 in Marysville, Kansas. Born 20 Feb 1880 in Derby County, Indiana. Died 4 Sep 1968 in Broken Bow, Nebraska. Children:

- 84 iii. Ella Valena.
- 85 iv. Leon Alvin "Babe".
- v. Vida Violet. Born 28 Apr 1903, in Mason City, Nebraska. Died 18 Jul 1975, in Broken Bow, Nebraska.
- 86 vi. Marvin Arthur.
- 87 vii. Patrick Anson.
- viii. Clifford Clayton "Bub". Born 29 Jul 1910, in Mason City, Nebraska. Died 25 December 2003 in Broken Bow, Nebraska



Siblings: Arthur, Katie, Bertha, and Jess Luther in later years.



Arthur Luther's children, about 1910. Clockwise from noon, Ella, Omer, Marvin, Leon, Patrick, Violet.

20 Leon Ellsworth³ **Luther** (Henry Lousern², Ebenezer¹). Born 25 Jan 1872 in Saline County, Nebraska.²⁰ Died 5 Mar 1942 in Los Angeles, California.

The family history only provides basic data about Leon and his family—not any personal stories.²¹

From genealogical records, we learn that Leon stayed with his parents, Henry and Elizabeth, until he was almost 30 years old. He was born not long after Henry and Elizabeth had moved from Kansas to Saline County, Nebraska—the first child in the family born in Nebraska. By the time Leon was 12 (in 1885), the family had moved to Custer County. They spent a couple of years in South Dakota, then returned to Custer County. Then, in the early 1890s, dealing with the crippling effects of a drought, the family moved back to Kansas so that the men in the family could work in the gypsum mines. In 1895, Leon was boarding in Kansas with his aunt, Mary Brown. In 1900, Leon, then age 29, was part of his parent’s household in Blue Rapids, Kansas.²² He is listed in the 4 September 1902 *Blue Rapid Times* as a travelling representative for the Salvation Army, covering Iowa and Nebraska. Where he is living, however, is not mentioned.

Leon married Anna Christena **Johnson**, 25 Oct 1903, in Omaha, Nebraska. Born 27 Jul 1882, in Oakland, Nebraska. Died 11 Dec 1925.

Leon perhaps met Anna, who was from Oakland, Nebraska, a town northwest of Omaha, when he was on one of his Salvation Army rounds. (On the 1900 census, the 17-year-old Anna is listed in the home of her stepfather as a “Salvation Army worker,” so the Army may have been responsible for them getting to know each other.) Anna and Leon seem to have moved soon after their 1903 marriage to Omaha, where Leon took a job with the post



Leon and Anna Christena Luther

²⁰ 1900 Kansas federal census says May 1871.

²¹ It would be interesting to know where the name “Ellsworth/Ellworth” comes from. It will be replicated several times in the Luther families.

²² Data on where Leon lived is from the 1880 and 1900 Federal censuses and the 1885 Nebraska and 1895 Kansas state censuses.

office. The couple were still in Omaha in 1910, but by 1920 they resided in Rogers in Colfax County, Nebraska, a town about 20 miles west of Omaha along the Platte River. Leon was still working for the post office. Anna's mother, Hannah Belknap,²³ lived with Anna and Leon from about 1910 on.

All five of Leon and Anna's children were born by 1919. Six years after the birth of the last child, Anna died of Bright's Disease following an extended illness.²⁴ Where Leon and the family went after Anna's death is unknown, but by 1938 Leon was living with his daughter Dorothy in California. He died there in 1942 at age 70.

Children:

- 88 i. Evangeline Mae⁴.
- 89 ii. Dorothy Lucille.
- 90 iii. Donald Elsworth.
- iv. Vernon Leon. Born 3 May 1914, in Omaha, Nebraska. Died 22 Aug 1945, in LeHavre, France (Died in WWII).
- v. Grace Winnifred. Born 5 May 1919, in Omaha, Nebraska. She married, first, William **Morgan**, 29 Mar 1937. She married, second, Wayne **White**.



Leon and Cora Luther in their Salvation Army years

²³ Born Hannah Laurene Fleck. She married Andrew Johnson, Anna's father, and then Albert Belknap after Andrew died.

²⁴ Her malady is recorded in the family history. The extended illness is mentioned in Anna's obituary. The rest of the data about Anna is from the Federal censuses.

12-21. Ida Alice³ **Luther** (Henry Louse², Ebenezer¹).
Born 21 Sep 1874, in Saline County, Nebraska. Died 7 Jul 1966.

Henry and Elizabeth's large family of fourteen children falls into two groups. The first half were almost all boys, the second half girls. Ida, arriving as the first member of the second group, was the first girl to live past her teen years.



Ida Alice Luther, about fourteen

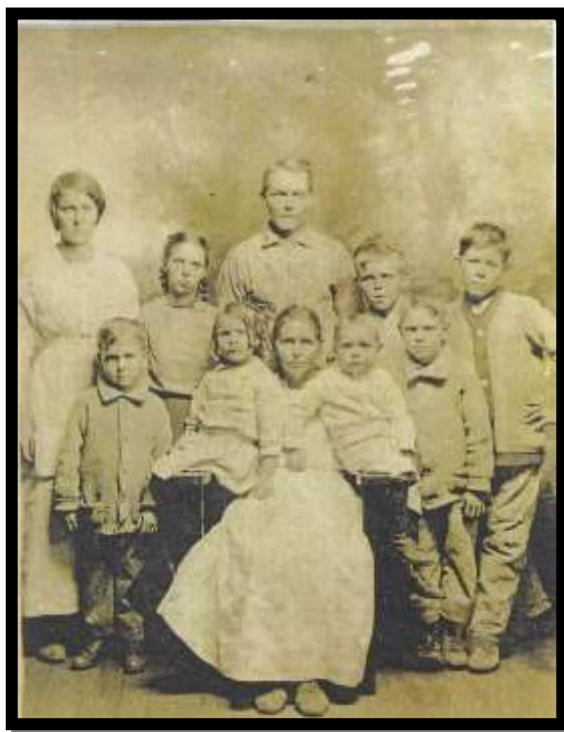
Censuses in 1880 and 1885, the first in Saline County, Nebraska, and the second just after their move to Custer County, Nebraska (about 1884), show Ida living with her family. She also appears in the 1888 Custer County picture by Solomon Butcher. Soon after this picture was taken, the Luther family moved for a few years to South Dakota. They were joined in South Dakota by William Samson Barclay, a man from Altoona, Pennsylvania. William had arrived in Saline County sometime before 1885 and probably got to know the Luthers there. Did he perhaps work for them? Did he make the move to Custer County with them? No story the family's initial interaction with the young William has been preserved. In any case, he soon became part of the family—the twenty-four-year-old William and the sixteen-year-old Ida were wed in South Dakota.

Ida married, first, William Samson **Barclay** Sr, 3 Aug 1890, in Oelrichs, South Dakota. Born 13 May 1866, in Altoona, Pennsylvania. Died 31 Oct 1915, in Lonoke, Arkansas. Children:

- 91 i. Henry McQuade⁴.
- ii. Elizabeth Bell. Born 25 Jul 1892, in Custer County, Nebraska. Died 1976. She married John **Wilson**, 4 Sep 1922.
- iii. William Samson Jr. Born 14 Jan 1894, in Ansley, Nebraska. Died 13 Nov 1918, in Lonoke, Arkansas.
- iv. Rossie Washington. Born 18 Dec 1897, in White Oak, Oklahoma. Died 19 Jun 1898, in White Oak, Oklahoma.
- v. Mary Geraldine. Born 4 Aug 1899, in Oklahoma. Died 16 Sep 1984. She married Orrie **Hester**, 6 Sep 1920, in Lonoke, Arkansas. (Mary and Orrie adopted three children.)
- vi. Lee Louse². Born 16 Aug 1901, in Arkansas. Died 7 Sep 1919, in Lonoke, Arkansas.
- 92 vii. Elsie Ellen.
- 93 viii. Ernest Lester.

- ix. Noble Edward. Born 5 Feb 1907, in Blue Rapids, Kansas. Died 12 May 1995. He married Eula Marie **Roach**, 28 Mar 1929, in DeValls Bluff, Arkansas. (They had at least four boys and four girls not recorded in this genealogy.)
- 94 x. Richard Howard.
- 95 xi. Elnora Mae.
- 96 xii. Donald Robert.

William and Ida's first child, Henry McQuade Barclay, was born in South Dakota. The family returned to Custer County soon after 1890. Presumably William and Ida Barclay came with them, because their second child, Elizabeth Bell Barclay, was born in Nebraska. A drought hit central Nebraska in the early 1890s, and Ida's parents and siblings moved to Kansas to find work in the gypsum mines. William and Ida eventually moved to Kansas, but they may not have moved there when the Luthers did. We do not find them on an 1895 Kansas state census or the 1900 federal census. A son born to William and Ida in 1896 (William Sampson Barclay Jr) and a daughter in 1899 (Mary Geraldine Barclay) claimed Nebraska as their birthplace. A son born in 1901 (Lee Lousern Barclay) said that he came into the world in Oklahoma. In 1905, we finally find William and Ida in Kansas. They are in Blue Rapids, Kansas, for the 1905 state census, and they have six children. They are still in Blue Rapids at the 1910 federal census, and they now have nine children. The next year, 1911, a daughter was born in Blue Rapids (Elnora Mae Barclay). After this, William and Ida and the children began to move east. A son (Donald R. Barclay) was born in Kansas City. By 1915, the family had made it all the way to Lonoke County, Arkansas. Not long after arriving in Arkansas, however, William died (1915). It is about this time that the photograph of the family shown here, sans William and the two oldest children, was taken. Ida remained in Arkansas for the rest of her life. Most of the children would continue to live there.



Ida Alice Luther Barclay and 9 children, ~1915

Ida and the six youngest children appear on the 1920 census for Lonoke County, Arkansas. The 1930, 1940, and 1950 censuses show that Ida had given up independent housekeeping and was living with her children, first with her daughter Elsie Ellen (1930), then with her son Ernest Lester (1940), then finally with her youngest son, Donald (1950). After raising a dozen children and doing it for some of the time without a husband, one would have expected Ida to take a well-deserved rest. Instead, on 13 Dec 1953, when Ida was almost 80, she married her second husband, Robert Hinton Perry.²⁵

She married, second, Robert Hinton **Perry**, 13 Dec 1953, in Little Rock, Arkansas. Born 3 Jun 1880. Died 8 Jul 1960.

Ida outlived Robert and died on 7 Jul 1967, three years after he did. She was almost 93 years old.

²⁵ This second marriage is recorded in the family history. It is probably based on communication between the Nebraska Luthers and Ida. No documentary evidence for the actual marriage has turned up.

13-22. Martha Rosetta³ **Luther** (Henry Louse², Ebenezer¹). Born 17 May 1877, in Saline County, Nebraska. Died 18 Feb 1894, in Ansley, Nebraska.

Censuses in 1880 and 1885, the first one in Saline County, Nebraska and the second just after Henry and Elizabeth moved to Custer County, Nebraska (about 1884), show Martha living with her family. She also appears in the 1888 Custer County picture by Solomon Butcher.

She married Isaac Evans **Melvin**, son of John Wesley **Melvin** and Lydia **Adams**, 13 Nov 1892, in Broken Bow, Nebraska. Born 7 May 1871 in Western, Saline County, Nebraska. Died 23 June 1931 in Bridgeport, Nebraska. Children:

- i. Lulu Mae⁴. Born 1893. Died 17 Feb 1894, in Ansley, Nebraska.

Isaac and his family lived in Saline County—Isaac was born there. A year after the marriage, Isaac and Martha had one daughter, Lulu Mae Melvin. The daughter died the next year, and Martha died one day later, on 18 February 1894, in Ansley, Custer County, Nebraska. She was just sixteen years old.

About two years later, Isaac married Charlotte Meeks and had several more children.



Martha Rosetta Luther, about eleven

23 Cora Louisa³ **Luther** (Henry Lousern², Ebenezer¹). Born 19 Apr 1881 in Saline County, Nebraska. Died 7 Sep 1935 in Goff, Kansas.

Cora, the third daughter of Henry Luther and Elizabeth Cline, was born in 1881. Cora appears in the 1885 census, at age four, in Algernon, Custer County, Nebraska. At around age seven, she is in the Solomon Butcher homestead photo of the Henry Luther family that was taken in Algernon.

When Cora was about eight or nine, The Luther family moved to South Dakota and remained there for a couple of years. The family returned to Custer County in late 1890, but stayed only a few years. A drought that hit central Nebraska in the early 1890s caused Cora and her parents and most of her brothers' families to move to Kansas, where the men sought work in the gypsum mines. She would have been in her early teens when she moved to Kansas.

Cora and Melvin Carpenter



At age 17, Cora married another 21-year-old Kansas resident, Melvin Shepard Carpenter, on 3 Jan 1899 in Marshall, Kansas. Melvin was the eighth of twelve children in a large family. His parents, immigrants from Kentucky and Georgia, met and married in Kansas in 1866.

Cora married Melvin Shepard **Carpenter**, son of William Zopher **Carpenter** and Margaret Julina **McNabb**, on 3 Jan 1899 in Marysville, Kansas. Born 16 May 1877 in Sabetha, Kansas. Died 20 Apr 1936 in Kansas City, Kansas. Children:

- i. (Infant Daughter)⁴. Born 4 Mar 1901. Died 4 Mar 1901, in Oneida, Kansas.
- ii. (Infant Daughter). Born 23 Oct 1902. Died 23 Oct 1902.
- iii. Julian Mae. Born 18 Oct 1903 in Perkins, Oklahoma. Died 22 Mar 1983. She married, first, Dale **Barker**, on 23 Oct 1925 in Oneida, Kansas. She married, second, Wilhelm Anton **Hunzeker** after 1951.
- 97 iv. Irene Elizabeth.
- 98 v. Carl Melvin.
- 99 vi. Effie Lorena.

- 100 vii. Edgar William.
101 viii. Orma Katherine.

The newly married Melvin and Cora moved to Oklahoma in the first decade of the twentieth century. Their first two children, both stillborn, arrived while they were still in Kansas, but the subsequent two children, both of whom lived to adulthood, claimed Oklahoma as their birth state (b. 1903 and 1906). By the time the next child was born, though (1909), the family was back in Kansas. At the time of the 1910 census, Cora and Melvin were living in a farm home that they owned in Rock Creek Township, Nemaha County, Kansas, near the town of Sabetha.

At the 1920 census, Cora was 38. All six of her surviving children had been born. For some reason, Cora and her family, sometime before 1920, moved from Kansas to Idaho. According to one of the grandchildren, the family lived in Idaho from 1913 to 1923. Melvin appears to have rented rather than bought a farm in Idaho. The family was back in Kansas by 1925. Melvin and Cora relocated to a neighboring township, Gilman, that was just west of Rock Creek.



Melvin and Cora Carpenter, with children (l. to r.) Effie, Irene, Edgar (on lap), Juliana, Orma (on lap) and Carl, 1914

The period from 1925 to 1930 must have been a half-decade of great change for Melvin and Cora and their family. Only two of the six children remained at home in the 1930 census—the three oldest girls had married within the space of four years and the 21-year-old Carl had moved out. Also in these years, Cora and Melvin moved again, this time to Gilman township, about ten miles south of where they had been in 1925.

Both Melvin and Cora died in their mid- to late-50s, Cora in 1935, Melvin in 1936. They are buried in Oneida, Kansas, near where they were living in 1925. When the oldest son Carl probated his father's estate, there wasn't much to handle. After the farm was sold and the

debts were paid, only a small sum, about two hundred dollars, was left to divide among the six children.

24 Bertha Elizabeth³ **Luther** (Henry Lousern², Ebenezer¹). Born 27 Aug 1882 in Saline County, Nebraska. Died 15 Nov 1956.

Bertha Elizabeth Luther was born on 27 Aug 1882 in Saline County, Nebraska, the next to last girl in the family. Soon after Bertha's birth, Henry and Elizabeth and their children moved to Algernon Township in Custer County, Nebraska. Bertha appears in the Solomon Butcher photo of the Luther homestead that was taken in early 1888. Later that year, the family packed up and moved to Olerich, South Dakota, and then Hot Springs, South Dakota. They returned to Custer County in late 1890, the eight-year-old Bertha with them. When a drought made farming difficult, the family moved to Blue Rapids, Kansas, so that the men in the family could find work in the gypsum mines. The Luther family would remain in Kansas until 1903. While in Kansas, Bertha joined the Methodist church. At the age of 18, she became a Cadet in the Salvation Army, preached her first sermon, and traveled with Army teams for about three years.



Alvin and Bertha Calhoon with
Stanley and Freeda

Soon after the Luthers returned to Custer County, Bertha met a young man who had grown up in Polk County, Nebraska, but who was then living in nearby Westerville, Nebraska. In 1906, Bertha, then age 23, married the 26-year old Alvin Cary Calhoon at her father's house in Mason City, Custer County, Nebraska.

She married Alvin Cary **Calhoon**, son of Artelus **Calhoun** and Henrietta E. **Robinson**, 1 Jan 1906, in Mason City, Nebraska. Born 14 Jun 1879. Died 5 Nov 1960, in Wichita, Kansas.

Children:

- i. (Infant Son)⁴. Born 7 Sep 1907. Died 7 Sep 1907.
- 102 ii. Freeda Fern.
- 103 iii. Carrol Stanley.

For a few years the couple lived in the Westerville area, around Weissert, Nebraska. In 1907, Bertha joined the Free Methodist church and received an Evangelist license (and eventually became Deaconess). The couple soon moved to southern Logan County, near the towns of Gandy and Stapleton. We see them there on the 1910 federal census.



Alvin and Bertha Calhoon

In 1907, according to the family history, Bertha supposedly gave birth to a stillborn child.²⁶ Four years later, they acquired a daughter they named “Freeda Fern.”²⁷ While they were in Weissert and Stapleton, Alvin was farming on his own land. In 1913, they moved to Alberta, Canada, probably to take advantage of the homesteads being offered by the Canadian government. That same year, Alvin and Bertha adopted a Canadian baby boy and named him “Carrol Stanley.”²⁸ They returned to the United States in 1921.

About the time that they moved to Canada, Alvin felt a call to the ministry. He became a full-time pastor in the Free Methodist Church. Between 1914 and 1925, Alvin held pastorates in churches in Alberta and in Nebraska City and

this child. After Bertha died, Alvin visited his nephew Omer Luther in Broken Bow, Nebraska. Omer knew something about this child and discussed it with Alvin. After Alvin returned to his home, he wrote Omer a letter on 22 Jan 1957. In the letter, Alvin says, “I would like to say something about the baby of Bertha and mine that we talked about. Of course, we thought it was our baby. We have it on our family record. But we never made it a public affair. So it was not put in the obituary. I told you the circumstances when it was born. So I hope you do not think we wanted you to think we did not care anything about it. It was buried in the Gandy graveyard. Now I hope it does not go any further. Keep it under your hat.” [spelling corrected] One wonders if someone that Alvin and Bertha knew gave them a newborn baby to raise, but the baby did not survive.

²⁷ It was widely believed in the family that this was an illegitimate daughter of Bertha's younger brother Walter that Alvin and Bertha agreed to raise. Or at least a child that the mother claimed was Walter's. My mother knows a family story that says the mother was named Evans. What the facts are behind this belief are hard to discern.

²⁸ As with the other two children, mystery persists. The adoption was known within certain Nebraska branches of the Luther family, but it is not clear how public this knowledge was. None of the children of Alvin and Bertha seem to have been acquired through any formal process, and stigmas around adoptions in the early twentieth century—even when acquired through legal adoption—often caused families to conceal the circumstances that brought the children into the family. As of 2024, about fifty persons who have taken the Ancestry autosomal test show up on a chart of genetic descendants of Henry Luther. These fifty represent descendants of all of the children of Henry and Elizabeth who have living descendants *except* Katie and Bertha. In Katie's case, probably no one has tested—she has only a handful of living descendants. But the absence of any of Bertha's genetic descendants from the chart—descendants of Carrol Stanley and Freeda Fern may number many dozens—is unusual.

Bayard, Nebraska. After this, Alvin worked at other jobs, but continued to fill pulpits when and where he was needed. One of his first post-ministry jobs seems to have been in Crooked Creek, Meade County, Kansas—he and the family are there in the 1925 Kansas state census and Alvin is listed as a “laborer.” They soon returned to Nebraska. In 1930, they show up on the 1930 census in Frontier County, Nebraska, near the village of Muddy. Alvin was renting a farm and working it.

Both children married in the 1930s and left home. In 1939, Alvin and Bertha rented a farm near Cambridge, Nebraska. We see them there on the 1940 and 1950 censuses. Alvin and Bertha retired from farming in 1954 and moved into Cambridge. Bertha died there on 15 Nov 1956, age 74. Alvin stayed on in Cambridge for a few years, then moved in with the family of his daughter Freeda, who had recently moved to Wichita, Kansas, in 1958. Alvin died on 5 Dec 1960.

25 Katie Jane³ **Luther** (Henry Lousern², Ebenezer¹). Born 28 Oct 1885 in Custer County, Nebraska. Died 3 Feb 1963.

In the 1888 Solomon Butcher picture, Katie is about three years old. In the background is the sod house in which she was born, the thirteenth of Henry and Elizabeth's fourteen children. Katie was probably still three when she moved with her family to Oelrichs, South Dakota. During an Indian uprising the family moved into Hot Springs for protection. The



Frank and Katie Luther McQuiety,
with Phebe (on lap) and Carl.

story has come down in the family how Katie and some of her siblings were playing down a road from their home when they thought they heard an Indian making a noise in a plum thicket. All of the children ran home as fast as they could. Katie and the other little ones were yelling "Wait! Wait!" but no one slowed down.

The family returned to Nebraska, then went on to Blue Rapids, Kansas, as described above in the section on her father Henry. In 1901, while still in Kansas, the sixteen-year old Katie joined the Salvation Army. The Army then (and even now to some extent) were bands of people who travelled to places holding religious meetings in tents, churches, parks, or anywhere else that was suitable. The band that Katie was part of operated in Kansas and Nebraska. In April of 1903, she took a furlough from the Army and spent time with her sister Bertha, at one point taking work for \$3.00 a week. When she

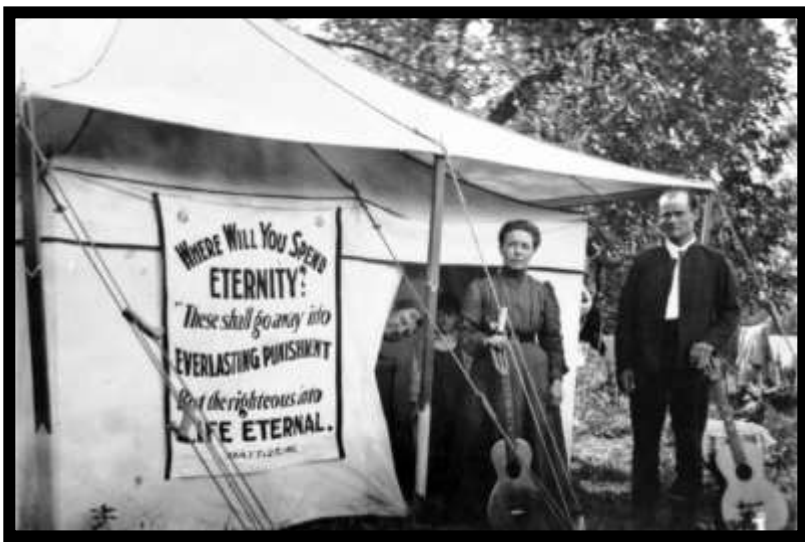
rejoined the Army in October of that year she did not have enough money to make the trip to the camp. Starting off with 50 cents, she stopped at a hotel that cost her a quarter, leaving her with only 25 cents toward the \$1.09 needed for the next fare. A depot agent loaned her the balance, a loan she later repaid. All she had to eat for the trip were four cookies, which cost her one cent each.

Katie's brother Jess and his family were also in the Salvation Army. When Jess's wife died in August of 1904, Katie travelled the circuit with him to take care of the four youngest children. When Jess left the Army in October 1904, Katie left with him, but she returned to the Salvation Army in July 1906.

In January 1908 Katie and the Salvation Army band arrived in Cambridge, Nebraska. While they were holding meetings in a local Mennonite Church, she met Frank Ulyssis McQuiety. He had lived in Cambridge since age fifteen, when his parents homesteaded there. Frank's family said in his obituary that he was converted in 1908, so Katie and the band may have been instrumental (pun intended) in Frank's conversion. The band then moved seven miles south to Shiloh Church in Red Willow County, where Frank and Katie were married.



Bertha, Cora, Katie Luther (l. to r.)



Katie and Frank McQuiety in their Salvation Army days

Katie married Frank Ulyssis **McQuiety**, son of VanBuren **McQuiety** and Mary Maria **Osborn** (née **Mower**) on 15 Apr 1908 in Cambridge, Nebraska. Born 23 Dec 1869 in Decatur County, Iowa. Died 16 Jul 1955. Children:

- 104 i. Carl Ulyssis⁴.
- ii. Phoebe Irene. Born 15 Mar 1918, in Cambridge, Nebraska. Died 1 Nov 1929, in Cambridge, Nebraska.
- 105 iii. Thelma Lucile (foster daughter).

After their marriage, they stayed with the Army until September 1908. In February 1909, they moved to Belleville, Kansas, to be near Frank's brother. Carl was born during this brief stay in Kansas. They moved back to Cambridge, Nebraska, in October 1909.



Bertha, Cora and Katie Luther (l. to r.)

Once back in Cambridge, Frank took on several kinds of work. One job was for a man named Art Trumble. Frank and the family lived as a tenant in a house on Trumble's farm and worked on the farm for \$45.00 a month. At another time Frank and Katie purchased a small acreage west of Cambridge that cornered Fairview Cemetery on the northeast. Frank built a three-room house (2 rooms down and one up) that they called their "air castle." After March 1915 they lived on three different farms northwest of Cambridge. Phoebe Irene was born in 1920. Although Frank and Katie had purchased their own farm in 1920 for \$4000 (about 10 miles northwest of Cambridge), they sold out after a few years because of Phoebe's health. They bought a new 1923 Model T Ford Touring Car for \$300, rented their farm to Adam Teter, whose daughter would later marry their son Carl, and moved in August of 1923 to Greeley, Colorado. A year later they moved to Phoenix, Arizona. In Phoenix a new schoolhouse was being built at a small place called Cartwright.

Frank took a job painting the schoolhouse for \$5.00 a day and Katie cooked and served school lunches. Frank got the job of custodian after the school was finished. Katie received \$3.00 a day, and Frank \$100.00 a month.

In May of 1926 they moved back to Cambridge to a 160-acre farm. After Phoebe died in 1929, they fostered Thelma Lucile, who was about nine. In August of 1939 they moved to Missouri with their son Carl and his wife Elsie. They lived there on a farm near Phillipsburg, Missouri, until May, 1955. At that point, everyone but Thelma returned to Cambridge, Nebraska. After Frank's death in the summer of that year, and until her own death eight years later, Katie lived with Jess's daughter, Pearl Baldwin, at Kearney, Nebraska. She died there on 3 Feb 1963 at the Good



Katie (right) and Walter Luther

Samaritan Hospital, age 77. Of the fourteen siblings, only Ida outlived her.

26 William Walter³ **Luther** (Henry Lousern², Ebenezer¹). Born 18 Jul 1887 in Custer County, Nebraska. Died 29 Sep 1937.

William Walter, always known to family and friends as "Walter," was the last child of Henry Luther and Elizabeth Cline. He was born on 18 Jul 1887 at Algernon, Mason City, Nebraska.

Walter appears in the 1888 Solomon Butcher photo of the Luther homestead, sitting on his mother's lap. Later that same year, the family in the photo packed up and moved to Oelrichs, South Dakota, and then on to Hot Springs. They returned to Custer County in late 1890. When a drought made farming difficult, the family moved to Blue Rapids, Kansas, about 1894. The men in the family sought work in the gypsum mines that were opening up there along the Blue River.



Walter and Vera Luther, with
Valarie, Linnie, and Ruby.

The 1900 census for Blue Rapids, Kansas, which has an entry for the Luther household, does not include the 13-year-old Walter. The first place he appears in any official record is in 1910. On the census for that year, the 23-year-old Walter was back in Nebraska and was staying with the Omer Luther family. Omer and Walter, though nephew and uncle, were only three years apart in age. They were close companions until Walter's death.

Three years after the 1910 census, Walter married Vera Elaine Milks.

He married Vera Elaine **Milks**, daughter of Butler W. **Milks** and Lydia Zeruie **Bothwell**, on 20 Jan 1913, in Pierce, Nebraska. Born 23 Apr 1892, in Norfolk, Nebraska. Died 13 Jan 1984, in Scottsbluff, Nebraska. Children:

- 106 i. Linnie Elaine⁴.
- 107 ii. Ruby Arlene.
- iii. Valarie Wyona. Born 23 Apr 1918, in Purdum, Nebraska. Died 24 Dec 1986. She married, first, Melvin **Uhlmer**, 30 Nov 1936. She married, second, Hewett Lee **Hill**, 23 Mar 1941 in Kansas City, Missouri. She married, third, Lyle Baker **Rossmann**, 10 Nov 1957, in Kenmore, Washington. Lyle born 21 Oct 1909 in Seattle, Washington. Lyle died Dec 1976 in Washington.
- 108 iv. Omer Laton.

- v. Walter Martin. Born 2 Feb 1923, in Purdum, Nebraska. Died 30 Sep 1944, in Palau Islands.²⁹
- vi. Elizabeth Joyce “Betty” Adell. Born 26 Mar 1926, in Broken Bow, Nebraska. She married Dale P. **Farrar**, son of Vance V. **Farrar** and Lillie F. **Porter**, 2 Jun 1944, in New York City, New York. Divorced before Nov 1946. Dale born 26 Jan 1922. Died 15 Feb 2003.
- 109 vii. Tutcie Dorris.
- viii. Darrell. Born 20 Jun 1931, in Broken Bow, Nebraska. Died 21 Sep 1931, in Broken Bow, Nebraska.

Walter was an on-and-off member of the Midwest professional and semi-professional wrestling circuit for at least 16 years, starting before his marriage and continuing into the 1920s. Four labeled and posed pictures of Walter in his wrestling togs show him at age 19, 24, 30, and 35.

About a year after their marriage, Walter and Vera and their three-month-old daughter Linnie crossed into Canada at the Emerson, Manitoba border (14 Mar 1914). Walter, family stories say, wanted to claim homestead land that had recently been made available by the Canadian government. They were still in Canada in Jan 1916 (in Minburn, Alberta, where they presumably homesteaded) when Ruby Arlene, their second child, was born.

Sometime over the next two years, Walter and his family returned to the US. In 1918, when Walter registered for the draft (12 Sep 1918), he and Vera were living in Butte County, South Dakota.³⁰ On the card, Walter is described as short and stout with blue eyes and brown hair.



Walter Luther's wrestling publicity photo from about 1923

²⁹Walter Martin saw action under General MacArthur and was killed while on duty on Peliliu Island in World War II. The American Legion was in charge of his funeral.

³⁰ Walter claimed on his registration form that he was born in 1885, probably to make himself two years older than he really was. He should have registered for the draft in the first round on registrations on June of 1917 when the 30-and-under men were enrolled. Perhaps Walter was not in the US at this time and altered his age in 1918 to avoid explaining why did not register when he was supposed to.

How much time Walter gave to professional wrestling over his lifetime is not known, but at certain points in his life it seems to have been his principal occupation. On 3 Aug 1917, Walter was in Ravenna, Nebraska, to wrestle the famous John Pesek. This may have been the match at which Walter broke his leg--John Pesek had a reputation for brutality. Walter was wrestling again by 1919. A typed letter dated 15 Aug 1919 from Walter to his nephew and friend Omer has survived. On the letter, written on stationary created by Walter's impresario Hal D. Wheaton, Walter's age-30 wrestling picture is in the upper left. Walter explains in his message to Omer the arrangements that have been made for who will win the matches he will be having in nearby Newell, South Dakota, against Charley Burnes (Burns?). Walter says that Omer should come up and bet on the matches. "We can knock them birds off for all kinds of money. At least \$1000." He also discusses horse prices—Walter did a fair amount of horse trading in his early years. In Jan 1920, Walter was back in Lead City, South Dakota, for another match. Somehow in this intense round of wrestling activity, Walter and his family found time to move. They were back in Nebraska for the 1920 census, living in the same township—Algernon, Custer County, near Mason City—where Walter had been born 33 years earlier.

By 1930, Walter, Vera, and the kids had moved again, this time to Dunning, Nebraska. They are living in a rental property. Walter describes himself on the 1930 census as a trucker. He was driving truck for his nephew Omer's oil transport company in these years, but perhaps also working for other employers. All but one of their children had been born by the time of the 1930 census. Walter died at age 50, on 29 Sep 1937. The family were living in Sargant, Nebraska, at the time of his death. Walter is buried in the Broken Bow, Nebraska, cemetery.

Three years later, on the 1940 census, Walter's widow Vera is living with three of her grown daughters in North Platte, Nebraska. Her 11-year-old daughter Tutcie, however, is living with another North Platte family. The rest of the children are out of the home. In the 1940s, Vera married a Czech carpenter, Louis Vernon Sladek.³¹ She is domiciled with him on the 1950 census. The couple made their home in Ainsworth, Nebraska until Louis died on 2 Jul 1970. Vera died on 13 Feb 1984 in Scottsbluff, Nebraska, and is buried in Broken Bow, Nebraska.

³¹ I have not been able to locate a marriage record.

27 Virginia³ **Luther** (James², Ebenezer¹). Born June 1870.

The family history does not know much about James and Suzy Luther. On the topic of their children, all it says is that they had “two boys and one girl.” Research into available genealogical sources reveals, as noted above, that the girl was Eliza Jane Luther (1870-about 1910) and that one of the boys was John Luther (1867-).

Since John was born a year after his parents’ marriage, and Eliza Jane was born three years later, and there was no intervening child, then the third child must have been born in 1871 or later. It's hard to imagine how an intermediate child would not have been included in the 1870 census that shows the young family. The obvious assumption, then, would be either (1) that the boy lived only a few years or (2) that, since the boy could have been fairly young when the household was broken up, he was informally adopted by some local family and acquired another surname.

There is, however, an alternate scenario. If the Luther family history is wrong and the child was a girl (i.e., if the history should have read “two girls and one boy”), then the child might have been a Virginia Luther (also known as Jane, Jennie, and Linnie) who was born in Nebraska in 1774.

No documents from what would have been her early life in Nebraska have survived, so far as know. But four documents from her adult years provide a brief bio. In the 1900 federal census of the Indian Territory of the Cherokee Nation, part of what would later become Oklahoma, we find Virginia and her children, but no husband, in Chelsea Township, District 0019. In this census, Virginia, known in this record by her nickname “Jane,” says that she is a widow. She has two children, one born about 1888 (Frank), the other (Ola) about 1895. Virginia claims that she is 21 and was born in 1879. This must be a mistake, given that she has a 12-year-old son. The second biographical source is a 1908 marriage record that shows Jane marrying T.T. Burrus on 10 Dec 1908 in Rogers, Oklahoma. Jane is 34 on the license, which agrees with an 1874 birth, a birth date that agrees with the next two records. The third biographical source is the 1910 census for Claremore, Rogers County, Oklahoma. Virginia, now calling herself “Jennie,” is in the household with her new husband. A third child has been born (Henry Olen) in 1904. The final source for the adult Virginia is the 1920 census. In it, Jane, now age 47, is living with her oldest son, William Franklin, in Housecreek Township, Pawnee, Oklahoma. Also in the household is her youngest and last child, Henry Olen, age 18. She still calls herself “Jane Burrus,” but her husband is not with her.

Going by these four biographical sources, we come up with this scenario:

- A woman named Virginia, last name unknown, also calling herself Jane or Jennie, was born in Nebraska in 1874.
- She married a man named Luther in Nebraska about 1888-90 when she was in her mid to late teens,
- She and her husband had a son (Frank) in Nebraska in 1889-91.
- She moved to Oklahoma, with or without her husband, and had a daughter (Ola Luther) in Oklahoma in 1896.
- She had a final child in Oklahoma in 1902, Henry Olen Luther.³²
- Virginia, age 34, marries T.T. Burrus in Oklahoma in 1908. She lives with him a few years but has no children with him.
- In 1920 she is living in Oklahoma with her two sons and no husband.

In 2000, email correspondence between Kem Luther and George Washington Luther (1930-2019, lived in Claremore, Oklahoma), the grandson of Virginia and the son of Henry Olen, filled in some of this bare outline. George added these details:

- Virginia Luther and her two sons, Henry Olen Luther and Frank William Luther, all died within a few years of each other. Virginia first, and then Henry Olen. This all happened in about 1935, when George was five.
- The name of Virginia's husband was Henry B. Luther. Henry had at least one brother.
- Virginia is the daughter of James and Suzy. Virginia loved her father, but she did not live very long with her parents. George claims to have in his possession James's original discharge papers from the Civil War.
- Virginia Luther and Henry B. Luther were both born as Luthers. More than this, they were actually cousins.
- All three children are the children of both Virginia and Henry B. Luther.
- Virginia used the names Jane and Jennie.
- Virginia's marriage to T.T. Burrus did not last because he was "a hard man."
- Virginia in her late years married a man named "Fowler" and took his last name. This person was Patti Page's (born Clara Ann Fowler) grandfather.

³² An obvious question, since Virginia is head of the house on the 1900 census and calls herself a "widow," would be "Who is the father of Henry Olen?"

Unfortunately, some of the information in George's emails was based, not on first-hand information, but on what he inferred from a dip into the records. Since some of the inferences he made (e.g., that Virginia was the same person as Eliza Jane, b. 1870) were mistaken, it is hard to know which of his statements above can be counted as primary data. On balance, though, it seems like a reasonable conclusion that Virginia is the missing child of James and Suzy and that the family records are wrong when they say that the missing child was a boy. But this cannot be a certain conclusion without further data.

She married Henry B. **Luther**, son of David Easterbrook **Luther** and Abby **Easterbrook**. Born 19 Dec 1852 in Rhode Island. Children:

- 110 i. William Franklin⁴, aka Frank Luther.
- ii. Ola. Born Nov 1895.
- 111 iii. Henry Olan, aka Olen Luther.

It seems likely that this Henry B. Luther is the same person who is described in the second edition of the *Luther Family in America*,³³ p. 856. He was born 19 Dec 1852 in Warren, Rhode Island. This Henry B. Luther had a brother, William Olin Luther, who died young (1863-1869). The echo of his brother's name in two of the sons, William Franklin and Henry Olen, also argues in favour of this identification.

This Henry B., according to census records, lived with his parents in Warren, Rhode Island, from the time he was born until he was 28 (the 1880 census). At this point, he disappears from the Rhode Island records. He could have headed west and married Virginia before 1888, when their first son was born.

Virginia's descendants say that Henry B. Luther was Virginia's cousin. But this may be a story built up from the idea that Henry B. and Virginia had the same last name and their families both came from the East Coast. Since Ebenezer seems to descend from the Captain John Luther that goes through John's son Samuel³⁴ and Henry derives from the line that goes through John's son Hezekiah, Henry B. and Virginia would not have shared an ancestor who lived later than the 17th century.

She married, second, Thomas T. **Burrus**.

³³ Leslie L. Luther and George A. Luther, *The Luther Genealogy: A History of the Descendants of Captain John Luther* (privately published, 2001), 856.

³⁴ See the arguments for this in my summary "The Search for Ebenezer Luther's Ancestral Lines," found at <https://kempluther.com/notbooks/genealogy/>

She married, third, **Fowler**.

28 Franklin Walter³ **Brown** (Mary Ann², Ebenezer¹). Born 23 May 1857 in Mercer County, Pennsylvania. Died 26 Nov 1939 in Sabetha, Kansas.

Franklin Walter Brown was born just before the Civil War in Mercer County, Pennsylvania. He was the son of Orlando Brown and Mary Luther, Henry Luther's sister. His family called him "Walt." He traveled west with his parents in the 1850s as they tracked toward the Great Plains with Mary's family and some of her siblings. He and his parents made it to Illinois in 1868, perhaps arriving just after Mary's father died.

They weren't long in Illinois. Within about a year, the Browns, Mary Ann's brother Henry and his family, and their mother Aurilla had moved further west, to Brown County, Kansas. This was near the town of Hiawatha, about 15 miles from Sabetha, where they would take up residence some 25 years later. Walt was then 13 years old.



Franklin and Lucy Brown,
around the 1920s

Within another year or two, the Luthers and Browns took to the road again, this time to settle on homesteads in Saline County, Nebraska. A teenaged Walt appears on the Saline County school records in the middle of the 1870s. On the 1880 census, Walt is 23 years old, still unmarried. But that would soon change. Two months before his 29th birthday, Walt married.

He married Lucy Ann **Bent**, daughter of Lincoln Goodale **Bent** (1818-1877)³⁵ and Marianne **Kurtz**, 30 Mar 1886, in Saline Co, Nebraska. Born 11 Mar 1851, in Wabash County, Indiana. Died 26 Nov 1935, in Sabetha, Kansas.

Children:

- i. Unnamed⁴. Died 8 July 1887
- 112 ii. Elsie Mae.

³⁵ Dates for father taken from "The Bent family in America. Being mainly a genealogy of the descendants of John Bent who settled in Sudbury, Mass., in 1638, with notes upon the family in England and elsewhere" by Allen H. Bent (Boston: Printed by David Clape and Son, 1900). Online at Internet Archive.

- 113 iii. Elva Lula.
114 iv. Elmer Orlando.

Walt's new wife, Lucy Ann Bent, was six years older than he was. Sometime after 1880, her large Quaker family (she had eight siblings) had arrived in Saline County from Indiana. Frontier life was tough for the new couple in the years after their marriage. Their first child was stillborn. Their daughter Elsie, who was born on 10 Oct 1888, has left remembrances of how difficult it was for the family to acquire even the most basic foods.



Elsie and Elva Brown, ages 16 and 14,

About 1895, when Nebraska was in the grip of a drought, the Henry Luther family and all the Browns moved to the area around Sabetha, Kansas. Walt's parents were recorded by the 1895 Kansas state census, but Walt and Lucy's family seem to have been missed by the census-takers. A date that Elsie wrote on a picture of the family farm, however, suggests that 1895 was also the year when this family moved to Kansas. Walt and Lucy had enough capital saved from their time in Saline County, Nebraska, to buy a 165-acre farm in Kansas.

Walt and Lucy appear as landowners on the 1900 census in Rock Creek Township, Nemaha County, a township that borders on Brown County. All three of their children have been born.

Stories about Walt and Lucy's family recorded by Elsie's children paint a picture of the family's increasing prosperity over the next few years. After the depression, the couple would end up owning seven farms. The family stories, however, have a darker side. Walt tried to rule his family. As the two girls got older, they came into conflict with their strict father. When Walt's daughter Elsie was 16, an argument with her father at the dinner table caused her to leave the table in anger. When her father looked for her later, he couldn't find her in the house. Assuming she had left home, he forbade the family to allow her to return to the homestead. She was forced to live elsewhere, and she married at 19. In later years, Elsie's mother Lucy would have to travel to wherever her daughter was living to talk with her—Elsie did not set foot in the house while her dad was living (though he did allow her and her husband to occupy one of the farms he owned). A similar conflict with the second daughter

Elva led her father to disown her also. Walt did not think that his daughters had married well. At his death, his accumulated wealth passed to his son and grandchildren.

Elsie married Truman Kerr on 3 Aug 1907. On 27 Nov 1919, Walt and Lucy's son Elmer married Glenn S. Meisner. The 1920 census shows Elmer and Glenn living with Walt and Lucy on the family farm and Elsie and Truman living about 20 miles south on a rental property. Elva, who had married Ray Sinclair Wilkins on 5 Jul 1911, was living on another Nemaha County rental property even further away from her parents than Elsie. Elmer and Glenn soon moved to another farm. Walt and Lucy are living by themselves on the 1925 Kansas state census and the 1930 federal census. Lucy died on 26 Nov 1935 and exactly four years later to the day, on 26 Nov 1939, Walt died. They are buried in the Sabetha Cemetery in Sabetha, Kansas.

29 William Ellworth³ **James** (Hannah², Ebenezer¹). Born 2 Aug 1865 in Macomb, McDonough County, Illinois. Died 22 Apr 1939 in Biloxi, Harrison County, Mississippi.

Willie, as William Ellworth was usually known, was the only one of Jesse and Hannah's four children to have been born in Illinois. At the age of four or five, he moved with his parents to Claytonville, Brown County, Kansas. He shows up there on the 1870 federal census. His grandmother, Aurilla M. Luther, is in the James's household.

William traveled with his family to Saline County, Nebraska, in 1871. He appears on the Saline County school records in 1872 and 1874. In 1875, his mother Hannah died, leaving four young children. Willie, then 10, was the oldest. Chances are that Aurilla continued to live with the Jameses in Saline County and probably provided some help in the James's household between Hannah's death in 1875 and her own death in 1880.³⁶ William does not appear on the Saline school records after his mother's death, perhaps reflecting the unsettled conditions in the household—his help at home would have been sorely needed. When William's father Jesse remarried in 1879, the 14-year old Willie gained a 28-year old stepmother. The rest of the Luthers moved from Saline County to Custer County, Nebraska, in 1884. Willie and his father and siblings remained behind in Saline County.

An Illinois family named Mumma had immigrated to Saline County in the early 1870s. We see them on the 1880 census:

Name	Sex	Race	Age	Status	Relation	Occupation	Birth Place
B. F. Mumma	M	White	42	Married	Head	Farmer	Nebraska
Ann E. Mumma	F	White	31	Married	Wife	Keeping House	Illinois
Ora B. Mumma	F	White	11	Single	Daughter	At Home	Illinois
Lillie D. Mumma	F	White	5	Single	Daughter		Nebraska
William F. Mumma	M	White	3	Single	Son		Nebraska
Samuel W. Mumma	M	White	1	Single	Son		Nebraska
Frederick Finney	M	White	18	Single	Other	Laborer	Nebraska

³⁶ As pointed out in the summary of Aurilla, in the year of her death, she deeded the homestead property she had acquired in Saline to James—more evidence of the close connection between Aurilla and Hannah's family.

In 1888, when Willie was 22, he married the oldest Mumma child. Ora Belle was 18 and, like Willie, had been born in Illinois.³⁷

He married Ora Belle **Mumma**, daughter of Benjamin Franklin **Mumma** and Ann Elizabeth **Rose**, on 6 Apr 1888 in Saline County, Nebraska. Born 11 Jun 1869 in Illinois. Died 22 Dec 1953 in Biloxi, Mississippi.

115 i. Leroy James⁴.



Willie and Ora James

Willie and Ora would remain in Saline County for the next 20 years. Their only son, Leroy, was born there a few months after the marriage. The family shows up in Saline's Pleasant Hill township for the 1900 federal census. Willie is listed as a farmer. By the time of the 1910 census, they have moved into Dorchester, a Saline town a few miles north. Willie calls himself a "retired farmer" and is doing odd jobs.

Sometime in the 1910s, William and Ora moved to Biloxi, Mississippi. The pull may have been their son Leroy. He had first moved to Biloxi in 1913, and in 1916 he married a woman from Louisiana. For the 1920 census, Willie and Ora and Leroy and his wife were all living together. With them are Ora's younger brother William Franklin Mumma and his second wife, Pearl:

Name	Sex	Race	Age	Status	Relation	Occupation	Birth Place
Wm James	M	White	54	Married	Head		Illinois
Ora B James	F	White	50	Married	Wife		Illinois
Leroy James	M	White	30	Married	Son		Nebraska
Agnes James	F	White	23	Married	Daughter-in-law		Louisiana

³⁷ If the date of 1884 on the portrait of Willie and Ora is correct, they had probably been an item for several years before the impending arrival of a child impelled the marriage.

Wm Mumma	M	White	43	Married	Brother-in-law		Nebraska
Pearl Mumma	F	White	34	Married	Daughter-in-law		Nebraska
Vilas Mumma	F	White	13	Single	Grandchild		Nebraska
Leo Mumma	M	White	12	Single	Grandchild		Nebraska
Lola Mumma	F	White	9	Single	Grandchild		Nebraska

The last time we see William and Ora together is in the 1930 federal census for Biloxi, when he is 65 and she is 60. Willie died on 22 April 1939 in Biloxi, aged 73. Ora would live on another 14 years, dying in Biloxi on 22 Dec 1953.



Willie James, probably in Mississippi

30 Herbert Byron **James** (Hannah², Ebenezer¹). Born 11 Apr 1868 in Brown County, Kansas. Died 5 Jan 1954 in Kanorado, Sherman County, Kansas.

Herbert's first appearance in official records comes early—before he is two years old—on the 1870 federal census for Kansas. His parents had moved from McDonough County, Illinois, to Brown County, Kansas, in 1867 or early 1868. The next year, the Jameses and the rest of the Luther clan left Kansas and moved to Saline County, Nebraska, to take up several parcels of homestead land.

Herbert grew up in Saline, but not in an intact family—his mother Hannah died in 1875, when Herb was only five. His grandmother Aurilla, who was staying with Hannah and James, probably had some role in caring for the young Herbert until his father remarried to a widow with children in 1879. In the 1880 federal census of Saline County, we see a blended family, the 10-year old Herbert living with his father, his stepmother and some of her family, and two of Herbert's full siblings.



Herbert Byron & Emma James

Herbert married when was 21 to a woman about the same age. She also, when she was seven, had lost her mother and gained a stepmother. At the time of the marriage, the family of his bride was living in Panama Township, Lancaster County, Nebraska. This was about 30 miles from where Herbert lived in Saline County, so it is not clear how Hebert and Emma might have met. The 1880 federal census gives us a snapshot of his future wife's family:

Name	Sex	Race	Age	Status	Relation	Occupation	Birth Place
Elias Brewer	M	White	33	Married	Head	Farmer	Iowa
Martha Brewer	F	White	21	Married	Wife	Keeping House	Illinois
Emma Brewer	F	White	10	Single	Daughter	At School	Nebraska
John N. Brewer	M	White	8	Single	Son	At School	Nebraska
Silva Brewer	F	White	4	Single	Daughter		Nebraska

Herbert married, first, Emma Lee **Brewer**, daughter of Elias **Brewer** and Lucinda **McDonald**, on 19 Dec 1889 in Seward, Nebraska. Born 13 Apr 1870 in Nebraska. Died 5 Nov 1948 in Kanorado, Sherman County, Kansas. Children:

- 116 i. Herbert Carlyle “Lyle”⁴.
- 117 ii. Bessie Lorena.
- 118 iii. Harold Victor.
- 119 iv. Jesse Byron.
- 120 v. William Earl.
- 121 vi. Howell Marlowe.
- 122 vii. Lowell Stanford.
- 123 viii. Delph Leland.
- ix. Curtis Carleton. Born 13 Jan 1912 in Kansas. Died 10 Jun 1962 in Las Vegas, Nevada. He married Jales C. **James**. Born circa 1917. Perhaps other marriages. No children.

Herbert married, second, May B. **James**. Born about 1883 in Colorado.

A few years after their marriage, around 1893 or 1894, Herbert and Emma and their growing family moved to the far western side of Kansas, near the state's border with Colorado. They would spend most of the rest of their lives in Grant Township, Sherman County, Kansas. When we first see them there in 1895, on the Kansas state census, they have already had the first two of their nine children. Five years later, on the 1900 federal census for Kansas, four of their children have been born, and by the 1910 census, all but one of their children have been born. The 1915 Kansas state census marks a watershed—all nine children have been born and their farm is now mortgage-free.

From here on, the family at home began to shrink as the children married and left home. By the time of the 1920 census, the four oldest children have left to set up their own families. Herbert and Emma will eventually have more than 25 grandchildren contributed from eight of their nine children.

Before the 1930 federal census, Herbert and Emma moved from the farm into the nearby town of Kanorado, where Herbert was employed as a truck driver. The only child left at home, William Earl, was the town's assistant postmaster. Within two years, Earl married and left home. Around the time of Earl's departure, Herbert and Emma divorced after more than 40 years of marriage and raising nine children together. Sometime before 1935, Herbert moved out of the house onto a rural property, to a farm that he owned outside of Kanorado, and he took up housekeeping with someone calling herself “May B. James.” On

the 1940 census, May B. (age 57) is described as the wife of the 72-year old Herb James.³⁸ The abandoned Emma continued to live in their house in town. The 1940 census lists her as “divorced” and the “head” of the house. Emma died on 5 Nov 1948, still living in Kanorado. She was buried in the Kanorado Cemetery.

In 1950, Herbert, then 82 and “unable to work,” was still living with May (age 67) on the farm property. Herbert died on 5 January 1954. He was buried in the Kanorado Cemetery. His grave is in a different part of the cemetery than that of Emma.

³⁸ If a record of the marriage exists, I have not been able to find it..

31 Letitia A. **James** (Hannah², Ebenezer¹). Born 22 Dec 1870 in Kansas. Died 4 Mar 1926 in Beaver Crossing, Seward, Nebraska.

Letitia was the third child and first daughter. of Jesse H. James and Hannah L. Luther. She came into the world during her parent's brief stay in Brown County, Kansas. Letitia was no doubt named after her father's mother, Leticia (Bennett) James.

The summer after the young Letitia was born, the family moved to Saline County, Nebraska. Her mother died when Letitia was only four (1875) and her father remarried when Letitia was eight to a widow with children. We see Letitia in the blended family at the 1900 federal census of Saline County.

On 29 Nov 1887, when Letitia was just 16, she married the 29-year-old George William Norris in Wilber, Saline County, Nebraska. George had been born in Salem, Rockingham County, New Hampshire, the oldest child of Ichabod and Harriet Leeds Norris. George William would eventually acquire five siblings. The Norris family moved from New Hampshire to Merrimac, Sauk County, Wisconsin, sometime before 1870. We find the 18-year-old George William there in the 1880 census.



Letitia James, about 1885

Name	Sex	Race	Age	Status	Relation	Occupation	Birth Place
John Norris	M	White	52	Married	Head	Farmer	New Hampshire
Harriet Norris	F	White	40	Married	Wife	Keeping House	New Hampshire
William Norris	M	White	20	Single	Son	At Home	New Hampshire
Charles Norris	M	White	18	Single	Son	At Home	New York
Dan Norris	M	White	16	Single	Son	At Home	New Hampshire
Nellie Norris	F	White	10	Single	Daughter	At Home	Wisconsin
Ned Norris	M	White	4	Single	Son		Wisconsin
Bertha Norris	F	White	2 months	Single	Daughter		Wisconsin

George's parents and most of his family would remain in Wisconsin for the rest of their lives, but George and one of his brothers (Daniel Clifford Norris) moved to Nebraska in the 1880s, setting the stage for George to meet and wed Letitia.

She married George William **Norris**, son of Ichabod Johnson **Norris** and Harriet Augusta **Leeds**, on 29 Nov 1887 in Wilber, Saline County, Nebraska. Born 2 Apr 1860 in Danbury, Merrimack County, New Hampshire. Died 5 Jan 1944 in Beaver Crossing, Seward County, Nebraska.

- 124 i. Erma M⁴.
- 125 ii. Glendon William.



George William and Letitia James Norris, early 1920s

The first time that official records notice the new family after the marriage is on the 1900 census. The couple are living in Seward County, Nebraska, on their own (mortgaged) farm. Their first child, daughter Erma, had been born in September 1888 and was then 12. In these years, Letitia was an active member (at one point, the recording secretary) of the local chapter of the Women's Christian Temperance Union.

By the time the 1920 census was taken, the family had moved into the growing town of Beaver Crossing, Nebraska, a village of about 500 people. They had two children, 12 years apart in age. George listed himself as working at “odd jobs” rather than as a farmer. The 21-year old daughter Erma was a schoolteacher.

Letitia died on 4 Mar 1926 in Beaver Crossing, Seward County, Nebraska, aged 55, and is buried in the Beaver Crossing cemetery. George remarried in the next few years to Melissa Bodell, a widow who had seven grown children. On the 1930 census, George William is 69, Melissa is 60. The 1930 census shows them living in the same place, both 10 years older. George died at 83, on 5 Jan 1944. He was buried in the Beaver Crossing Cemetery, at Letitia's side.

32 Minnie Bell **James** (Hannah², Ebenezer¹). Born 28 Dec 1873 in Western, Saline County, Nebraska. Died 11 May 1955 in Friend, Saline County, Nebraska.

Minnie is the only child of Hannah and James to have been born after their move from Brown County, Kansas, to Saline County, Nebraska. Two years after her birth, Minnie's mother died. An entry from the Bible of Mary Ann Brown, Hannah's sister, says that Minnie "was a gift by her parents to Orlando and Mary A. Brown four days before her mother's death."

When the Henry Luther family moved from Saline County to Custer County, Nebraska, in 1884, Minnie and the Browns stayed on in Saline County, remaining there for another 10 years. When she was 19, she married.

She married Charles Elisha **Wattles**, son of Elisha Benjamin **Wattles** and Lovisa Miranda **Phelps**, on 21 Sep 1893 in Wilber, Nebraska. Born 11 Jun 1873 in Eden, Fayette County, Iowa. Died 17 Nov 1955 in Beaver Crossing, Seward County, Nebraska. Children:

- i. Gurtie Bell⁴. Born 20 Feb 1895 in Kansas. Died 15 Feb 1899.
- 126 ii. Rhoda Arilla.
- 127 iii. Ethel Irene.
- iv. Leta Margurette. Born 14 Jul 1909 in Beaver Crossing, Seward County, Nebraska. Died 16 Mar 1997 in Beaver Crossing, Seward County, Nebraska. She married James Lee **Hall**, son of Gary Augustus **Hall** and Daisy Loretta **Miner**, on 31 Dec 1930. Born 10 Mar 1907 in Friend, Saline County, Nebraska. Died 16 Sep 1992 in Friend, Saline County, Nebraska.
- 128 v. Edna Pauline.

When the Browns left Saline to return to Kansas in 1895, Minnie and her new husband went with them. On the 1895 Kansas state census for Rock Creek, Nemaha County, Kansas, Charles and Minnie were living just a few houses away from the Browns. Their first child, Gurtie, was only a few months old.

The Browns stayed in Kansas for the rest of their lives. Minnie and Charles, however, did not remain there long—only a year or two—before returning to Nebraska. On the 1900 federal census, we find them in Seward County, Nebraska. Their first daughter had died the year before, and their second daughter—the Nebraska-born Rhoda Arilla—was three years old. (She was probably named for her grandmother, Aurilla Wait Luther, who died when Minnie was seven.) Charles's sister Dora, age 14, was living with them in 1900. Within two

years, Charles's father, who had been homesteading in western Kansas, would join Charles and Emma in Seward County.

On the 1910 census, we see the family growing—Charles and Minnie have three daughters. They were still living on a rented farm, but not the same one that they were on in 1900. A book published about the early days of Seward County contains an entry on Charles and Minnie written by their daughter, Leta Margurette Hall. According to Leta, the family moved into the east part of the town of Beaver Crossing about 1907 and from there to a farm northwest of Beaver Crossing. This must be the farm where they were living in 1910.

Although not mentioned by their daughter in the Seward County book, Charles and Minnie and their family returned for a time to Kansas. During the 1915 Kansas state census, they were in Grant County in Western Kansas. For the first time in the records, Charles and Minnie own the (mortgaged) farm they lived on.

Charles and Minnie seem to have been missed in the 1920 federal census. Perhaps this was because they were in transit—in 1920, says their daughter, they moved to a 10-acre farm just west of Beaver Crossing, Nebraska, and started up a truck garden, raising and selling fruit and vegetables. "In a little Model T Ford pickup, Charles delivered vegetables and fruit to surrounding towns." People also came to the farm to buy produce. "Two flowing wells irrigated the long rows of garden crops. The daughters assisted with the care of the long vegetable rows." When the children complained about the work, Minnie "would promise a fishing expedition for the evening." If they were successful, they would clean what they caught by lantern light after they returned home, and their catch would become part of next morning's breakfast.

The family remained on this truck farm for almost thirty years. We find them there in the 1930 and 1940 federal censuses. One by one, the four girls married and left home. Sometime before the 1950 census, managing the garden business became too much for Charles and Minnie—they were both in their mid 70s—and they moved back into the town of Beaver Crossing. Minnie died on 11 May 1955 and Charles a few months later, on 17 Nov 1955. They were buried in the Beaver Crossing Cemetery.

Fourth Generation

33 Esther **Luton**⁴ (Henry F.³, Caroline², Ebenezer¹). Born about 1871 in Oskaloosa Township, Mahaska County, Iowa. Died 9 Nov 1920 in San Bernardino, California.

She married Robert Elder **Stidham**, son of Joseph Penrose **Stidham** and Sarah E. **Elder**, on 9 Dec 1890 in Colton, San Bernadino County, California. Born 4 Oct 1864 in Urbana, Champaign County, Illinois. Died 5 Aug 1946 in Torrance, Los Angeles County, California. They had four children.

34 Nelson Harrison **Luton** (Henry F.³, Caroline², Ebenezer¹). Born 14 Aug 1872 in Oskaloosa, Mahaska County, Iowa. Died 29 Nov 1953 in Blackburn, Pawnee County, Oklahoma.

He married, first, Melvina **Smith**, daughter of Alva Daniel **Smith** and Dilla **Smith**. Born about 1873 in Iowa. Died 15 Jul 1899 in Clifton, Washington County, Kansas. They had three children.

He married, second, Mary Louisa **Graham**, daughter of Richard Cornelius and Mary Ann **Press**. Born 7 Aug 1869 in Postville, Allamakee County, Iowa. Died 24 Jun 1947 in Blackburn, Pawnee County, Oklahoma. They had ten children.

35 Frank Mahaska **Luton** (Henry F.³, Caroline², Ebenezer¹). Born 25 Jul 1878 in Indianapolis, Mahaska County, Iowa. Died 7 Aug 1960 in Orange County, California.

He married Jennie C. **Anderson**, daughter of Paul **Anderson** and Ingeborg Pederdatter **Holtane**. Born 15 Dec 1875 in Wisconsin. Died 15 Jul 1960 in Orange, Orange County, California. They had two children.

36 Henry Elmer **Luton** (Henry F.³, Caroline², Ebenezer¹). Born 7 Apr 1879 in Oskaloosa Township, Mahaska County, Iowa. Died 30 Sep 1957 in San Diego, California.

He married Alva **Denling**, daughter of Abraham Lincoln **Denlinger** and Carrie T.E. **Bishop**. Born 11 Oct 1891-10-11 in Hartland Township, Kearny County, Nebraska. Died 12 Aug 1984 in Lakeside, San Diego County, California. They had two children.

37 Lewis Charles⁴ **Luton** (David Ebenezer³, Caroline², Ebenezer¹). Born Jun 1882 in Cherokee Nation, Indian Territory, Oklahoma. Died 10 Feb 1920 in Claremore, Oklahoma.

He married, first, Ida Lee **Willford**, daughter of George **Willford** and Alice Magdalene **Flecher**, on 5 Apr 1902. Born 12 Nov 1882 in Fayetteville, Washington County, Arkansas. Died 25 Aug 1962 in Picher, Ottawa County, Oklahoma. They had three children.

He married, second, Maggie **Young** on 6 Oct 1910. Born about 1890.

He married, third, Carrie Lonnie **Luton** on 13 May 1912. Born 22 Jan 1882 in Indian Territory, Oklahoma. Died 8 Sep 1959.

38 William Emory⁴ **Luton** (David Ebenezer³, Caroline², Ebenezer¹). Born 17 Mar 1884 in Cherokee Nation, Indian Territory, Oklahoma. Died 1960.

He married Mary **Sullivan** on 22 Dec 1909 in Caney, Montgomery County, Kansas. Born about 1884 in Oklahoma. Died 7 Jan 1962. They had one child.

He married Bertie Serena **Powell**, daughter of Richard Henry **Powell** and Renie Elizabeth **Balthrop**, before 1940. Born 23 Sep 1892 in Hatfield, Polk County, Arkansas. Died Jul 1973 in Claremore, Oklahoma.

39 Dempsey Albert⁴ **Luton** (David Ebenezer³, Caroline², Ebenezer¹). Born 21 Mar 1889 in Cherokee Nation, Indian Territory, Oklahoma. Died 31 Jul 1972 in Jackson, Teton County, Wyoming.

He married Eliza Ann **Sullivan**, daughter of William P. **Sullivan** and Georgia Mozella **Bible**, on 10 Apr 1910 in Craig, Oklahoma. Born 1 Apr 1892 in Claremore, Oklahoma. Died 3 Sep 1978 in Jackson, Teton County, Wyoming. They had four children.

40 Ruth Ana⁴ **Luton** (David Ebenezer³, Caroline², Ebenezer¹). Born 16 Jul 1891 in Cherokee Nation, Indian Territory, Oklahoma. Died 14 May 1947 in Driggs, Teton County, Idaho.

She married Elbert D **Van Leuven**, son of William Elliot **Van Leuven** and Julia Ann **Lake**, on 12 Jun 1917. Born 24 Oct 1885 in Clifton, Idaho Territory. Died 18 Jul 1950 in Teton County, Wyoming. They had one child.

41 Joseph Madison⁴ **Luton** (David Ebenezer³, Caroline², Ebenezer¹). Born 5 Feb 1893 in Cherokee Nation, Indian Territory, Oklahoma. Died 9 Feb 1964 in Riverside, California.

He married Barbara Alexandra **Crittenden**, daughter of John Harlan **Crittenden** and Killie **Walkingstick**, on 20 Apr 1916. Born about 1894, Going Snake District, Cherokee Nation, Oklahoma Territory. Died 30 Dec 1978 in Vancouver, Clark County, Washington. They had six children.

42 Blanche Alice⁴ **Webster** (Asher³, Samantha², Ebenezer¹). Born 10 Oct 1882 in Crawford County, Pennsylvania. Died 5 Oct 1953 at Franklin Hospital, Franklin, Pennsylvania.

She married David Vernet **Montgomery**, son of David Dunbar **Montgomery** and Mary S. **Sutton**, on 24 Nov 1904 in Venango County, Pennsylvania. Born 15 Oct 1874 in Butler County, Pennsylvania. Died 30 Mar 1951 in Warren County, Pennsylvania. They had two children

43 Harriet M. (Hattie) **Webster** (Asher³, Samantha², Ebenezer¹). Born 6 Dec 1884 in Mercer County, Pennsylvania. Died 27 Oct 1973 in Oil City, Venango, County, Pennsylvania.

She married John Robert **Smith**, son of William Bell **Smith** and Elizabeth Mary **Naylor**, on 12 Jun 1907. Born 20 Jun 1879 in Newcastle, England. Died Jun 1968 in Rockland, Venango, Pennsylvania. They had three children.

44 Maude Mahala **Webster** (Asher³, Samantha², Ebenezer¹). Born 20 Feb 1887 in Crawford County, Pennsylvania. Died 10 Nov 1968 in Sugarcreek, Venango County, Pennsylvania.

She married Howard **Painter**, son of John B. **Painter** and Margaret **Sadler**, on 29 Aug 1906. Born 28 Jun 1882 in Oil City, Venango County, Pennsylvania. Died 4 Jul 1964 in Oil City, Venango County, Pennsylvania. They had one son who died a few months old.

45 Vance Floyd **Webster** (Asher³, Samantha², Ebenezer¹). Born 9 Dec 1889 in Pennsylvania. Died 7 Dec 1918 in Cranberry, Venango County, Pennsylvania.

He married Merle Kathleen **Craig**, daughter of Perry William **Craig** and Ida **Milkay**, born 2 Aug 1892 in Venango County, Pennsylvania. Died 24 Aug 1970 in Oil City, Venango County, Pennsylvania. They had three children.

46 Mary Etta **Webster** (Asher³, Samantha², Ebenezer¹). Born 27 Apr 1892 in Pennsylvania. Died 21 Dec 1918 in Emlenton, Venango County, Pennsylvania.

She married Clarke Edward **Karnes**, son of Sheridan Clark **Karnes** and Eleanor Jane **Joseph**. Born 17 Dec 1887 in Butler County, Pennsylvania. Died 23 Jul 1945 in Emlenton, Venango, Pennsylvania.

47 Nora Irene **Webster** (Asher³, Samantha², Ebenezer¹). Born Oct 1894 in Pennsylvania. Died 9 Jan 1921 in Oil City, Venango County, Pennsylvania.

She married Ralph Roden **Rogers**, son of Joseph J. **Rogers** and Elizabeth E. **Lewis**, on 16 Oct 1912 in Venango County, Pennsylvania. Born 13 Dec 1887 in Oil City, Venango, Pennsylvania. Died 10 Jan 1961 in McCamey, Upton County, Texas. They had three children.

48 Clara L **Webster** (Asher³, Samantha², Ebenezer¹). Born 16 Jan 1897 in Pennsylvania. Died 25 May 1925 in Oil City, Venango, Pennsylvania.

She married Richard Denton **Shaffer**, son of Richard Lee **Shaffer** and Zuleika Mariah **Gardner**, before 1917. Born 7 Jul 1899 in Pennsylvania. Died 1956 in Pennsylvania. They had one child.

49 Ruth Ann **Webster** (Asher³, Samantha², Ebenezer¹). Born 11 May 1898 in Venango County, Pennsylvania. Died 26 Apr 1935 in Oil City, Venango, Pennsylvania.

She married William Jennings Bryan **Heeter**, son of John Siggins **Heeter** and Ire Iona **Shaffer**, about 1917. Born 27 Oct 1897 in Emlenton, Venango County, Pennsylvania. Died 16 Apr 1945 in West Deer, Allegheny, Pennsylvania.

50 Dorothy Grace **Webster** (Asher³, Samantha², Ebenezer¹). Born 1903 in Mercer County, Pennsylvania. Died 13 May 1970 in Grove City, Cameron, Pennsylvania.

She married Galen Glenn **Eaton**, son of Thomas West **Eaton** and Sarah Ellen **Wilkins**, on 24 Jul 1920 in Venango County, Pennsylvania. Born 23 Jul 1895 in Pittsville, Pennsylvania. Died 4 May 1977 in Cranberry Township, Venango County, Pennsylvania. They had four children.

51 Margaret Virginia **Webster** (Asher³, Samantha², Ebenezer¹). Born 26 Oct 1904 in Richland, Venango County, Pennsylvania. Died 14 Nov 1960 in Oil City, Venango, Pennsylvania.

She married Nelson Leroy **Fox**, son of Charles Alexander **Fox** and Etta Louella **Boyer**, about 1922. Born 25 Mar 1902 in Van, Venango, Pennsylvania. Died 26 Feb 1994 in Franklin, Venango County, Pennsylvania. They had three children.

52 Bernice Isabella **Webster** (Asher³, Samantha², Ebenezer¹). Born 1 Mar 1907 in Richland, Venango County, Pennsylvania. Died 24 Oct 2001 in Hermitage, Mercer County, Pennsylvania

She married John Homer **Hoffman**, son of John Bracken **Hoffman** and Mary Elida **Beck**, on 31 Dec 1925. Born 28 Dec 1904 in Armstrong County, Pennsylvania. Died 27 Jan 1973 in Grove City, Mercer County, Pennsylvania. They had four children.

53 Ethel May⁴ **Webster** (Henry Byrum³, Samantha², Ebenezer¹). Born 30 Jun 1892 in Meadville, Crawford County, Pennsylvania. Died about 1934 in Michigan.

She married, first, Daniel Mayer **Williams**, son of Samuel **Williams** and Mary Anna **Moyer**, about 1909. Divorced. Born 13 May 1858 in Mercer County, Pennsylvania. Died 15 Nov 1949 in Conneautville, Crawford County, Pennsylvania.

She married, second, Joseph Franklin **Homan**, son of Davis **Homan** and Grace **Franklin**, on 14 Dec 1926 in Cuyahoga County, Ohio. Divorced 20 May 1932 in Wayne, Michigan. Born 5 Jun 1882 in Indiana. Died 22 Jan 1959 in Little Rock, Pulaski County, Arkansas.

She married, third, Sulyman "Sam" **Allie** on 11 Mar 1933 in Detroit, Michigan. Born 14 Jul 1890 in Turkey Syrian Arab Republic. Died 5 APR 1949 in Detroit, Michigan.

54 George Washington **Webster** (Henry Byrum³, Samantha², Ebenezer¹). Born 30 Mar 1894 in Mercer County, Pennsylvania. Died 27 Aug 1964 in Mercer County, Pennsylvania.

He married Claudia Bonita **Brackel** before 1923. Born 1893 in Erie, Pennsylvania. Died 12 Jan 1936 in Ohio. They had two children.

55 Nellie Lauree **Webster** (Henry Byrum³, Samantha², Ebenezer¹). Born 10 Oct 1895 in Mercer County, Pennsylvania. Died 1970 in Conneautville, Crawford County, Pennsylvania.

She married Harry Lincoln **Peterson**, son of Crawford **Peterson** and Clara **Silverling** on 1 Jul 1912 in Meadville, Crawford County, Pennsylvania. Born 3 Jun 1884 in Greenwood, Crawford, Pennsylvania. Died 5 Jan 1962 in Meadville, Crawford, Pennsylvania. They had six children.

56 Samuel Ealon **Webster** (Henry Byrum³, Samantha², Ebenezer¹). Born 4 Aug 1899 in Mercer County, Pennsylvania. Died 4 Jul 1989 in Greenville, Mercer County, Pennsylvania.

He married Hazel Cora **Black**, daughter of Earl Jacob **Black** and Queen Erma **Bartholomew**, on 2 Nov 1926. Born 12 Sep 1908 in Sandy Lake, Mercer County, Pennsylvania. Died 15 Nov 1980 in West Salem Township, Mercer County, Pennsylvania.

57 Mary Grace **Webster** (Henry Byrum³, Samantha², Ebenezer¹). Born 12 Sep 1903 in Mercer County, Pennsylvania. Died Jan 1978 in Mercer County, Pennsylvania.

She married John Chester **Kelso**, son of Joseph **Kelso** and Carrie Amanda **Welker**, before 1923. Born 17 Jul 1901 in Mercer County, Pennsylvania. Died Feb 1974 in Mercer County, Pennsylvania. They had seven children.

58 Frank Burton **Webster** (Henry Byrum³, Samantha², Ebenezer¹). Born 12 Feb 1906 in Sandy Creek, Mercer County, Pennsylvania. Died 22 Jul 1977 in Trumbull County, Ohio.

He married Goldie Irene **Swogger**, daughter of Charles Edward "Charley" **Swogger** and Mary Jane **Hoobler**, before 1932. Born 16 Mar 1915 in Pennsylvania. Died 1 May 1998 in Sharon, Pennsylvania. They had two children.

59 Merle Leon Webster **Webster** (Henry Byrum³, Samantha², Ebenezer¹). Born 7 Jul 1914 in Sheakleyville, Mercer County, Pennsylvania. Died 6 Jul 1982 in Venango County, Crawford, Pennsylvania.

He married Pearle Isabelle **Barnes**, daughter of Glenn Harrison **Barnes** and Margaret Edith **Downing**, on 1 Jul 1951. Born 8 Mar 1917 in West Hickory, Forest County, Pennsylvania. Died 5 Feb 1992 in Meadville, Crawford County, Pennsylvania. They had two children.

60 Frank Martin⁴ **Payne** (Mary Jane³, Samantha², Ebenezer¹). Born 5 Feb 1882 in Friendship, Adams County, Wisconsin. Died 24 Jun 1942 in Chicago, Cook, Illinois.

He married Frances Phoebe **Moshure**, daughter of Isaac B. **Moshure** and Harriet R. **McMurtrie**, on 26 Feb 1903 in Quincy, Adams County, Wisconsin. Born 17 Dec 1880 in Quincy, Adams County, Wisconsin. Died 10 Mar 1966 in Cook County, Illinois. They had five children.

61 Melvin Alonzo **Payne** (Mary Jane³, Samantha², Ebenezer¹). Born 21 Dec 1885 in Preston, Adams County, Wisconsin. Died 31 Dec 1965 in Adams County, Wisconsin.

He married, first, Mary F. **Ollinger** on 29 Jan 1910. Born about 1892 in Germany. They had one child.

He married, second, Blanche Alice **Morley**. Born 16 Sep 1888 in Viroqua, Vernon County, Wisconsin. Died 28 Dec 1973 in Friendship, Adams County, Wisconsin.

62 Blanche May **Payne** (Mary Jane³, Samantha², Ebenezer¹). Born 28 May 1888 in Preston, Adams County, Wisconsin. Died 4 Jul 1970.

She married Grant Erwin **Wines**, son of John E. **Wines** and Esther Jane **Garthwait**, on 28 Oct 1908 in Adams County, Wisconsin. Born 13 Jul 1869 in Easton, Adams County, Wisconsin. Died 12 Dec 1947 in Los Angeles, California.

63 Alta Bernice⁴ **Grove** (Clarissa Aurora³, Samantha², Ebenezer¹). Born 26 Apr 1892 in Pennsylvania. Died 10 Mar 1983 in Pennsylvania.

She married Gaylord **Smock**, son of Joseph McClellan “Max” **Smock** and Elda A. **Klingensmith** on 31 Jan 1912. Born 16 Mar 1891 in Pennsylvania. Died 15 Feb 1947 in Meadville, Crawford County, Pennsylvania. They had two children.

64 George Lee **Grove** (Clarissa Aurora³, Samantha², Ebenezer¹). Boorn 14 Oct 1893 in Cochranon, Crawford County, Pennsylvania. Died 16 Feb 1964 in Conewango, Warren County, Pennsylvania.

He married Arvilla Mae **Williams**, daughter of Silas Cyrus **Williams** and Inez Celestia **Steadman**. Born 30 Sep 1900 in Pennsylvania. Died 17 Sep 1962 in Greenwood Township, Crawford County, Pennsylvania. They had three children.

65 Mary Elizabeth **Grove** (Clarissa Aurora³, Samantha², Ebenezer¹). Born 17 Aug 1898 in Pennsylvania. Died May 1986 in Crawford County, Pennsylvania.

She married William Florenz **May**, son of William **May** and Bertha Louise **Bealkey**, about 1917. Born 27 Jan 1898 in Willock, Allegheny County, Pennsylvania. Died 22 Jun 1971 in Meadville, Crawford County, Pennsylvania. They had two children, one of them stillborn.

66 Evelyn May **Grove** (Clarissa Aurora³, Samantha², Ebenezer¹). Born 6 Nov 1904 in Cochranon, Pennsylvania. Died 23 Sep 2003 in Mahoning County, Ohio.

She married Lawrence Clement **Shilling**, son of John T. C. **Shilling** and Anna Elizabeth **Klippol**. Born 6 Aug 1907 in Cochranon, Pennsylvania. Died 21 Nov 1995 in Dubois, Clearfield County, Pennsylvania. They had one child.

67 Mahulda⁴ **Luther** (George Austin³, Henry Lousern², Ebenezer¹). Born 13 Jan 1884 in Saline County, Nebraska. Died 13 Jun 1899 in Barnes, Kansas.

She married David Augustus **Phelps**, son of George Washington **Phelps** and Mahana Ann **Reed**, on 19 Apr 1898 in Blue Rapids, Kansas. Born 1 Jun 1875 in Derby, Indiana. Died 11 Nov 1938 in Marysville, Kansas. Later David married Orpha **Young** of Ansley, Nebraska, and had eight children. Mahulda and David had one child.

68 William Austin⁴ **Luther** (George Austin³, Henry Lousern², Ebenezer¹). Born 23 Apr 1886 in Custer County, Nebraska. Died 20 Oct 1947.

He married Amy Bell **Mitchell**, daughter of Mark William **Mitchell** and Maryetta **Hatfield**, on 25 Dec 1910, in Berwyn, Nebraska. Born 27 Sep 1884. Died 5 Feb 1949 in Seward, Nebraska. They had four children.

69 Earl⁴ **Luther** (George Austin³, Henry Lousern², Ebenezer¹). Born 9 Jul 1889 in Oelrichs, South Dakota. Died 1 Mar 1968 in Tucson, Arizona.

He married Mayme **Dorsey**, daughter of Edward Francis **Dorsey** and Mary **Golden**, on 3 Nov 1914 in North Platte, Nebraska. Born 15 May 1894. Died 7 Oct 1945 in North Platte, Nebraska. They had one child.

70 Emma Marie⁴ **Luther** (George Austin³, Henry Lousern², Ebenezer¹). Born 13 Jul 1893, in Custer County, Nebraska. Died 30 Dec 1982, in Greeley, Colorado.

She married Charles **McGill**, son of Marcellus Clark **McGill** and Mary Ann **Cover**, 22 May 1910, in Ansley, Nebraska. Born 8 Sep 1886, in Mason City, Nebraska. Died 25 Apr 1974, in Greeley, Colorado. They had five children.

71 Jennie Alice⁴ **Luther** (George Austin³, Henry Lousern², Ebenezer¹). Born 23 Sep 1896, in Custer County, Nebraska. Died 1 May 1980.

She married Nathan Potter "James" **Wright**, son of Stanbury **Wright** and Mary Frances **Sartain**, 18 Aug 1912, in Broken Bow, Nebraska. Born 23 Jul 1888. Died 10 Aug 1964, in Snohomish, Washington. They had ten children.

72 Eva Ruth⁴ **Luther** (George Austin³, Henry Lousern², Ebenezer¹). Born 24 Nov 1902 in Custer County, Nebraska. Died 24 Mar 1965 in Monroe, Washington.

She married George **Surdyk** on 7 Mar 1919, in Newell, South Dakota. Born 3 Apr 1892 in Romania. Died 16 Oct 1956. They had twelve children.

73 Lucy Eva⁴ **Luther** (Albert Henry³, Henry Lousern², Ebenezer¹). Born 3 May 1889 in Olerich, South Dakota. Died 29 Jul 1970 in Broken Bow, Nebraska.

She married James **Peterson**, son of Milter **Peterson** and Mary **Peterson**, on 3 Oct 1906 in Weissert, Nebraska. Born 1 Mar 1884 in Denmark. Died 6 May 1966. They had four children.

74 Edna Ellen⁴ **Luther** (Albert Henry³, Henry Lousern², Ebenezer¹). Born 25 Nov 1890 in Hot Springs, South Dakota. Died 24 Feb 1974 in Trinidad, Colorado.

She married James **Coleman**. Died 3 Nov 1923. They had one child.

75 Golda Mae⁴ **Luther** (Albert Henry³, Henry Lousern², Ebenezer¹). Born 19 May 1893 in Ansley, Nebraska. Died 7 Nov 1918 in Caspar, Wyoming.

She married, first, James **Gallington** on 10 Apr 1910. Born in Broken Bow, Nebraska. They had one child.

She married, second, an unknown man. They had one child.

76 Ernest Ellsworth⁴ **Luther** (Albert Henry³, Henry Lousern², Ebenezer¹). Born 22 Jun 1897 in Blue Rapids, Kansas. Died 16 Mar 1970 in Scottsbluff, Nebraska.

He married Rata V. **Myers** on 1 May 1920, in Thedford, Nebraska. Born 5 Feb 1898 in Anselmo, Nebraska. Died 15 Dec 1987 in Anderson, California. They had five children.

77 Anna Bell⁴ **Luther** (Albert Henry³, Henry Lousern², Ebenezer¹). Born 24 Feb 1902 in Weissert, Nebraska. Died 14 Sep 1985 in Denver, Colorado.

She married, first, Samuel **Alspaugh** in Broken Bow, Nebraska. They had three children.

She married, second, Alfred **Thomas**.

78 Charles "Chuck" Henry⁴ **Luther** (Albert Henry³, Henry Lousern², Ebenezer¹). Born 2 Sep 1906 in Weissert, Nebraska. Died 9 May 1980.

He married Alyma Geraldine **Farley**, daughter of Arthur **Farley** and Effie **Tyson**, on 6 Apr 1925. Born 14 Jan 1908. They had three children.

79 Pearl May⁴ **Luther** (Jessie Andrew³, Henry Lousern², Ebenezer¹). Born 24 Jun 1891 in Hot Springs, South Dakota. Died 3 Aug 1976.

She married John Wooster **Baldwin**, son of Wooster Nathaniel **Baldwin** and Fannie Jane **Hockings**, on 31 May 1916, in Thedford, Nebraska. Born 22 Mar 1880 in Oelwin, Iowa. Died 12 Oct 1955, in Kearney, Nebraska. They had six children.

80 Ethel Grace⁴ **Luther** (Jessie Andrew³, Henry Lousern², Ebenezer¹). Born 7 Oct 1893 in Broken Bow, Nebraska. Died 1 Apr 1987.

She married Homer Marshall **Martyn**, son of Dr. David Thomas **Martyn** and Susan P. **George**, on 21 Oct 1930, in Omaha, Nebraska. Born 21 Apr 1885. They had two children.

81 Jessie Lea⁴ **Luther** (Jessie Andrew³, Henry Lousern², Ebenezer¹). Born 26 Feb 1896 in Blue Rapids, Kansas. Died 8 Jan 1970 in Ainsworth, Nebraska.

He married Hervian Rose **Chase**, daughter of Charles Annis **Chase** and Mary Adelia **Bartholow**, on 26 Feb 1917 in Elsmere, Nebraska. Born 13 Jan 1899. They had eight children.

82 Anna Rosetta⁴ **Luther** (Jessie Andrew³, Henry Lousern², Ebenezer¹). Born 6 Jul 1903 in Beaver City, Nebraska. Died 26 Aug 1983.

She married, first, Virgil Elgie **Cash**, son of Elgie Frances **Cash** and Annette Harlin **Gates**, on 4 May 1921 in Minden, Nebraska. Born 15 Oct 1902 in Kearney, Nebraska. Died 22 Mar 1971. They had four children.

She married, second, Robert S. **Paul** on 10 Jan 1973. Born 5 Apr 1906.

83 Omer Kem⁴ **Luther** (Arthur Franklin³, Henry Lousern², Ebenezer¹). Born 12 Nov 1890 in Mason City, Nebraska. Died 18 Apr 1989 in Broken Bow, Nebraska.

He married, first, Bertha Dell **Reynolds**, daughter of Virgil **Reynolds** and Arminta **Loyd**, on 26 Oct 1906 in Marysville, Kansas. Born 27 May 1892 in Fairbury, Nebraska. Died 26 Dec 1973. They had three children.

He married, second, Marie Magdalene **Borky** on 19 Apr 1927. Born 21 Mar 1910. Died 17 Apr 1972. Divorced 17 Sep 1927.

He married, third, Billie Enid **Rodabaugh**, daughter of William Henry **Rodabaugh** and Lena Leota **Jordan**, on 2 Jan 1945 in Belleville, Kansas. Born 3 Nov 1917 in Osceola, Missouri. They had one child, the author of this text.

84 Ella Valena⁴ **Luther** (Arthur Franklin³, Henry Lousern², Ebenezer¹). Born 18 Aug 1896 in Mason City, Nebraska. Died 8 Jun 1972 in Portland, Oregon.

She married Earl **Gardiner**, son of Joseph Warren **Gardiner** and Hannah Farnham **Spencer**, on 29 Aug 1915, in Brewster, Nebraska. Born 14 July 1872. Died 8 Feb 1964. He appears to have been married three times, with children from all marriages. Ella was his second wife. Ella and Earl had three children.

85 Leon Alvin “Babe”⁴ **Luther** (Arthur Franklin³, Henry Lousern², Ebenezer¹). Born 12 Sep 1900 in Mason City, Nebraska. Died 25 Dec 1972 in Broken Bow, Nebraska.

He married, first, Alberta **Schlund**, daughter of Albert **Schlund** and Emma **Triggs** on 24 Apr 1923 in Council Bluffs, Pottawattamie, Iowa. They had two children.

He married, second, Ione **Gingles**, daughter of William **Gingles** and Emma Frances **Wright**, on 11 Sep 1927 in Washington, Kansas. Born 19 Aug 1904. Died 1 Dec 2006 in Broken Bow, Nebraska. They had one child.

86 Marvin Arthur⁴ **Luther** (Arthur Franklin³, Henry Lousern², Ebenezer¹). Born 11 Jun 1905 in Mason City, Nebraska. Died 26 Feb 1972 in Broken Bow, Nebraska.

He married Sadie Mae **Narragon**, daughter of William Sheridan **Narragon** and Blanche Cynthia **Draper**, on 27 Jun 1931 in Kearney, Nebraska. Born 26 Nov 1910. Died 7 Oct 1980 in Newport Beach, California. They had one child.

87 Patrick Anson⁴ **Luther** (Arthur Franklin³, Henry Lousern², Ebenezer¹). Born 30 Jan 1908 in Mason City, Nebraska. Died 21 Jan 1991 in Broken Bow, Nebraska.

He married Marie Olive **Commeree**, daughter of Prosper Valerian **Commeree** and Josephine **Courville**, on 15 Apr 1929 in Clay Center, Kansas. Born 19 Mar 1913 in Coyville, Kansas. Died 1 Aug 1989 in Broken Bow, Nebraska. They had three children.

88 Evangeline Mae⁴ **Luther** (Leon Ellsworth³, Henry Lousern², Ebenezer¹). Born 14 Sep 1904 in Omaha, Nebraska. Died 11 Nov 1973 in San Diego, California.

She married Edmund Frederick **Hald**, son of Gustave **Hald** and Anna Matousek **Hald**, on 19 Sep 1925 in Smith Center, Kansas. Born 15 Apr 1903 in St. Paul, Nebraska. Died 22 May 1965 in Grand Island, Nebraska. They had three children.

89 Dorothy Lucille⁴ **Luther** (Leon Ellsworth³, Henry Lousern², Ebenezer¹). Born 3 Dec 1906 in Omaha, Nebraska.

She married, first, Charles **Williams** on 14 Feb 1926 in Grand Island, Nebraska. They had one child.

She married, second, Mauritz **Bergquist** on 28 Aug 1930. They had one child.

She married, third, Lloyd Leon **Hicks** on 14 Feb 1935 in California. Born 26 Apr 1905 in Potter, Nebraska. Died 12 Apr 1938. They had one child.

She married, fourth, William **Johnson** on 7 Jul 1945 in California.

She married, fifth, Luther (John) **White**, the brother of the Wayne **White** who married her sister Grace Winnifred **Luther**.³⁹

90 Donald Elsworth⁴ **Luther** (Leon Ellsworth³, Henry Lousern², Ebenezer¹). Born 16 Mar 1912 in Omaha, Nebraska. Died 25 Jan 1981 in Grand Island, Nebraska.

He married Shirley **Starkey** on 8 Jul 1932 in Grand Island, Nebraska. Born 11 Mar 1911. Died 4 Jun 1981. They had two children.

91 Henry McQuade⁴ **Barclay** (Ida Alice³, Henry Lousern², Ebenezer¹). Born 12 Jul 1891 in Oelrichs, South Dakota. Died 27 Feb 1966.

³⁹ Fifth marriage reported by Lisa Geibel, Dorothy's granddaughter, correspondence in 2021.

He married Clara Barton **Moseley**, daughter of Henry Clay **Moseley** and Elizabeth Brisco **Ross** on 20 Sep 1915 in Versailles, Missouri. Born about 1899. Died 10 Dec 1980. They had eleven children.

92 Elsie Ellen⁴ **Barclay** (Ida Alice³, Henry Lousern², Ebenezer¹). Born 8 Oct 1903 in Blue Rapids, Kansas. Died May 1988.

She married Arlie Bee **Harris**, son of Jessie Green **Harris** and Ellen T. **Smith**, on 25 Sep 1926. Born about 1904. Died 1 May 1940. They had three children.

93 Ernest Lester⁴ **Barclay** (Ida Alice³, Henry Lousern², Ebenezer¹). Born 3 Feb 1905 in Blue Rapids, Kansas. Died 16 Jul 1979.

He married, first, Mamie Reba **Dehart**, daughter of Charles **Dehart** and Etha Viola **Toler**, on 5 Jan 1929, in Carlisle, Arkansas. Died 16 Jul 1979. They had two children.

He married, second, Kathryn Christine **James**, daughter of Arthur Berry **James** and Essie Jane **Gamel**, in 1942. Born 1 Sep 1925. Died 5 Jun 1998. They had two children.

94 Richard Howard⁴ **Barclay** (Ida Alice³, Henry Lousern², Ebenezer¹). Born 26 Mar 1909 in Blue Rapids, Kansas. Died 3 Sep 1994 in Lebanon, Missouri.

He married Anne Sudie Geneva **Richards**, daughter of John Tolliver **Richards** and Annie Dillard **McElroy**, on 16 Apr 1938. Born 21 Nov 1919. Died 2004. They had three children.

95 Elnora Mae⁴ **Barclay** (Ida Alice³, Henry Lousern², Ebenezer¹). Born 6 Oct 1910 in Blue Rapids, Kansas. Died 1996.

She married, first, Edgar **Morrison** on 1 Jan 1929 in Carlisle, Arkansas. They had one child.

She married, second, James Lester **Hudspeth**. Born 1 Jan 1911 in Broadview, Arkansas. Died 29 Dec 1979 in Little Rock, Arkansas. They had two children.

She married, third, Roy Oster **Cook**. Born 22 Sep 1913. Died 19 Nov 1962. They had three children.

96 Donald Robert⁴ **Barclay** (Ida Alice³, Henry Lousern², Ebenezer¹). Born 28 Aug 1912 in Blue Rapids, Kansas.

He married, first, Billie Jean **Workman** on 12 Jun 1945. Born 15 Aug 1927. Died 26 Feb 2007. They had two children.

He married, second, Margaret Louise **Queran**, daughter of Morris R. **Queran** and Clara L. **Hoepfner**, on 4 May 1973. Born 30 Sep 1916 in Lincoln, Nebraska. Died 18 Nov 2006.

97 Irene Elizabeth⁴ **Carpenter** (Cora Louisa³, Henry Lousern², Ebenezer¹). Born 25 Aug 1906 in Perkins, Oklahoma. Died 20 Feb 1970.

She married Emerson Edson **Hoffman** on 10 Nov 1926 in Holton, Kansas. Born 11 Aug 1907. Died 28 Sep 1972. They had four children.

98 Carl Melvin⁴ **Carpenter** (Cora Louisa³, Henry Lousern², Ebenezer¹). Born 26 Mar 1909 in Sabetha, Kansas.

He married Thelma Madge **Peck** on 17 Feb 1932 in Marysville, Kansas. Born 3 Apr 1914 in Sabetha, Kansas. Died 7 Jul 1987 in Pocatello, Idaho. They had four children.

99 Effie Lorena⁴ **Carpenter** (Cora Louisa³, Henry Lousern², Ebenezer¹). Born 25 Dec 1910 in Sabetha, Kansas. Died 8 Feb 2003 in Holton, Kansas.

She married Charles **Moody**, son of Stewart **Moody** and Martha **Summerland**, on 12 Jun 1929 in Oneida, Kansas. Born 4 Dec 1903 in Arlington, Kansas. Died 1 Aug 1985 in Holton, Kansas. They had two children.

100 Edgar William⁴ **Carpenter** (Cora Louisa³, Henry Lousern², Ebenezer¹). Born 6 May 1912 in Sabetha, Kansas. Died 11 Nov 1975.

He married Mary **Riley**, daughter of James Findley **Riley** and Florence Irene **Jewell**, on 24 Oct 1941 in Paris, Idaho. Born 6 Aug 1919 in Frederick, Colorado. Died 16 June 1996 in Twin Falls, Idaho. They had three children.

101 Orma Katherine⁴ **Carpenter** (Cora Louisa³, Henry Lousem², Ebenezer¹). Born 9 Aug 1913 in Sabetha, Kansas. Died 28 Aug 2005.

She married, first, Ernest Roosevelt **Williams**, son of Nona Ray **Williams** and Elsie **Furst**, on 6 Feb 1935 in Seneca, Kansas. Born 14 Aug 1904. Died 16 Dec 1974. They had one child.

She married, second, Duncan Raymond **McArthur** on 28 Jun 1981. Died 15 May 1990.

102 Freeda Fern⁴ **Calhoon** (Bertha Elizabeth³, Henry Lousem², Ebenezer¹). Born 7 Mar 1911 in Stapleton, Nebraska.

She married Albert Leon **Dreher** on 16 May 1936 in North Platte, Nebraska. Born 30 Jan 1903 in Germany. Died 18 Feb 1958 in Wichita, Kansas. They had four children.

103 Carrol Stanley⁴ **Calhoon** (Bertha Elizabeth³, Henry Lousem², Ebenezer¹). Born 2 Apr 1914 in Edmonton, Alberta, Canada. Died 1 Sep 1976 in Whittier, California.

He married Elma LaVern **McMichael**, daughter of Richard Clifford **McMichael** and Julia Anna **McCarl**, on 25 Dec 1933 in Cambridge, Nebraska. Born 21 Jan 1910 in Farnam, Nebraska. Died 20 May 1991 in Whittier, California. They had four children.

104 Carl Ulysses⁴ **McQuiety** (Katie Jane³, Henry Lousem², Ebenezer¹). Born 27 Jun 1909 in Belleville, Kansas. Died 10 Nov 1994 in Cambridge, Nebraska.

He married Elsie Olive **Teter**, daughter of Adam **Teter** and Emily Nancy **Davis**, on 15 Apr 1934 in Cambridge, Nebraska. Born 1 Aug 1914 in Cambridge, Nebraska. Died 23 May 2003 in Cambridge, Nebraska. They had two children.

105 Thelma Lucile⁴ **McQuiety** (Katie Jane³, Henry Lousem², Ebenezer¹). Born 1 Sep 1920. Died 14 Feb 2013 in Phillipsburg, Missouri. Fostered by parents from the age of 9.

She married Robert Rudolph **Doing**, son of John Ole **Doing** and Amelia Isabelle **Runge**, on 11 Oct 1940. Born 15 Feb 1917 in Phillipsburg, Missouri. Died 30 Jul 2011 in Phillipsburg, Missouri. They had one child.

106 Linnie Elaine⁴ **Luther** (William Walter³, Henry Lousearn², Ebenezer¹). Born 29 Nov 1913 in Johnstown, Nebraska. Died 12 Jan 1998 in Thermopolis, Hot Springs, Wyoming.

She married, first, Frank J. **Isaac**, son of Franklin Noah **Isaac** and Cora E. **Glass**, on 28 Nov 1933 in Alliance, Nebraska. Divorce before 1947. Born 21 (or 31) Oct 1913 in Darbyville, Iowa. Died 2 Nov 1991 in Hot Springs, South Dakota. They had one child.

She married, second, Ross Harold **Burkhart**, son of William Thomas **Burkhart** and Nellie Blanche **Campbell**, in 1940 in Keith, Nebraska. Born 27 Dec 1914. Died 11 Feb 1963. They had two children.

She married, third, Walter Waldo **Slankard**, son of Harvey William **Slankard** and Grace May **Walter**, before 1950. Divorced 9 Mar 1972. Born 4 Oct 1918 in Brownfield, Pope County, Illinois. Died 1 Jan 1992 in Thermopolis, Hot Springs, South Dakota.

She married, fourth, Kenneth **Siems**, son of Fred Henry **Siems** and Edna Lee **Burt**, on 25 May 1994 in Elko, Nevada. Born 30 Oct 1918. Died 15 Jan 1999.

107 Ruby Arlene⁴ **Luther** (William Walter³, Henry Lousearn², Ebenezer¹). Born 3 Jan 1916 in Minburn, Alberta, Canada. Died 16 Sep 1993 in Scottsbluff, Nebraska.

She married, first, Edward Earl **Goodrich**, son of Earl C. **Goodrich** and Pearl **Butler**, on 11 Jul 1935 in Broken Bow, Nebraska. Born 27 Oct 1913. Died 20 Jan 1996.

She married, second, Harold Albert **Todd**, son of Albert Fletcher **Todd** and Eva Geneva **Boswell**, after 1938. Born 3 Jan 1912 in Missouri. Died 17 Feb 1988 in Scottsbluff, Nebraska. They had three children.

She married, third, Robert Richard **Nickell**, son of Robert Richard **Nickell** and Golda E. **Jessee**, on 18 Nov 1968, in Multnomah, Oregon.

108 Omer Laton⁴ **Luther** (William Walter³, Henry Lousearn², Ebenezer¹). Born 6 Jul 1920 in Mason City, Nebraska. Died 2 Apr 1993.

He married Dorothy Louise **Thomas**, daughter of Byrd Walter **Thomas** and Hallie Lucinda **Herring**, on 5 Sep 1941 in Bellingham, Washington. Divorced 22 Oct 1969. They had one child.

109 Tutcie Dorris (Doris)⁴ **Luther** (William Walter³, Henry Lousern², Ebenezer¹). Born 19 Jun 1928 in Dunning, Nebraska. Died 15 Aug 2014.

She married, first, Lewis John **Herstead**, son of John Christian **Herstead** and Helen Josephine **Osborn** on 15 Jul 1948 in Scottsbluff, Nebraska. Born 29 May 1925 in Scottsbluff, Nebraska. Died 17 Nov 2003 in Mitchell, Nebraska. They had five children.

110 William Franklin⁴ **Luther** (Virginia³, James², Ebenezer¹), aka Frank Luther. Born 4 Dec 1890 in Nebraska. Died 7 Sep 1938 in Phoenix, Maricopa County, Arizona.

He married Margarette Catherine **King**, daughter of William Alexander **King** and Zobeida **Harrison**. Born 18 Oct 1891 in Clinton, Missouri. Died 9 Mar 1977 in New Braunfels, Comal County, Texas. They had three children.

111 Henry Olan⁴ **Luther** (Virginia³, James², Ebenezer¹), aka Olen Luther. Born 16 Oct 1901.⁴⁰ Died 28 Nov 1934.

He married Zelphia Myrtle **Marlar**, daughter of George Washington **Marlar** and Mollie Ann **McMeans**, on 16 Apr 1927. They had one child.

112 Elsie Mae⁴ **Brown** (Franklin Walter³, Mary Ann², Ebenezer¹). Born 10 Oct 1888 in Saline County, Nebraska. Died 11 Nov 1985.

She married Truman **Kerr**, son of James William **Kerr** and Lydia Ann **Carr**, on 3 Aug 1907. Born 8 Jan 1884 in Willis, Kansas. Died 29 Sep 1964. They had five children.

113 Elva Lula⁴ **Brown** (Franklin Walter³, Mary Ann², Ebenezer¹). Born 16 Jul 1891 in Saline County, Nebraska. Died 1 Dec 1980 in Manhattan, Kansas.

She married Ray Sinclair **Wilkins**, son of Thomas Henry **Wilkins** and Adelaide Victoria **Huntley**, on 5 Jul 1911 in Sabetha, Kansas. Born 1 Jan 1889 in Seneca, Kansas. Died 30 May 1944 in Sabetha, Kansas. They had two children.

⁴⁰ Henry Olen married Zelpha Myrtle Marlar and had one son, George Washington Luther, who provided information on his grandmother Virginia. Henry Olen Luther's birth year taken from his gravestone in Claremore, Oklahoma, but George indicated 1900.

114 Elmer Orlando⁴ **Brown** (Franklin Walter³, Mary Ann², Ebenezer¹). Born 5 Apr 1893 in Western, Saline County, Nebraska. Died 24 Dec 1952 in Sabetha, Kansas.

He married Glen Gladys **Meisner**, daughter of Thomas Jefferson **Meisner** and Minnie Margaret **Baehni**, in 1919. Born 14 Oct 1897 in Sabetha, Kansas. Died 7 Jan 1975 in Kansas City, Kansas. They had three children.

115 Leroy⁴ **James** (William Ellworth³, Hannah², Ebenezer¹). Born 6 Jul 1888 in Saline County, Nebraska. Died 25 Aug 1960 in Biloxi, Harrison County, Mississippi.

He married Agnes Theresa **Cordes**, daughter of Louis Charles **Cordes** and Catherine **Hornberger**, on 22 Aug 1916 in New Orleans, Louisiana. Born Feb 1896 in Louisiana. Died 20 May 1952. They had no children.

116 Herbert Carlyle “Lyle”⁴ **James** (Herbert Byron³, Hannah², Ebenezer¹). Born 5 May 1891 in Nebraska. Died 4 Jul 1964 in Burlington, Kit Carson County, Colorado.

He married Blanche Belle **Nealley**, daughter of Charles T. **Nealley** and Lizzie Agnue **Paull**. Born 16 Feb 1895 in Burlington, Colorado. Died 30 Nov 1982 in Burlington, Kit Carson County, Colorado. They had five children.

117 Bessie Lorena⁴ **James** (Herbert Byron³, Hannah², Ebenezer¹). Born 12 Jan 1893 in Nebraska. Died Nov 1977 in Burlington, Kit Carson, Colorado.

She married Amil Reinholdt **Anderson**, son of Peter **Anderson** and Emma Cristina **Abrahamson**, on 28 May 1911. Born 11 Dec 1888 in Cheyenne County, Kansas. Died 2 Oct 1931 in Sherman County, Kansas. They had one child.

118 Harold Victor⁴ **James** (Herbert Byron³, Hannah², Ebenezer¹). Born 10 Jul 1895 in Kansas. Died 22 Aug 1984 in Denver, Colorado.

He married Dorothy Mae **Nohr**, daughter of John J. **Nohr** and Sarah “Sadie” Ward **Parker**, on 31 Aug 1918 in Yuma, Colorado. Born 26 Feb 1900 in Nebraska. Died 30 Jun 1989 in Englewood, Arapahoe County, Colorado. They had four children.

119 Jesse Byron⁴ **James** (Herbert Byron³, Hannah², Ebenezer¹). Born 16 Feb 1898 in Sherman County, Kansas. Died 24 Feb 1964 in Denver, Colorado.

He married Clara Frances **Rhoades**, daughter of James Edward **Rhoades** and Eva Myrtle **Irvin**, on 29 Oct 1922 in Burlington, Kit Carson County, Colorado. Born 5 Oct 1902 in McCracken, Rush County, Kansas. Died 18 Oct 2002 in Naples, Collier County, Florida. They had three children.

120 William Earl⁴ **James** (Herbert Byron³, Hannah², Ebenezer¹). Born 15 Feb 1901 in Kansas. Died 9 Jun 1979 in Littleton, Arapahoe County, Colorado.

He married Josephine Una **Nohr**, daughter of John J. **Nohr** and Sarah “Sadie” Ward **Parker**, on 10 Aug 1932 in Burlington, Kit Carson County, Colorado. Born 2 Mar 1910 in Colorado. Died 16 May 1990 in Littleton, Arapahoe County, Colorado. They had three children.

121 Howell Marlowe⁴ **James** (Herbert Byron³, Hannah², Ebenezer¹). Born about 1904 in Kansas. Died 24 Jun 1961 in Denver, Colorado.

He married Theresa E. **Burd**, daughter of Adrian Columbus **Burd** and Emma Belle **Elliott**, on 8 Feb 1928. Born about 1908 in Colorado. Died 1999 in Littleton, Arapahoe County, Colorado. They had three children.

122 Lowell Stanford⁴ **James** (Herbert Byron³, Hannah², Ebenezer¹). Born 12 Oct 1906 in Kansas. Died 16 Aug 1936 in Sherman, Kansas.

He married LaVeda Mae **Goatley**, daughter of William Jesse **Goatley** and Emma May **Miller**, on 30 Jun 1928 in Cheyenne Wells, Cheyenne County, Colorado. Born 12 Mar 1910 in Burwell, Nebraska. Died 24 Apr 1982 in Fallon, Churchill, Nevada. They had five children.

123 Delph Leland⁴ **James** (Herbert Byron³, Hannah², Ebenezer¹). Born 2 May 1909 in Kansas. Died 17 Apr 1977 in Littleton, Arapahoe County, Colorado.

He married Hilda Sophia **Karspeck**, daughter of Heinrich (Henry) Fredrick **Karspeck** and Elizabeth “Lizzie” Margarethe **Rabe**. Born 18 Jul 1909 in Syracuse, Otoe County,

Nebraska. Died 12 Feb 2005 in Littleton, Arapahoe County, Colorado. They had three children.

124 Erma M.⁴ **Norris** (Letitia A.³, Hannah², Ebenezer¹). Born 15 Sep 1888 in Western, Saline County, Nebraska. Died 3 May 1920 in North Loup, Valley County, Nebraska.

She married Royal Edman **Snodgrass**, son of Zachary Taylor **Snodgrass** and Sarah Ellen **Rappe**, on 2 Oct 1912. Born 5 Mar 1888 in Seward, Seward County, Nebraska. Died 3 May 1949 in Waverly, Bremer County, Iowa. They had no children.

125 Glendon William⁴ **Norris** (Letitia A.³, Hannah², Ebenezer¹). Born 18 Jun 1901 in Beaver Crossing, Seward County, Nebraska. Died 5 Nov 1981 in Englewood, Arapahoe County, Colorado.

He married Gladys Marie **Knudson**, daughter of Oscar **Knudson** and Lucy **Bradley**, on 3 Apr 1924 in University Place, Lancaster County, Nebraska. Born 26 Sep 1902 in Goehner, Seward County, Nebraska. Died 19 Mar 1983 in Tempe, Maricopa County, Arizona. They had three children.

126 Rhoda Arilla **Wattels**⁴ (Minnie Bell³, Hannah², Ebenezer¹). Born 1 Apr 1897 in Saline County, Nebraska. Died 21 Feb 1987 in Seward, Seward County, Nebraska.

She married Clarence L **Harris**, son of Joas Alfred **Harris** and Catherine “Katie” **Schweitzer**, on 4 Mar 1918 in Beaver Crossing, Seward County, Nebraska. Born 18 Sep 1888 in Holt County, Nebraska. Died 12 Sep 1946 in Lincoln, Nebraska. They had one child.

127 Ethel Irene **Wattels**⁴ (Minnie Bell³, Hannah², Ebenezer¹). Born 18 Feb 1907 in Beaver Crossing, Seward County, Nebraska. Died 7 Apr 1987 in Beaver Crossing, Seward County, Nebraska.

She married Elton Wesley **Rohren**, son of William John **Rohren** and Florence Mary **Boals**, on 3 Dec 1927 in Fillmore County, Nebraska. Born 7 Aug 1907 in Staplehurst, Seward County, Nebraska. Died 6 Aug 1982. They had four children.

128 Edna Pauline **Wattels**⁴ (Minnie Bell³, Hannah², Ebenezer¹). Born 23 Nov 1915 in Beaver Crossing, Seward County, Nebraska. Died 28 Aug 2004 in Anchorage, Alaska.

She married Theodore Henry “Ted” **Ihde**, son of August William **Ihde** and Mahele Wilhelmine Anna “Minnie” **Borgmann**, on 17 Jun 1936 in Seward, Nebraska. Born 29 Apr 1916 in Pleasant Dale, Seward County, Nebraska. Died 20 Nov 1993 in Anchorage, Alaska. They had one child.